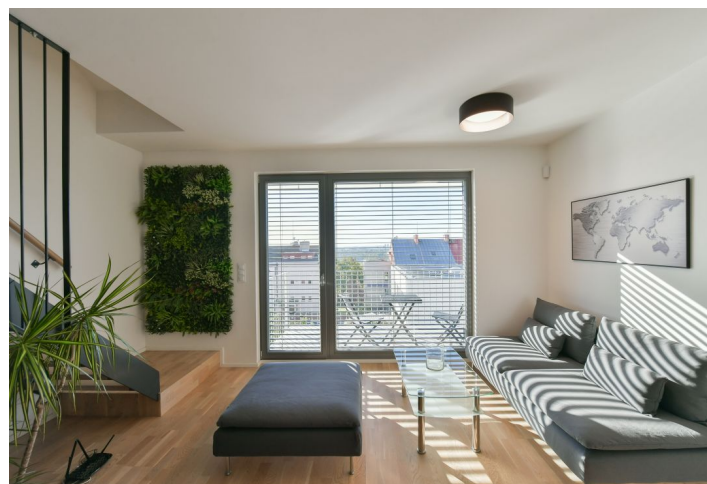




## Apartment Two-bedroom (3+kk)

76 m², Prague 6, Břevnov, Bělohorská

Rented





## Apartment Two-bedroom (3+kk)

**Rented**

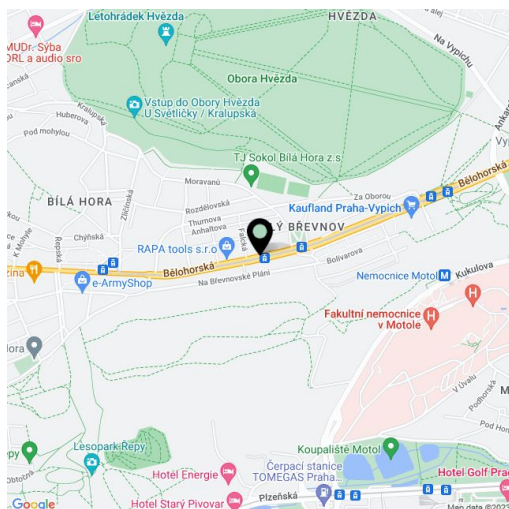
76 m², Prague 6, Břevnov, Bělohorská

|                  |                 |
|------------------|-----------------|
| Total area       | 87 m²           |
| Floor area*      | 76 m²           |
| Terrace          | 11 m²           |
| Parking          | Garage parking. |
| Garage           | Yes             |
| Cellar           | Yes             |
| PENB             | G               |
| Reference number | 44008           |
| Available from   | Immediately     |

This brand new furnished 2-bedroom 2-bathroom split-level apartment with a south-facing terrace is on the second floor in a new residence complete with underground parking, on the border of Břevnov and Bílá Hora neighborhoods. Located in a residential area near the large Hvězda and Ladronka Parks, with a kindergarten, elementary school, and a supermarket near by. Easy accessibility to the city center and the Václav Havel Airport Prague by car and public transport, with a tram stop just a few steps from the building.

The lower level of the apartment includes a living room with a fully fitted open plan kitchen and a south-facing **terrace** providing far-reaching views, a bedroom with built-in wardrobes and access to the terrace, a bathroom (walk-in shower, toilet), and an entrance hall with built-in wardrobes. The upper floor features a second bedroom with a **walk-in closet** and built-in wardrobes, plus a bathroom (bathtub, toilet).

**Air-conditioning**, wooden floating floors, tiles, automatic blinds, awning, central heating, washer, dryer, Siemens kitchen appliances, dishwasher, induction cooktop, microwave oven, coffee maker, wine fridge, garden furniture, video entry phone, alarm, **cellar**, elevator. A **garage parking** space is included. Monthly deposit for service charges, water, heating, and garage parking maintenance CZK 5,510. Electricity is billed separately.



\* Area of the unit according to the Civil Code. The area consists of the sum total area of the entire unit bounded by perimeter walls.