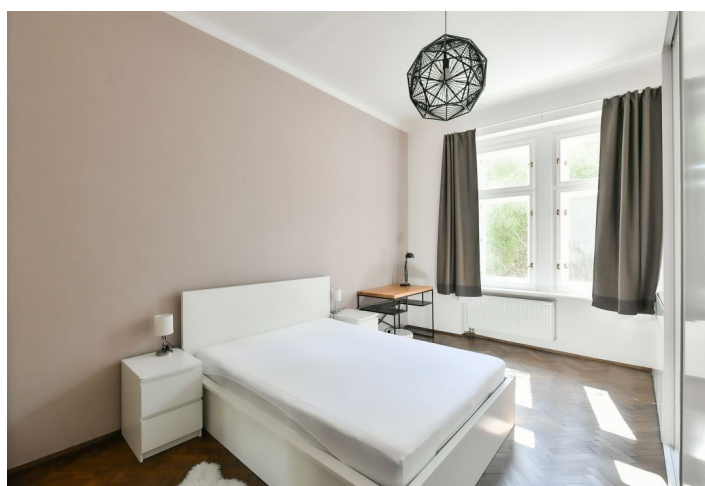
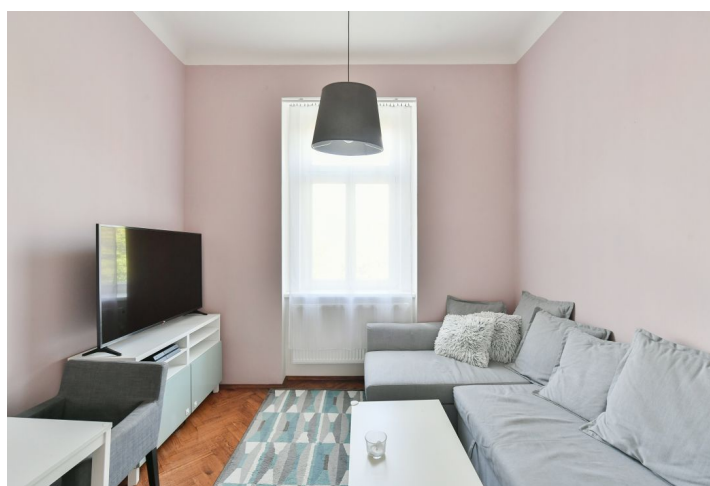
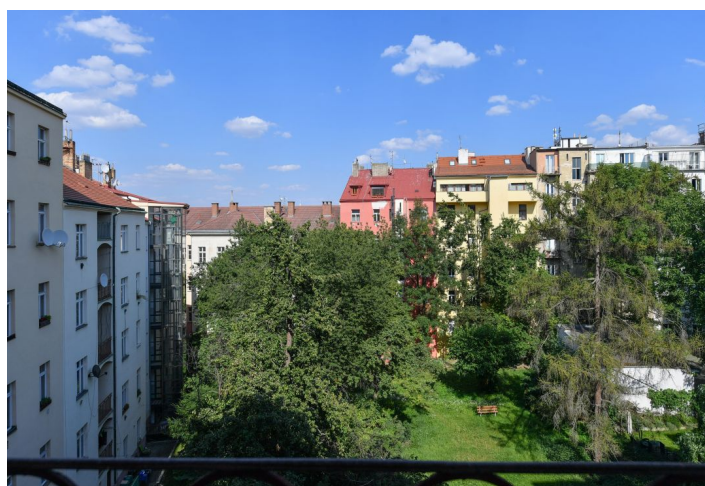




## Apartment One-bedroom (2+kk)

Sold

47.5 m², Prague 5, Smíchov, Zoubkova





## Apartment One-bedroom (2+kk)

**Sold**

47.5 m², Prague 5, Smíchov, Zoubkova

Total area	48 m²
Parking	-
Cellar	Yes
PENB	G
Reference number	43857

This fully furnished classic apartment with high ceilings, double doors, and casement windows overlooking the greenery is located on the 2nd floor of a nicely decorated apartment building without an elevator. The building is located on a quiet one-way street between parks, yet only a few steps from Smíchov's Anděl pedestrian zone and the new Smíchov City district.

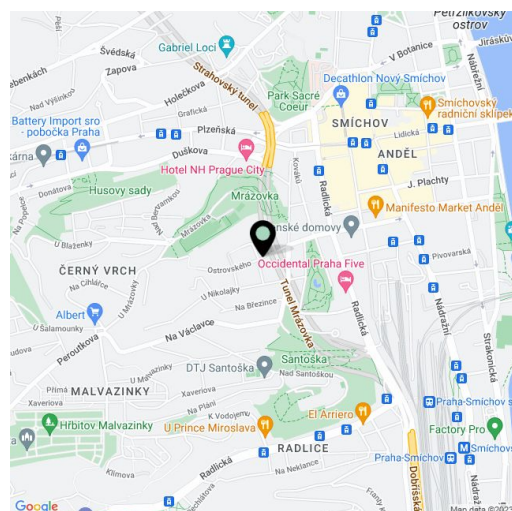
The functional layout consists of a living room with a kitchen and dining area, a spacious bedroom, a bathroom (bathtub, sink, washing machine), a separate toilet, a closet, and an entrance hall. The bedroom window faces west towards a quiet **street lined with trees**, and the living room towards a **green courtyard**.

The apartment has been renovated (in 2012 and 2018). There are **parquet floors** in both rooms and laminate flooring in a wood decor in the hall. The kitchen is fully equipped with built-in appliances (induction hob, electric and microwave oven, refrigerator, dishwasher). The interior features **plenty of storage space** (built-in wardrobes, storage in the hall, shoe rack, wall-mounted hanger), and the apartment also has a **large cellar storage unit** (approx. 6 sq. m.). Owners can also use the mezzanine **balcony** shared with the neighboring apartment. The entrance door is a security one, and heating and hot water are provided by an electric boiler.

An ideal location near the city center, in a place with plenty of greenery, close to cafes, restaurants, shopping and entertainment centers, as well as smaller shops, a post office, a pharmacy, and **Mrázovka Park** or **Na Santošce Orchards**. A metro station, a tram stop, and a bus terminal are about a 5-minute walk away.

Interior 47.5 m².

In addition to regular property viewings, we also offer real-time video viewings via WhatsApp, FaceTime, Messenger, Skype, and other apps.



\* Area of the unit according to the Civil Code. The area consists of the sum total area of the entire unit bounded by perimeter walls.