



Apartment One-bedroom (2+kk)

€ 363 747 | CZK 8 990 000

47.8 m², Prague 6, Břevnov, Šlikova



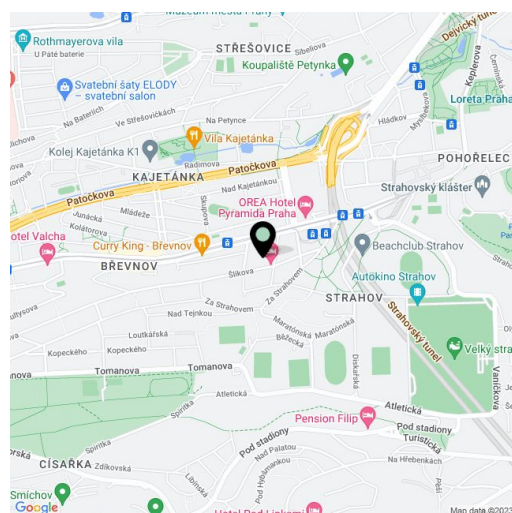


Apartment One-bedroom (2+kk)

€ 363 747 | CZK 8 990 000

47.8 m², Prague 6, Břevnov, Šlikova

Total area	52 m²
Floor area*	48 m²
Terrace	4 m²
Parking	-
Cellar	-
PENB	E
Reference number	43804



* Area of the unit according to the Civil Code. The area consists of the sum total area of the entire unit bounded by perimeter walls.

We exclusively offer for sale this elegant, airy, high-standard apartment that is part of the Šlikova 16 boutique residence, an apartment building from the beginning of the 20th century that is currently being completely reconstructed. It is located on a side street in a beautiful part of Prague 6 in Břevnov, in the immediate vicinity of the Tejnka historical monument zone and within walking distance of Prague Castle or Petřín Hill.

The area of the apartment on the 2nd floor consists of a living room with a preparation for a kitchen, a bedroom, a bathroom (with a bathtub and toilet), and a foyer. The living room has access to the **terrace** facing a **quiet courtyard**.

The **high-standard** facilities include herringbone pattern **oak parquet floors**, designer **WOW hexagon tiles**, brand-name sanitary ware, security wooden panel entrance doors, double-wing panel interior doors to the living room, and full rebateless doors to the bedroom and bathroom, all with **brass handles** and **magnetic locks**. Windows are wooden with insulated triple-glazed panes, and the surface of the terrace is made of **larch wood**. The building with elegant common areas has a modern elevator and a **refurbished stone staircase**, while a video intercom contributes to comfort and safety.

This great location in Prague 6 is easily accessible by public transport and by car. There are plenty of cafes and restaurants, a supermarket and farm produce shops are in the immediate vicinity, and numerous sports fields are within easy reach. **Ladronka Park**, **Velká Strahovská Garden**, the **Petřín Gardens**, or the **Hvězda game reserve** are all nearby. The ride to the city center takes about 15 minutes by tram from the nearby stop, it's possible to reach the Hradčanská metro station in less than 10 minutes, and you can quickly reach the airport by car as well as drive through a tunnel complex or exit the metropolis via the Prague Ring Road.

Floor area 47.8 m², terrace 3.8 m².

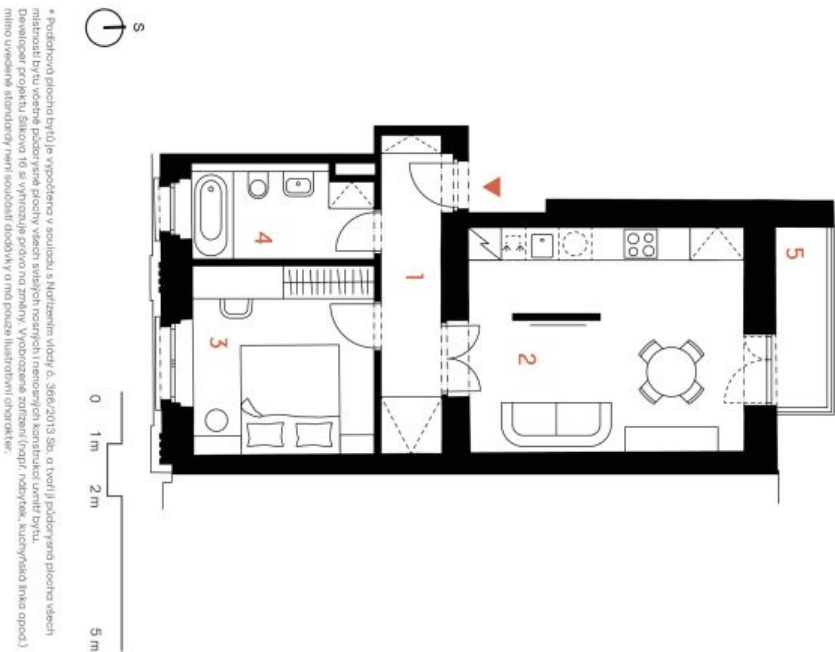
For more information, please visit the project website www.slikova16.cz.



Apartment One-bedroom (2+kk)

€ 363 747 | CZK 8 990 000

47.8 m², Prague 6, Břevnov, Šlikova



ŠLIKOVA 16

Byt č. 6
2+kk | 2. NP

1	Chodba	6,6 m²
2	Obývací pokoj s kuchyní	21,7 m²
3	Pokoje	11,3 m²
4	Koupelna s WC	5,5 m²

Užitná plocha
Podlahová plocha*
45,1 m²
47,8 m²

5 Terasa
3,8 m²

Celková plocha
51,6 m²

EXKLUZIVNÍ ZASTOUPENÍ
svoboda&williams | CHRISTIE'S
INTERNATIONAL REAL ESTATE

Na Zlatéce 1, 160 00, Praha 6
+420 724 551 238
silikova16.cz info@silikova16.cz