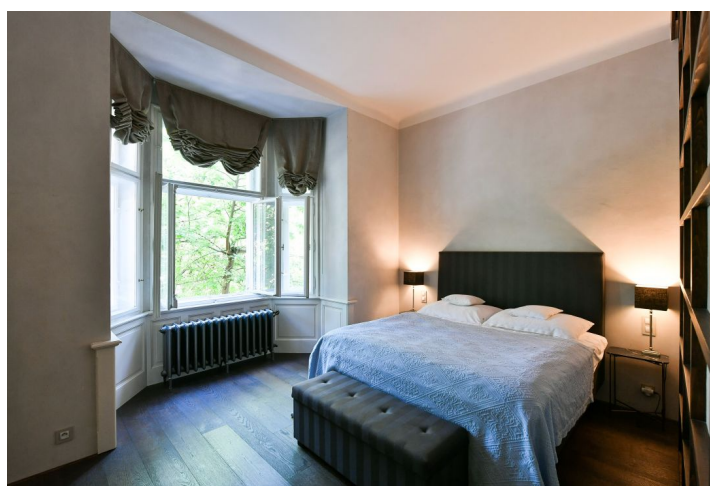
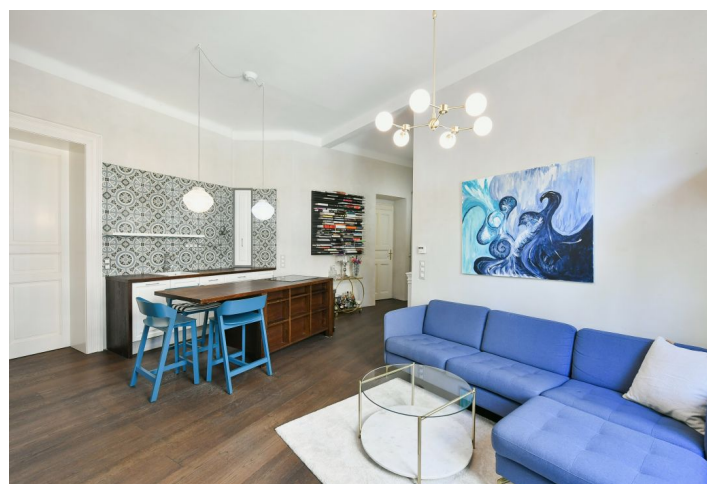
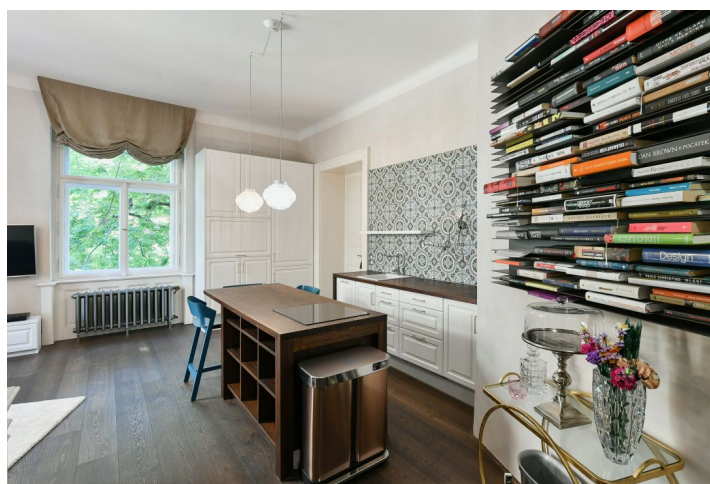




Apartment Two-bedroom (3+kk)

78 m², Prague 2, Vinohrady, Na Kozačce

Rented





Apartment Two-bedroom (3+kk)

Rented

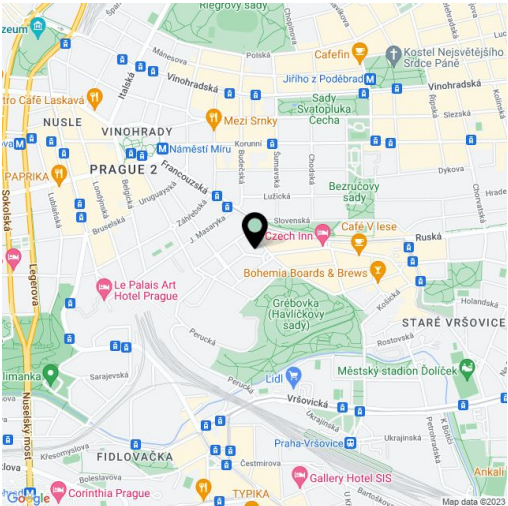
78 m², Prague 2, Vinohrady, Na Kozačce

Total area	78 m²
Parking	-
Cellar	-
Service price	Monthly deposit for common building charges and water: CZK 2,500. Gas and electricity are billed separately.
PENB	E
Reference number	43371
Available from	Immediately

Benefiting from close proximity to the wonderful Havlíčkovy Sady Park (just a block away), this fully furnished apartment is on the first floor of a renovated residential building with an elevator. Nicely located on a quiet street in a highly sought-after Vinohrady residential neighborhood, with very quick connections to the city center and amenities. Conveniently located for the **Náměstí Míru metro station (line A)**, and multiple tram lines.

The interior includes a living room with a fully fitted open plan kitchen and a dining area, a master bedroom with a fitted **walk-in closet**, a second bedroom (or a study), a bathroom with a bathtub and toilet, and an entrance hall.

Preserved original details, **hardwood floors**, tiles, high ceilings (3.6 m), large refurbished casement windows and wooden paneling, gas boiler, heated bathroom floor, washing machine, dryer, dishwasher, induction cooktop, TV, bike storage in the building.



* Size of the unit according to the Housing Act.
The area consists of the sum total of the internal area of every room.