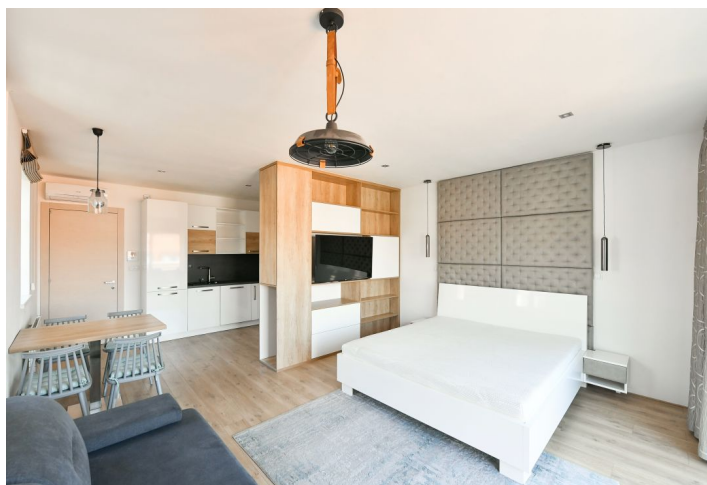




## Apartment Studio (1+kk)

38 m², Prague 1, Nové Město, Jungmannova

Rented





# Apartment Studio (1+kk)

Rented

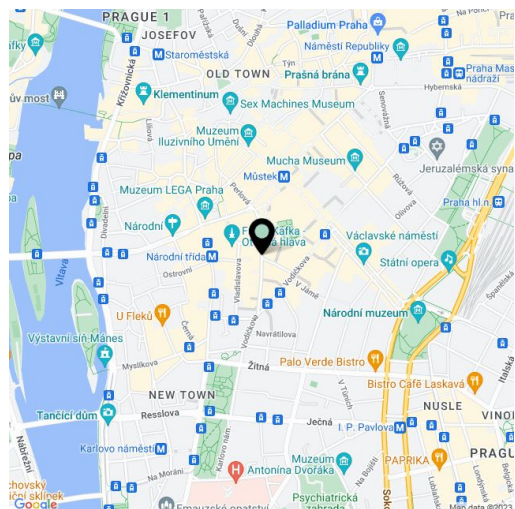
38 m², Prague 1, Nové Město, Jungmannova

Total area	46 m²
Floor area*	38 m²
Terrace	9 m²
Parking	-
Cellar	6 m²
Service price	Monthly deposit for services, water, and heating: CZK 5,000. Electricity will be transferred to the tenant.
PENB	G
Reference number	42932
Available from	Immediately

Benefiting from a prime central location, this modern air-conditioned studio apartment with a terrace is situated on the 6th topmost floor of a well-maintained historic building with an elevator. Located in the financial and commercial center of Prague, moments from the Quadrio shopping mall, with excellent access by public transport. The Národní třída metro station (line B) and tram line hub, as well as the Můstek metro station (lines A, B) are just a few steps away, and a wide range of amenities and services is available in the immediate vicinity. Quiet despite the central location.

The apartment includes a living room/bedroom with a fully fitted open plan kitchen, dining area, and access to the **terrace**, a shower bathroom with a toilet, and an entrance hall.

**Hardwood floors**, tiles, floor-to-ceiling windows, automatic exterior blinds, central heating, awning, washing machine, dishwasher, induction cooktop, TV, video entry phone, **6 m² storage room**.



\* Size of the unit according to the Housing Act.

The area consists of the sum total of the internal area of every room.