



Apartment One-bedroom (2+kk)

80 m², Brno, Brno - střed, Štefánikova

Sold





Apartment One-bedroom (2+kk)

Sold

80 m², Brno, Brno - střed, Štefánikova

| | |
|------------------|-------|
| Total area | 80 m² |
| Parking | - |
| Cellar | Yes |
| PENB | G |
| Reference number | 41988 |

This new stylish apartment is on the 2nd floor of a residential palace built in the 19th century in the spirit of late Historicism in a prestigious location near Lužánky Park by the important Austrian architect Josef Nebehosteny, co-author of the Mahen Theater. Due to the high demand for rental apartments in this location, the unit is suitable as an investment.

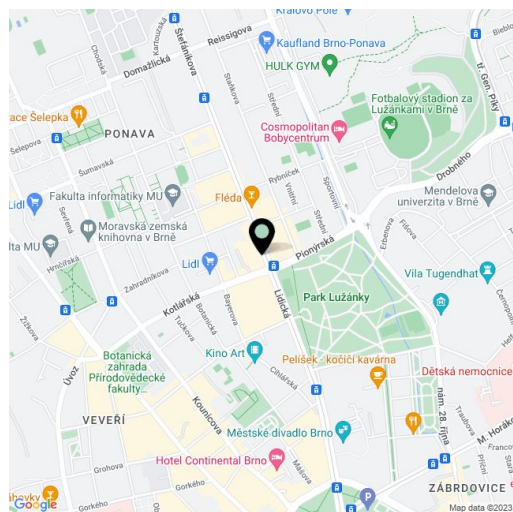
The attic apartment facing the **courtyard** consists of a living room with a preparation for a kitchen, a bedroom, a **gallery accessible from the living area and bedroom**, a bathroom, a separate toilet, and a hallway.

The **quality facilities** include multi-layer **wooden floors**, hardwood oak moldings, Dakea skylights, fireproof doors, paneled interior doors, **underfloor heating** in the bathroom, large-format tiles by **Story of Stone**, a Connet air sink on an **oak wood counter**, a wall-mounted toilet with an AquaBlade system and SoftClose seat, a data socket, or an EPS sensor. District heating from a heating plant; hot water by a boiler. The unit comes with a **cellar storage unit**, and you can rent a **parking space** located behind the building. There is no elevator.

The building is located in a sought-after part in the Veverí district, right next to a public transport stop from where you can get to the city center in a short time, and all of Brno's **university faculties** are within a short trolley bus ride. The building is located right by the entrance to the **nicely landscaped Lužánky Park** with a wide range of **sports activities**, and the world-famous **Villa Tugendhat** is also within walking distance. The district boasts many important architectural monuments and offers complete civic amenities.

Total usable area 79.7 m², of which floor area 56 m², gallery 23.7 m².

Due to the current situation, the investor reserves the right to make minor adjustments to the standards.



* Area of the unit according to the Civil Code. The area consists of the sum total area of the entire unit bounded by perimeter walls.



Apartment One-bedroom (2+kk)

80 m², Brno, Brno - střed, Štefánikova

Sold

Byt 2+kk

Jednotka č. 836/12

ŠTEFÁNIKOVÁ 1

| | | |
|---|-----------------|---------|
| 1 | Pokoј | 17,6 m² |
| 2 | Obytná místnost | 24,4 m² |
| 3 | WC | 2,2 m² |
| 4 | Vstup | 6,3 m² |
| 5 | Koupelna | 5,5 m² |
| 6 | Galerie | 23,7 m² |

Podlahová plocha dle OZ

56,0 m²

Plocha Galerie

23,7 m²

Celková užitná plocha

79,7 m²

Sklep č.002

4,6 m²

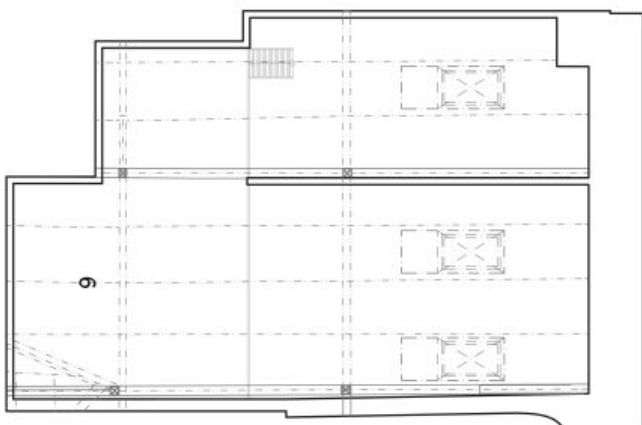
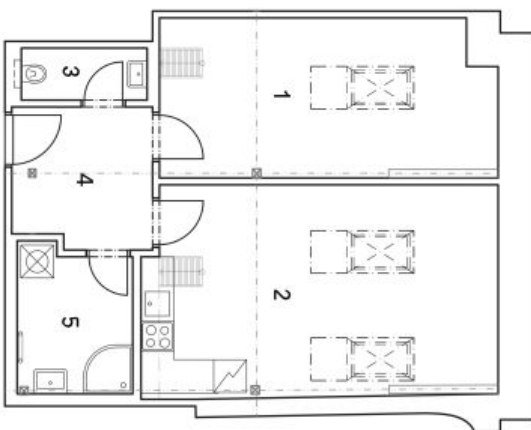
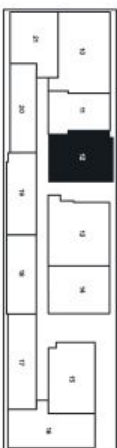


Schéma půdorysu domu představuje dispoziční řešení jednotky. Kuchyňská linka a nábytek nejsou součástí dodávky domu, zařízení je zobrazováno pouze pro názornost. Veškeré materiály a informace jsou pouze orientační. Developer si vyhrazuje právo na změny a upřesnění.

svoboda&williams | CHRISTIE'S
INTERNATIONAL REAL ESTATEREALDATA