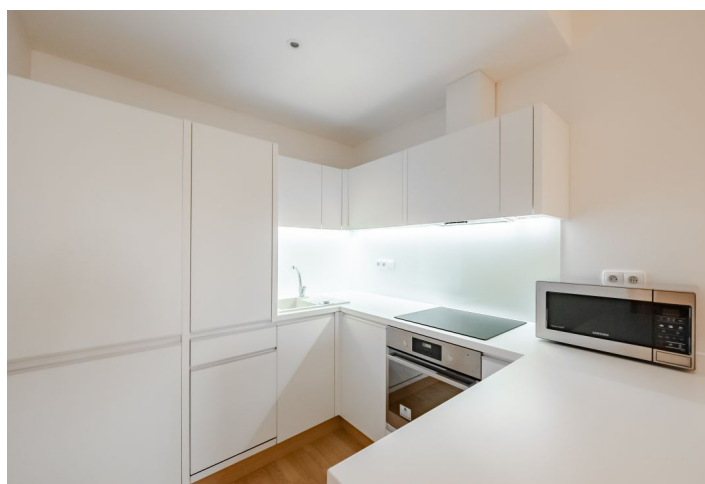




Apartment One-bedroom (2+kk)

Sold

46 m², Prague 4, Kamýk, U Kamýku





Apartment One-bedroom (2+kk)

Sold46 m², Prague 4, Kamýk, U Kamýku

| | |
|------------------|---|
| Total area | 46 m ² |
| Parking | outdoor parking space included in the price |
| Cellar | Yes |
| Service price | 2 977 CZK monthly |
| PENB | C |
| Reference number | 40975 |

This southeast-facing furnished apartment is in a modern building with an elevator located in a district with a complete range of services and good public transport access, close to large forest parks and the Lhotka biotope.

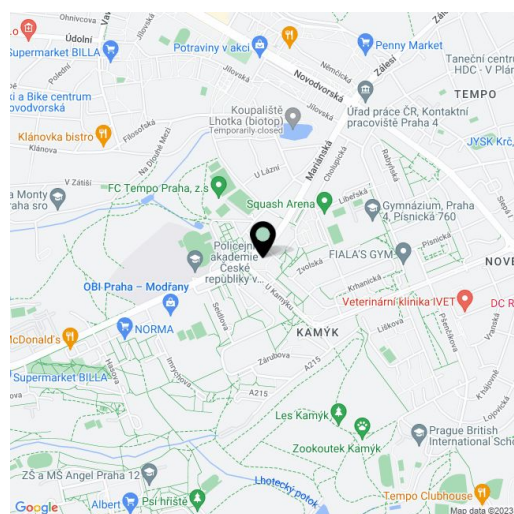
The current layout of the original studio unit situated on the 5th floor offers a living room with a kitchen, a bedroom with a **walk-in closet**, a hallway, and a bathroom (with a bathtub, toilet, sink, heated towel rail, and a connection for a washing machine).

The residential project designed by architect Ivan Hnizdil was completed in 2012. Facilities include a vinyl floor in wood decor, tiles, plastic windows with interior blinds and a complete kitchen, including a **dishwasher**. Central heating. The purchase price includes an **outdoor parking space**, a **cellar**, and the interior equipment shown in the photographs.

There is a supermarket right in front of the building, and a drugstore, hobby market, health center with a pharmacy, tennis courts and football club are nearby. The neighborhood is surrounded on both sides by green areas, on one side by the Lhotka and Hodkovičky **forest parks** and on the other by the **Kamýk oak forest**, through which you can walk or cycle to the **Modřanská Ravine**. Numerous bus connections will take you to the Kačerov or Smíchovské nádraží metro stations as well as to the Modřany Railway Station; public transport accessibility will be even better after the completion of the D metro line.

Floor area 45.75 m², cellar 3.28 m².

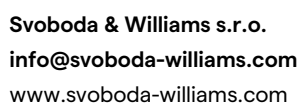
In addition to regular property viewings, we also offer real-time video viewings via WhatsApp, FaceTime, Messenger, Skype, and other apps.



* Area of the unit according to the Civil Code. The area consists of the sum total area of the entire unit bounded by perimeter walls.

Sold

46 m², Prague 4, Kamýk, U Kamýku



Prague
+420 257 328 281
+420 724 551 238

Brno
+420 543 250 711
+420 724 551 238

Bratislava
+421 948 939 938

PDF created
07. 05. 2024, 22:41