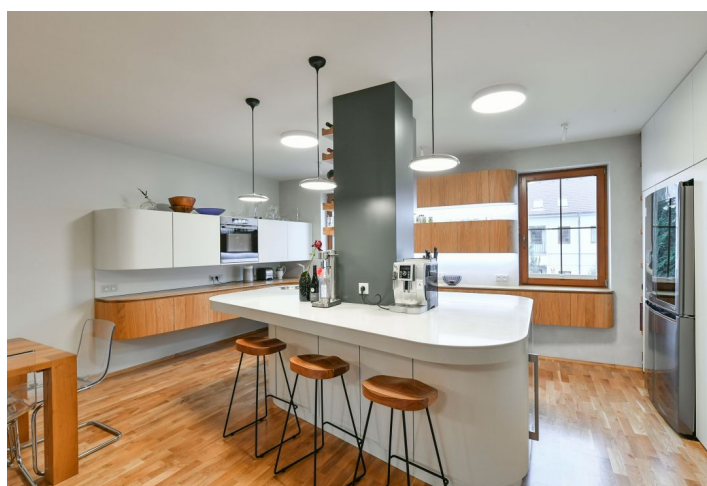




Apartment Four-bedroom (5+kk)

Rented

156 m², Prague 6, Liboc, Libocká





Apartment Four-bedroom (5+kk)

Rented

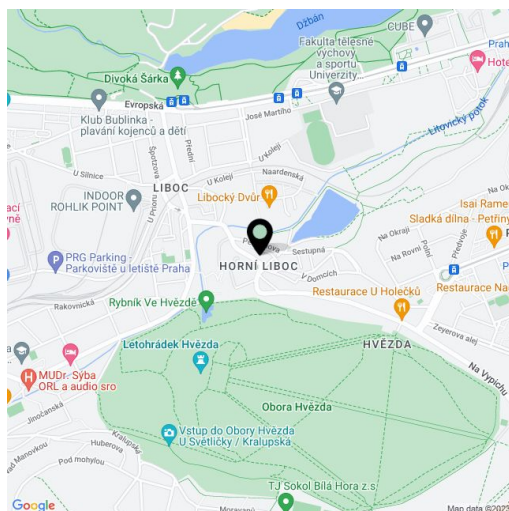
156 m², Prague 6, Liboc, Libocká

Total area	167 m²
Floor area*	156 m²
Terrace	11 m²
Parking	Garage and two courtyard parking spaces.
Garage	Yes
Cellar	Yes
Service price	Service charges are included in the rent. Deposit for water, gas, and electricity CZK 7,100/month.
PENB	G
Reference number	40651
Available from	Immediately

This semi-furnished split-level apartment with 2 bathrooms and an 11 sq. m. terrace with beautiful green views of Hvězda Park is on the 1st floor of a gated residential project with parking. Set in a quiet green neighborhood near Liboc Pond, within easy reach of the Hvězda and Ladronka forest parks, and the verdant valley of Divoká Šárka. Conveniently located for the international schools in Prague 5 and 6 as well as the airport, 150 m from a bus stop with connections to the Petřiny and Dejvická metro stations.

The lower floor of the apartment features a living room with a dining area and a fully fitted custom-made kitchen, a bedroom/study with a built-in wardrobe, a bathroom with a bathtub, toilet, and underfloor heating, and an entrance hall with a built-in wardrobe. The upper floor includes a **gallery** and a bedroom with access to the **terrace** and green views, two children's bedrooms with multiple custom-made built-in wardrobes and furniture, and a shower bathroom with a toilet.

Direct access to Hvězda Park (residents only), hardwood parquet floors, tiles, built-in wardrobes and storage, awning, gas boiler, dishwasher, induction cooktop, American type fridge with an ice maker, wine fridge, cellar. A garage, a parking space in front of the garage, plus an outdoor parking space are available.



* Size of the unit according to the Housing Act.
The area consists of the sum total of the internal area of every room.