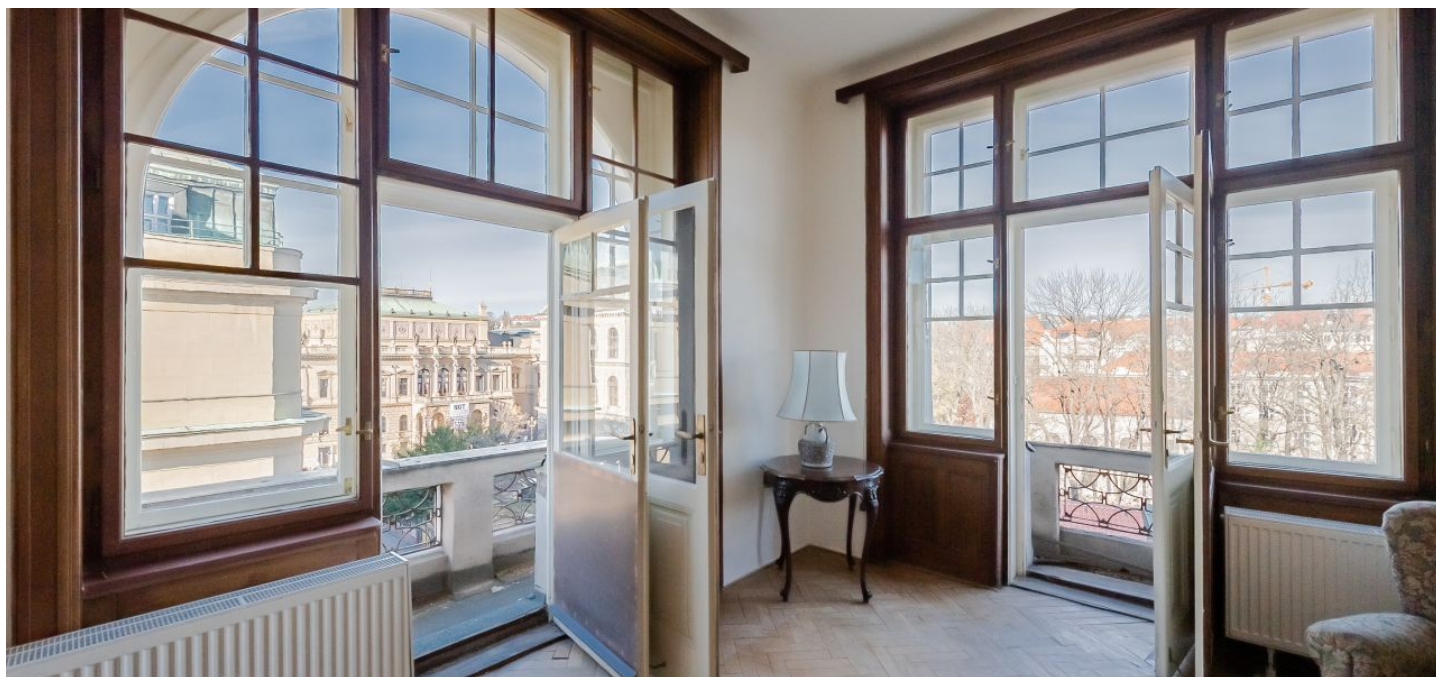




## Apartment Three-bedroom (4+1)

Sold

172 m², Prague 1, Josefov, Široká





## Apartment Three-bedroom (4+1)

**Sold**

172 m², Prague 1, Josefov, Široká

Total area	175 m²
Floor area*	172 m²
Balcony	3 m²
Parking	-
Cellar	-
PENB	G
Reference number	40560

This unique family apartment with beautiful views of the Old Jewish Cemetery and the Neo-Renaissance Rudolfinum offers an opportunity to create an elegant apartment with original architectural features, a fireplace, or a tiled stove. This quiet apartment is located on the 5th floor of an refined corner building from 1912-13 in Josefov in the heart of Old Town.

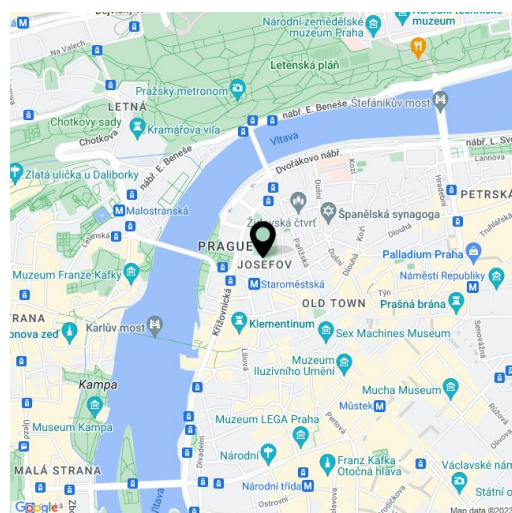
The layout of the apartment is three-bedroom with a separate kitchen. Its dominant feature is a spacious **living room with a bay window** and an adjoining **corner room with two French balconies**. The large central hall has access to the dining room, bedroom, kitchen with a pantry and a **balcony**, a bathroom, a closet, a walk-in closet, and a toilet.

The interior is intended for reconstruction, which will highlight the beauty of the **original doors**, windows, parquet floors, tiled stove, or fireplace. The building was designed in the spirit of modernity by architect **Richard Klenka**, whose works include the Ambassador Hotel on Wenceslas Square. The building has a **new elevator** and tasteful common areas with a beautifully shaped staircase.

The location with an impressive atmosphere is characterized by a number of important historical buildings. The building is across the street from the **Gothic Pinkas Synagogue**, and next to the **Maisel Synagogue** or the Faculty of Arts of the Charles University. The surrounding streets are full of restaurants and cafés, with **Old Town Square** and luxurious **Pařížská Avenue** only a few steps away. A long-term parking space can be rented in the underground garage of the nearby Rudolfinum building. The neighborhood is easily accessible by metro and tram.

Interior 171.7 m², balconies 1.5 m², 1.4 m², 0.34 m².

In addition to regular property viewings, we also offer real-time video viewings via WhatsApp, FaceTime, Messenger, Skype, and other apps.



\* Area of the unit according to the Civil Code. The area consists of the sum total area of the entire unit bounded by perimeter walls.