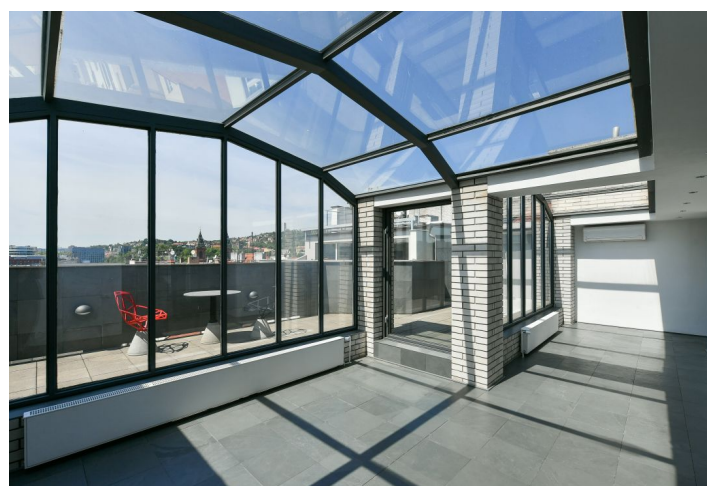
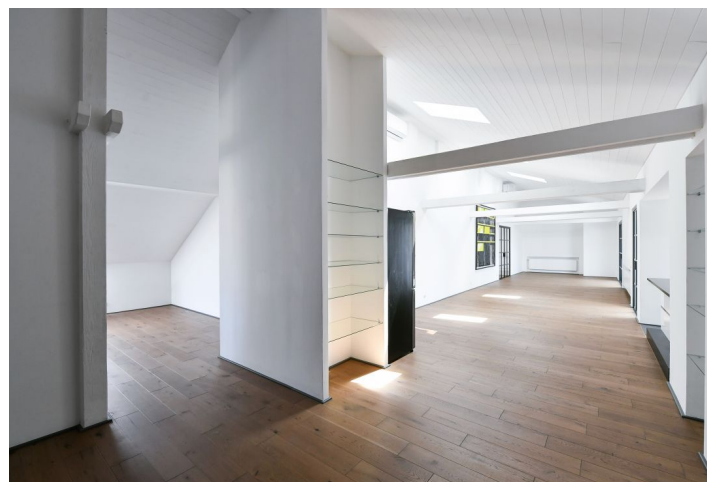




Apartment Three-bedroom (4+kk)

Rented

407.5 m², Prague 5, Smíchov





Apartment Three-bedroom (4+kk)

Rented

407.5 m², Prague 5, Smíchov

Total area	437 m²
Floor area*	408 m²
Terrace	30 m²
Parking	-
Cellar	-
PENB	G
Reference number	39906
Available from	31.05.2024

* Area of the unit according to the Civil Code. The area consists of the sum total area of the entire unit bounded by perimeter walls.

This unique partially furnished, spacious apartment with a terrace and panoramic views of Prague castle and Vltava river, which has undergone a complete renovation. The apartment is situated on the last two floors of a renovated classic apartment building with an elevator, a shared garden in the yard and impressive entrance areas. The house is located in Smíchov in Prague 5, a few steps from the Vltava embankment, within walking distance of the Kinský Garden, the French Lyceum, the Anděl metro station and the Nový Smíchov shopping and entertainment center with full amenities in the vicinity. Location with very fast access to the center.

The interior of the apartment consists on the lower of a generous living area, bathroom with shower, toilet and entrance hall with built-in wardrobes. Upper floor offers another generous living area, 3 bedrooms (one with en-suite bathroom with bath and toilet), third bathroom with shower and toilet, separated fully equipped kitchen, winter garden with fireplace. The terrace is interconnected with the kitchen and the winter garden.

Design furniture, wooden floors and tiles, **air conditioning**, **art objects**, French windows, **terrace**, **fireplace**, gas boiler, dishwasher, induction hob, washer, dryer, storage space. Common building charges are included in the rent. Electricity and gas are paid separately.



Apartment Three-bedroom (4+kk)

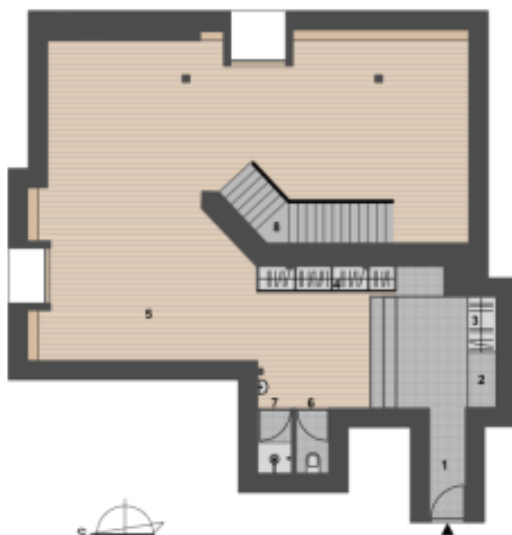
407.5 m², Prague 5, Smíchov

Rented

horní podlaží / upper floor 296 m²



spodní podlaží / lower floor 110 m²



- 21 venkovní terasa / terrace 29,6 m²
- 20 krb / fireplace
- 19 zimní zahrada / indoor garden 31,8 m²
- 18 kuchyně / kitchen 5,6 m²
- 17 ložnice / bedroom 35,0 m²
- 16 ložnice / bedroom 29,1 m²
- 15 obytný prostor / living space 54,4 m²
- 14 koupelna, sprcha / bathroom 6,4 m²
- 13 wc / toilet 1,4 m²
- 12 wc / toilet 1,4 m²
- 11 koupelna / bathroom 10,6 m²
- 10 ložnice / bedroom 33,0 m²
- 9 obytný prostor / living space 82,3 m²
- 8 schodiště / staircase 6,0 m²
- 7 sprcha / shower 1,7 m²
- 6 wc / toilet 1,6 m²
- 5 obytný prostor / living space 90,3 m²
- 4 šatní skřín / wardrobe 2,7 m²
- 3 šatní skřín / wardrobe 2,0 m²
- 2 kotel / boiler
- 1 vstupní chodba / entrance 12,2 m²

