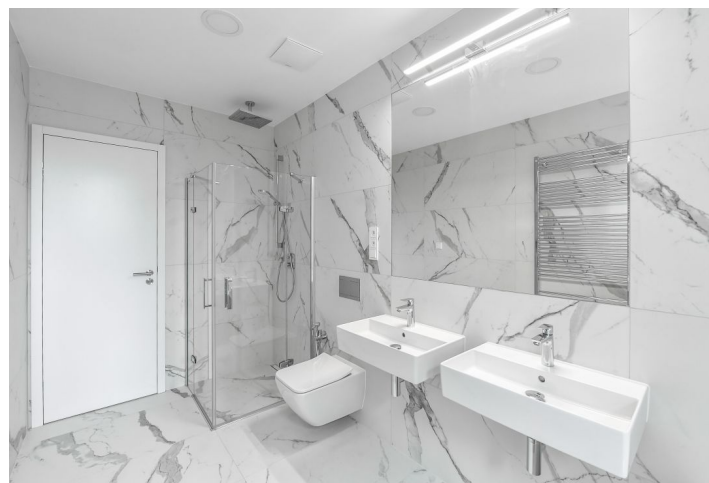
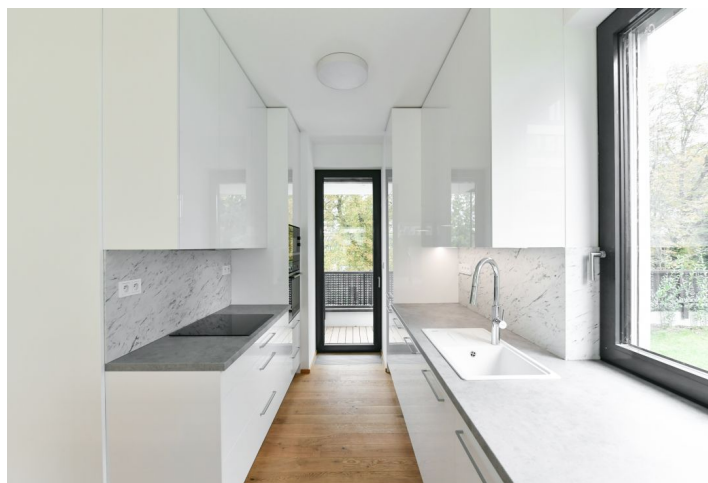




Apartment Three-bedroom (4+kk)

Rented

130 m², Prague 6, Střešovice, Cukrovarnická





Apartment Three-bedroom (4+kk)

Rented

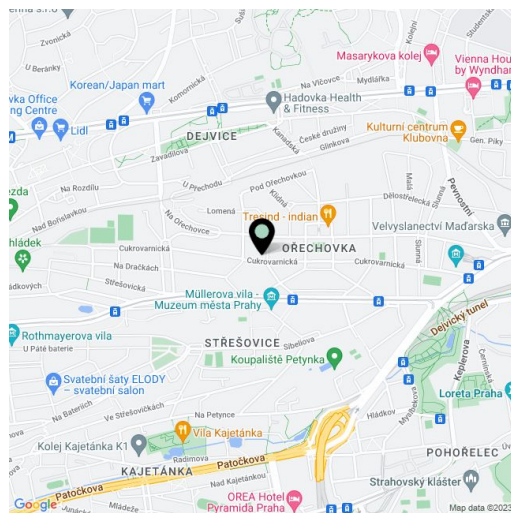
130 m², Prague 6, Střešovice, Cukrovarnická

Total area	152 m ²
Floor area*	130 m ²
Terrace	22 m ²
Garden	221 m ²
Parking	Two garage parking spaces included in the rent.
Garage	Yes
Cellar	Yes
PENB	G
Reference number	39562
Available from	Immediately

New high-standard bright unfurnished 3-bedroom 2-bathroom flat with a large private garden (220 m²) and 2 garage spaces situated on the upper ground floor of a modern and high quality residential complex with 24-hours reception, created according to the QARTA architecture studio in a premium location in the Ořechovka residential district in Prague 6 on the border of Střešovice and Dejvice. Lots of greenery, within easy driving distance are kindergartens and primary schools as well as a grammar school, Riverside School Prague - Junior High or ISP (International School of Prague), shops, medical services, easy access to the airport.

The layout consists of a large living room with fully equipped kitchen, dining area and access to **2 garden terraces** (shady northern and sunny southern one), master bedroom with walk-in closet, bathroom and access through the terrace to a **large garden**, another 2 bedrooms, a bathroom (bathtub, shower corner, 2 sinks, toilet), separate toilet, utility room and a large entrance hall.

In a high standard, **wooden floors**, **Siemens** kitchen appliances (incl. Induction hobs, microwave oven, dishwasher), floor-to-ceiling windows with el. controlled **blinds**, alarm, built-in wardrobes in the bedrooms and the hall. **Real estate project of 2020** - The best project in the Czech Republic. A room for strollers and bikes, security cameras. Common building charges, heating and water CZK 6,000 / month, electricity is paid separately. **2 garage spaces and a cellar** included. Available from August 2021.



* Area of the unit according to the Civil Code. The area consists of the sum total area of the entire unit bounded by perimeter walls.