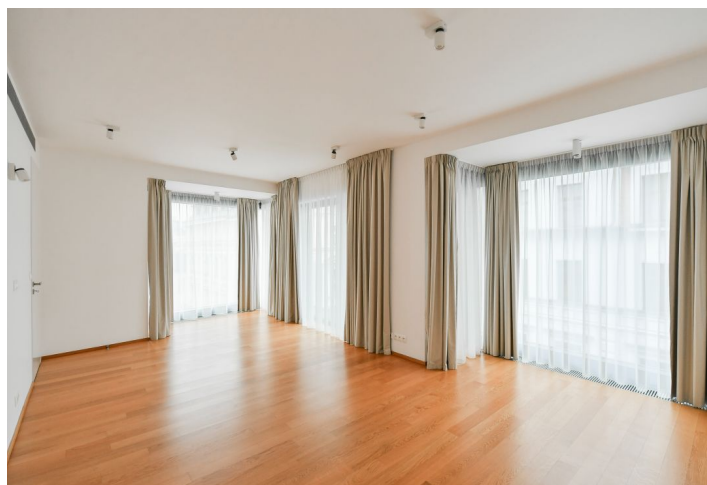
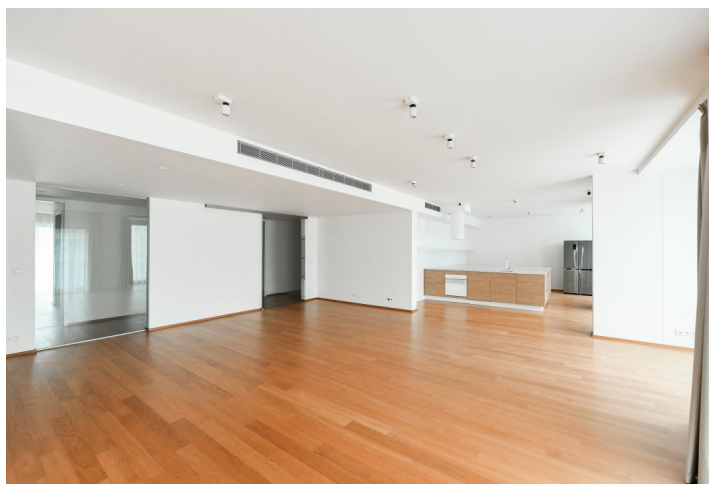




Apartment Four-bedroom (5+kk)

Rented

330 m², Prague 1, Nové Město, Purkyňova





Apartment Four-bedroom (5+kk)

Rented

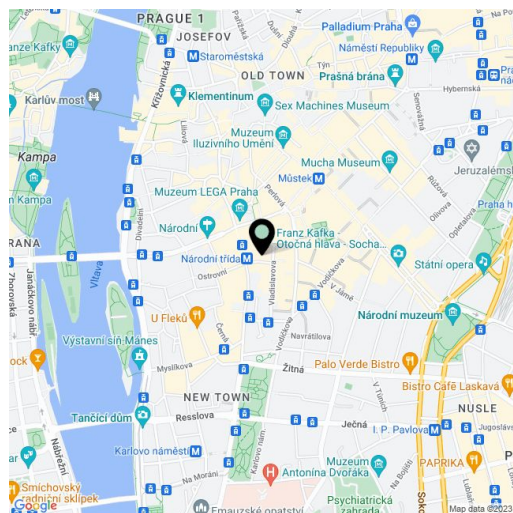
330 m², Prague 1, Nové Město, Purkyňova

Total area	361 m²
Floor area*	330 m²
Loggia	31 m²
Parking	Two garage parking spaces.
Garage	Yes
Cellar	Yes
Service price	Monthly deposit for services (incl. security), water, and heating: CZK 31,355/month. Electricity - transferred to the tenant.
PENB	C
Reference number	38850
Available from	Immediately

This exceptional apartment with enclosed balconies along its whole perimeter and direct access from the elevator is on the 5th floor of a modern building that is part of the multipurpose QUADRIO complex. Conveniently located in the very city center with full amenities within instant reach, 100 m from the Národní třída metro station (line B) and tram links, just a few minutes' walk to Wenceslas Square. Building amenities include underground garage parking and security.

The interior features a huge living room with a dining area, a fully fitted open plan kitchen, and access to several **enclosed balconies**. There is a master bedroom with a **walk-in closet**, an en-suite bathroom and access to three enclosed balconies, two bedrooms with en-suite bathrooms - one also with a walk-in closet, a fourth bedroom, a laundry room, an additional guest toilet, and an entrance hall. **All bedrooms have access to the balcony.**

High-quality materials and finishes, **hardwood floors**, tiles, floor-to-ceiling windows, security entry door, central heating, **cooling system**, washer, dryer, induction cooktop, dishwasher, **cellar**, bike/pram storage. Two on-site **garage parking spaces** are included.



* Size of the unit according to the Housing Act.
The area consists of the sum total of the internal area of every room.