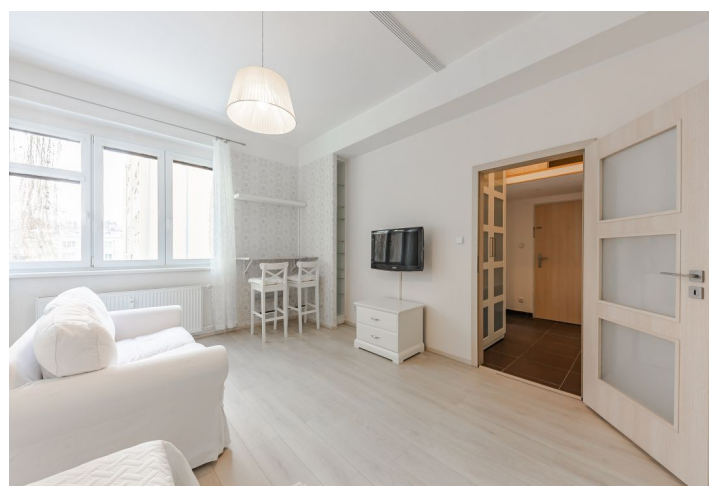




## Apartment Studio (1+1)

37 m², Prague 6, Břevnov, Mládeže

**Sold**





## Apartment Studio (1+1)

**Sold**

37 m², Prague 6, Břevnov, Mládeže

Total area	37 m²
Parking	-
Cellar	-
PENB	G
Reference number	38594

This bright and cozy apartment overlooking the greenery is located on the 1st floor of a building from 1936, which was created according to the urban plan of renowned architect Ladislav Machoň. It stands in popular Břevnov, on a quiet side street within walking distance of Hradčany, the Great Strahov Garden, and Kajetánka Park near the Břevnov Monastery.

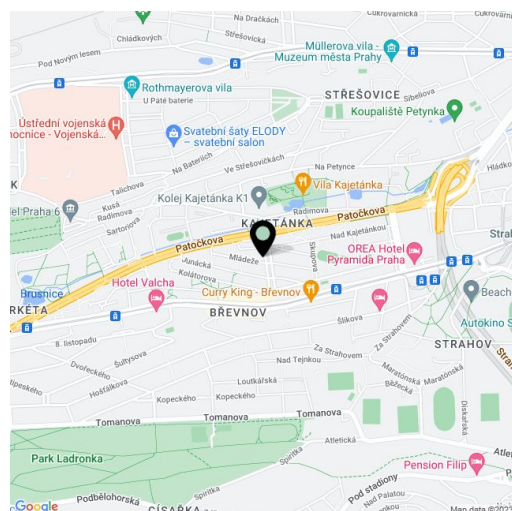
The area of the apartment is divided into a west-facing corner living room, a kitchen, a bathroom (with a bathtub), a separate toilet, a pantry, and a hallway with built-in storage.

The interior has been completely renovated. Facilities include floating laminate floors; the kitchen is equipped with a gas stove, electric oven, hood, refrigerator, and freezer. There is also a washing machine. Central heating. The building has been refurbished, insulated, windows are plastic, common areas are guarded by a **camera system**. A **pram room** is available for residents.

The location has all civic amenities; nearby are shops including a **farmers' market grocery store**, a pharmacy, a clinic, restaurants and cafes, a branch of the city library, or the Dlabachov cinema. It is a very green neighborhood—streets are lined with trees and **Kajetánka Park**, the **Monastery Garden**, the **Great Strahov Gardens**, or **Ladronka Park** are all close-by. Transport connections are provided by buses and trams; both stops are within a 5-minute walk.

Interior 37 m².

In addition to regular property viewings, we also offer real-time video viewings via WhatsApp, FaceTime, Messenger, Skype, and other apps.



\* Area of the unit according to the Civil Code. The area consists of the sum total area of the entire unit bounded by perimeter walls.