



Apartment One-bedroom (2+kk)

Sold

73 m², Prague 2, Vinohrady, Mánesova





Apartment One-bedroom (2+kk)

Sold

73 m², Prague 2, Vinohrady, Mánesova

Total area	73 m²
Parking	-
Cellar	-
PENB	G
Reference number	38152

We have the exclusive right to sell this apartment, finished to a high standard, which is located in the recently completed Mánesova78 Residence. It boasts an attractive address in the city center near Riegrovy Sady Park and Jiřího z Poděbrad Square.

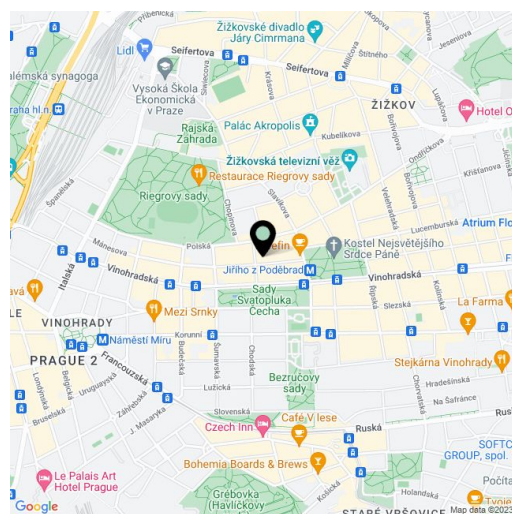
The area of the apartment on the 4th floor consists of a living room with a preparation for an open plan kitchen, a bedroom with a bathroom, a separate toilet, and a foyer.

High-standard facilities include **Foglie D'oro parquet floors**, DelConca imitation **marble** tiles, Grohe (Essence New), Laufen, Kaldewei, and Riho sanitary ware, Art Nouveau paneled doors, period-style fire safety entrance doors, and double-glazed wooden windows. Central heating. **Cellar storage unit at an extra cost.**

Mánesova Street, surrounded by important buildings by famous architects as well as restaurants, bistros, and cafes, including the popular **Kaaba Café**, connects Jiřího z Poděbrad Square to the Main Railway Station. The ride to the city center is quick thanks to the proximity of a metro station and tram stop less than a 5-minute walk away. On nearby Jiřího z Poděbrad Square with the iconic **Church of the Sacred Heart of the Lord** by Josip Plečnik there are nice bars, cafes, shops, and regular **farmers' markets**. You can go for pleasant walks in nearby **Riegrovy Sady Park** with a garden restaurant and a Sokol gym with a swimming pool.

Apartment floor area 73 m², cellar 2.1 m².

In addition to regular property viewings, we also offer real-time video viewings via WhatsApp, FaceTime, Messenger, Skype, and other apps.



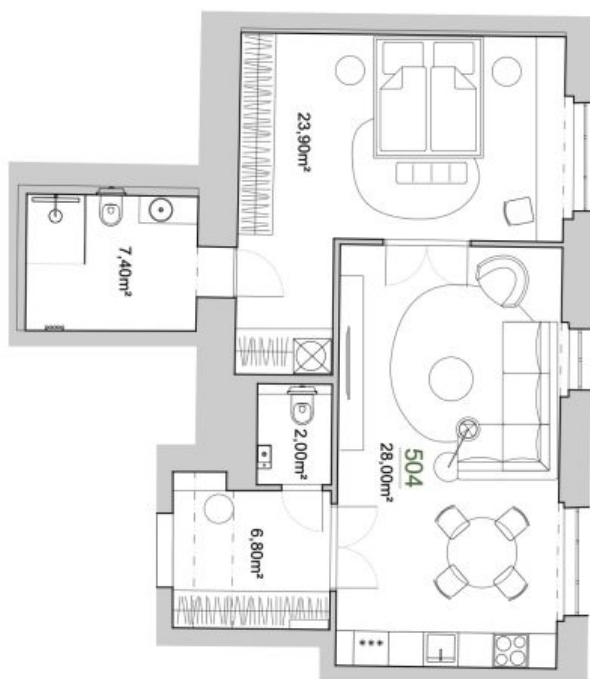
* Area of the unit according to the Civil Code. The area consists of the sum total area of the entire unit bounded by perimeter walls.



Apartment One-bedroom (2+kk)

73 m², Prague 2, Vinohrady, Mánesova

Sold



0 0,5 1 2 3m

Užitná plocha bytu 68,10m²
Plocha přístěk 4,90m²

Celková plocha bytu 73,00m²

Balkon

Plocha celkem 73,00m²



202.MNS

REKONSTRUKCE BYTOVÉHO DOMU

DOCUMENTACE FORMÁT:	DATA
STUDIE 2 x A4	11/2020
ČÁST:	MĚŘENÍ
STAVEBNÍ	
VÝKRES:	ČÍSLO VÝKRESU
BYT 504	