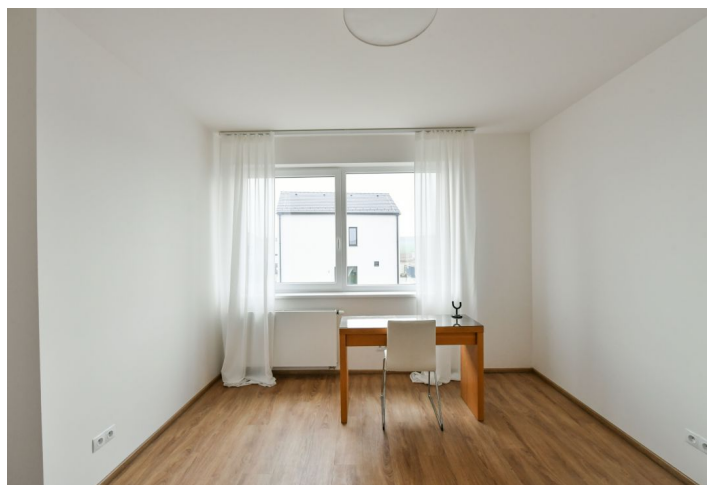
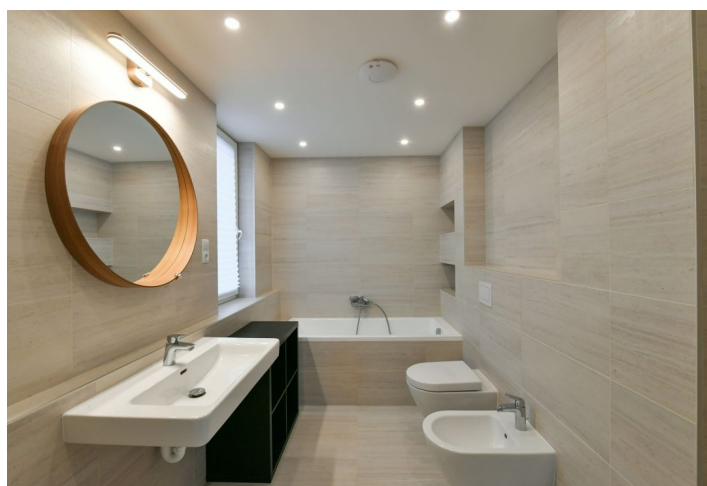




House Three-bedroom (4+kk)

Rented

142 m², Prague 8, Březiněves, Skřivánčí





House Three-bedroom (4+kk)

Rented

142 m², Prague 8, Březiněves, Skřivánčí

Plot	405 m²
Foot print	135 m²
Garden	270 m²
Parking	Garage and parking in front of the garage.
Garage	Yes
Cellar	-
PENB	B
Reference number	38083
Available from	Immediately

This is a semi furnished 3-bedroom 2-bathroom corner townhouse with a garden in the recently built residential housing project Rodinné domy Březiněves that was granted the prestigious Best of Realty 2017 award. The home is set opposite a park with a children's playground, on the edge of the village in a quiet residential area full of greenery, 13 km from the center of Prague, 10 minutes from Ládví metro station. Complete amenities are available within easy reach including the shopping and entertainment areas in Letňany and Ďáblice.

The ground floor includes a living room with a dining area, a fully fitted open plan kitchen and access to the **terrace / garden**, a bathroom with a walk-in shower and a toilet, a utility room, a storage room, and an entrance hall with garage access. The upper floor features 3 separate bedrooms, a bathroom with a bathtub, a bidet and a toilet, and a hall.

Vinyl flooring, tiles, large format and French windows, gas heating, Villeroy & Boch and Laufen bathroom fixtures, dishwasher, induction cooktop, microwave oven. A **garage** and a **parking space** in front of the garage is available. Utilities are billed separately.

