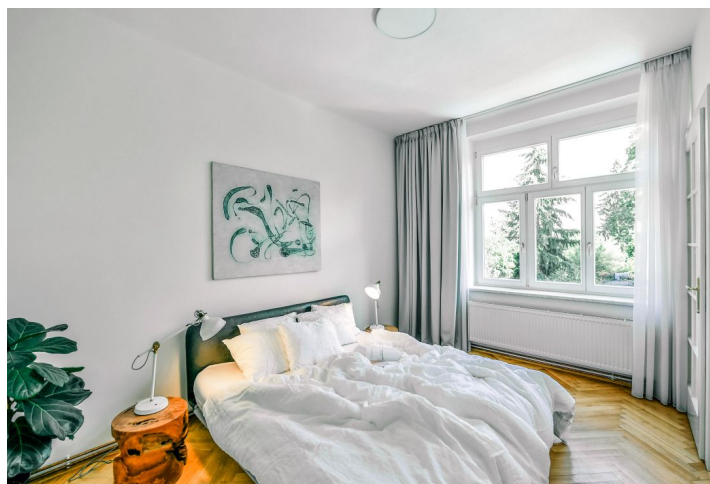




Apartment Two-bedroom (3+kk)

Rented

71 m², Prague 6, Dejvice, Kozlovská





Apartment Two-bedroom (3+kk)

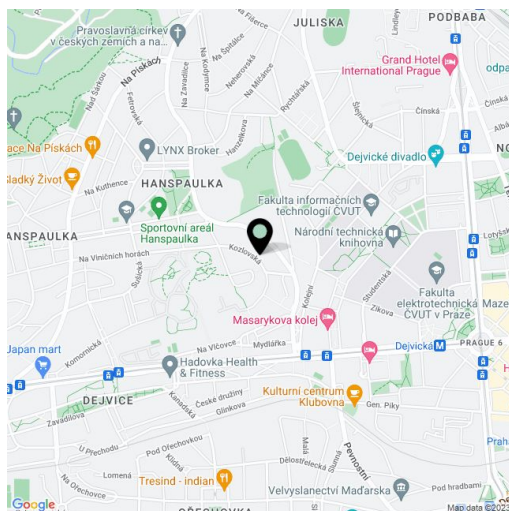
Rented71 m², Prague 6, Dejvice, Kozlovská

Total area	71 m ²
Parking	-
Cellar	-
PENB	G
Reference number	37026
Available from	Immediately

This newly refurbished 2-bedroom apartment equipped with designer furniture is situated on the upper ground floor of a renovated 1930s villa on a quiet street in the prestigious residential neighborhood of Hanspaulka, on the edge of the lovely green Šárka Valley. Easily accessible by public transportation, with quick access to the city center, the airport, and international schools. Located in close vicinity to the Dejvická metro station with multiple tram and bus links, plus complete services and amenities in the immediate area.

The interior features a master bedroom, a study/second bedroom, a living room with a fully fitted open plan kitchen, a bathroom including a bathtub, a separate toilet, and an entrance hall with a built-in wardrobe.

Pretty green views, preserved original details, **hardwood parquet floors**, tiles, large windows, high ceilings, gas boiler, dishwasher, TV. Service charges and charge for water consumption: CZK 1,000/month. Gas and electricity are billed separately (transferred to the tenant).



* Area of the unit according to the Civil Code. The area consists of the sum total area of the entire unit bounded by perimeter walls.