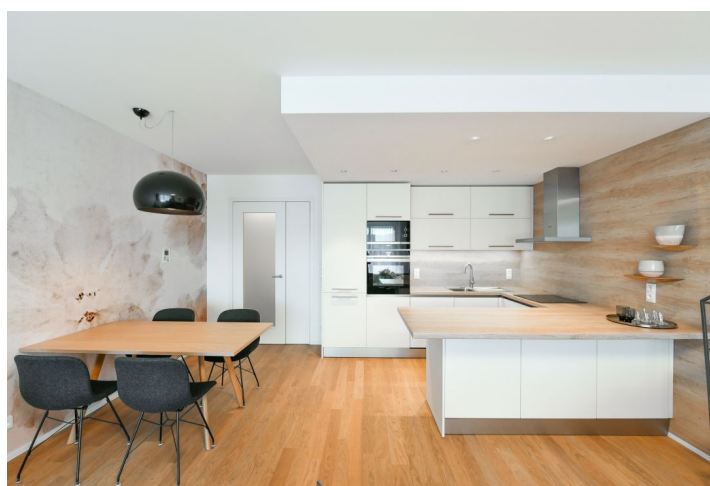




## Apartment Two-bedroom (3+kk)

Rented

89 m<sup>2</sup>, Prague 6, Břevnov, Radimova





## Apartment Two-bedroom (3+kk)

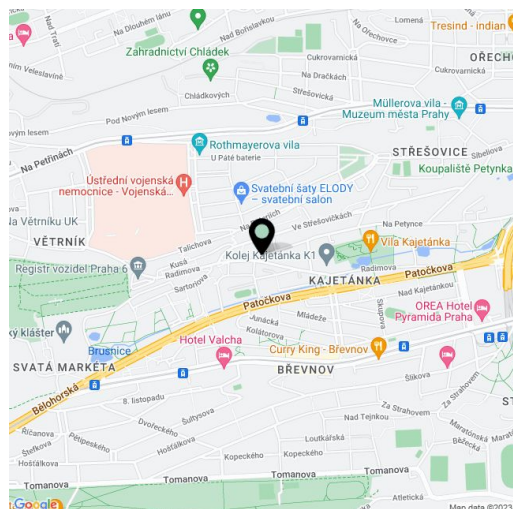
**Rented**89 m<sup>2</sup>, Prague 6, Břevnov, Radimova

Total area	101 m <sup>2</sup>
Floor area*	89 m <sup>2</sup>
Terrace	12 m <sup>2</sup>
Parking	Garage parking.
Garage	Yes
Cellar	Yes
PENB	G
Reference number	36887
Available from	Immediately

Benefiting from 2 terraces and green views, this is a brand new 2-bedroom apartment on the second floor in the newly built Terasy Břevnov residential project, with a lift and underground parking. The modern residence is set in a slope in the immediate vicinity of the historic part of Střešovice, Prague 6. Located near the Břevnovský Monastery and Park, close to Markéta, Kajetánka and Ladronka Parks and the Petynka outdoor swimming pool, within walking distance of the Prague Castle complex. Attractive location with excellent access to the city center, the airport and international schools, close to the Blanka Tunnel access road, with full amenities in close vicinity.

The interior features a spacious living room with a fully fitted open plan kitchen and **terrace** access, plus two separate bedrooms with a shared **terrace** (one also has a **walk-in closet**). There is a bathroom with a bathtub, a walk-in shower and a toilet, **walk-in closet** / storage room, an additional guest toilet, and an entrance hall with built-in wardrobes and storage.

**Oak floors**, tiles, security entry door, automatic external blinds, central heating, dishwasher, induction cooktop, microwave oven, kitchenware, video entry phone, **cellar**, bike and pram storage, chip entry. A **garage parking** space is included. An additional parking space is available at CZK 1500/month. Deposit for service charges, water and heating: CZK 4000/month. Electricity is billed separately.



\* Area of the unit according to the Civil Code. The area consists of the sum total area of the entire unit bounded by perimeter walls.