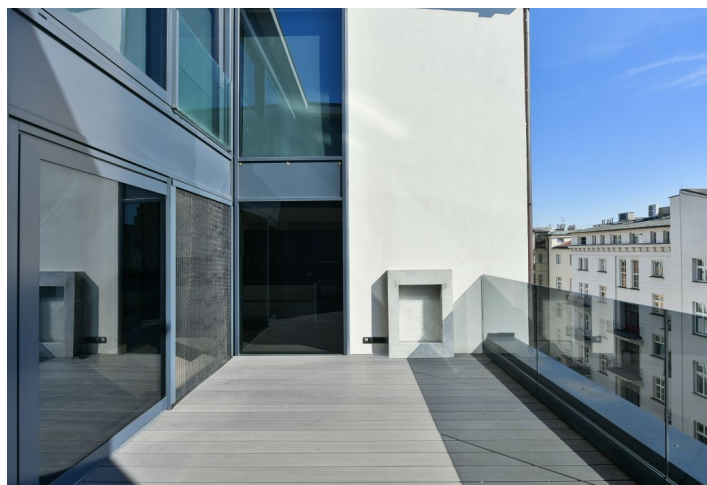
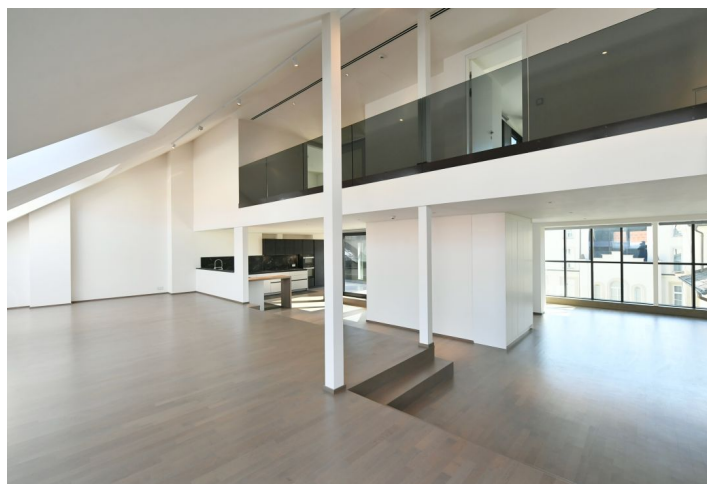
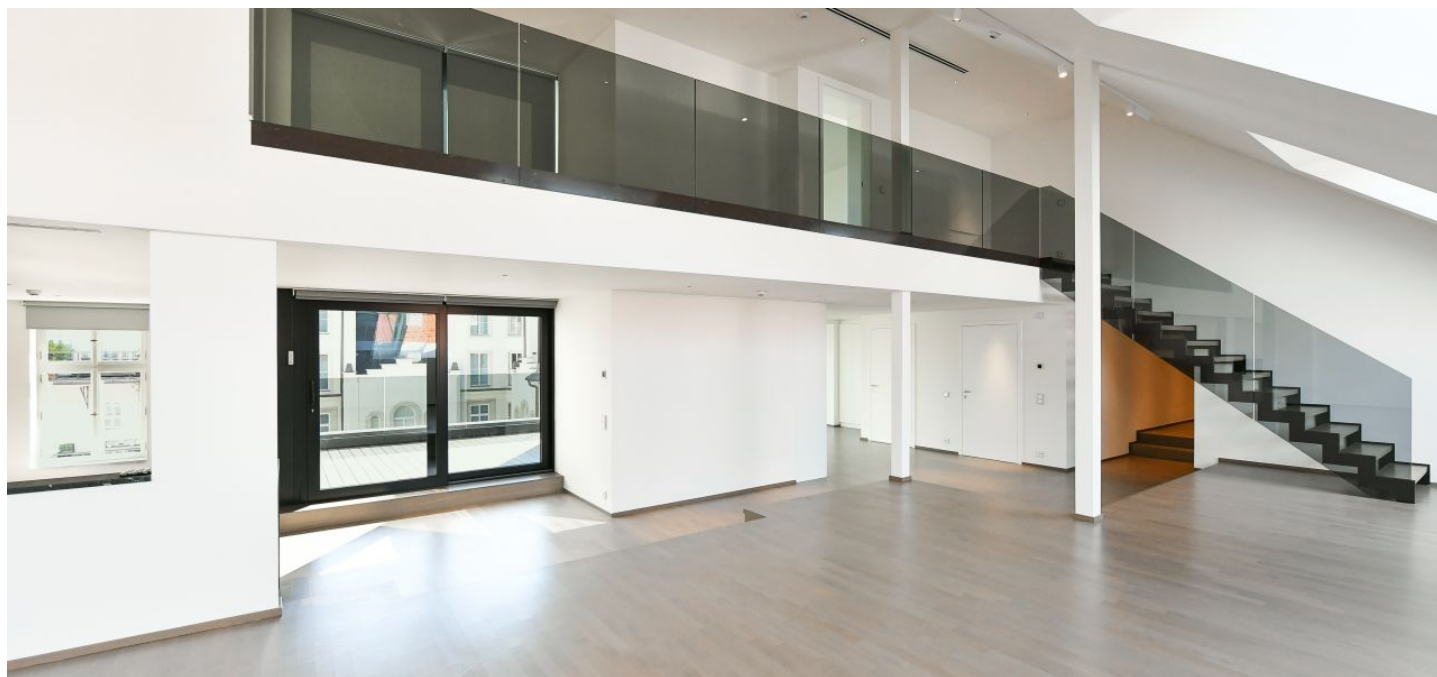




Apartment Three-bedroom (4+kk)

€ 6 394 | CZK 158 000

275 m², Prague 5, Malá Strana, Zborovská





Apartment Three-bedroom (4+kk)

€ 6 394 | CZK 158 000

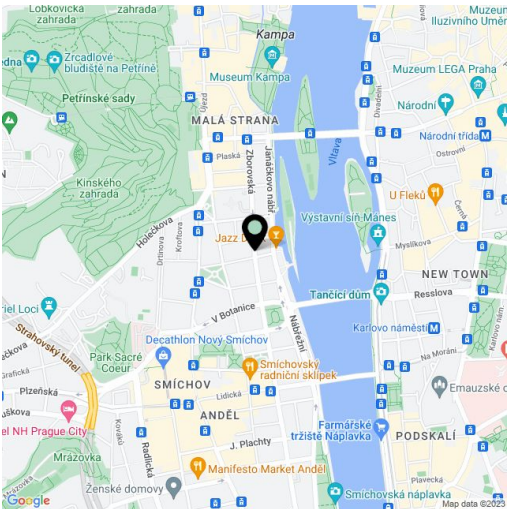
275 m², Prague 5, Malá Strana, Zborovská

Total area	293 m²
Floor area*	275 m²
Terrace	18 m²
Parking	On-site garage parking.
Garage	Yes
Cellar	Yes
Service price	Deposit for services and water CZK 98/m2/month. Gas and electricity - transferred to the tenant.
PENB	A
Reference number	36513
Available from	Immediately

High standard attic apartment with parking. This split-level apartment with an 18 sq. m. terrace and 3 bathrooms is situated on the 5th floor of a late 19th century apartment building that has been meticulously renovated, offering a 24/7 reception, security, camera system, swimming pool, a sauna, a gym, underground parking, an elevator, and a landscaped courtyard garden. Centrally located just steps from the Vltava riverbank, within walking distance of Kampa Island, Petřín Hill Park, Malá Strana (Lesser Town), and Old Town. The neighborhood has easy access to the Prague Castle, the Anděl commercial zone and metro station, and the French School.

The lower level features a large living room with a dining space and a fully fitted open plan kitchen, a bedroom, a bathroom, a utility room, an additional separate toilet, a **walk-in closet**, and a huge open entrance hall with access to the **terrace** facing the courtyard. The upper floor includes a gallery, two bedrooms, and two en-suite bathrooms.

Smart home control and security system, quality equipment and finishes, **air-conditioning**, **oak floors**, large-format tiles, security entry door, built-in wardrobes, triple-glazed windows, remote-control operated atelier windows, blackout blinds, gas boiler, washer, dryer, **SieMatic** kitchen with **Miele** appliances, induction cooktop, dishwasher, microwave oven, video entry phone, WiFi, **cellar**, chip entry, charging station for electric cars. A **garage parking** space is available at CZK 10,000/month + VAT.



* Area of the unit according to the Civil Code. The area consists of the sum total area of the entire unit bounded by perimeter walls.