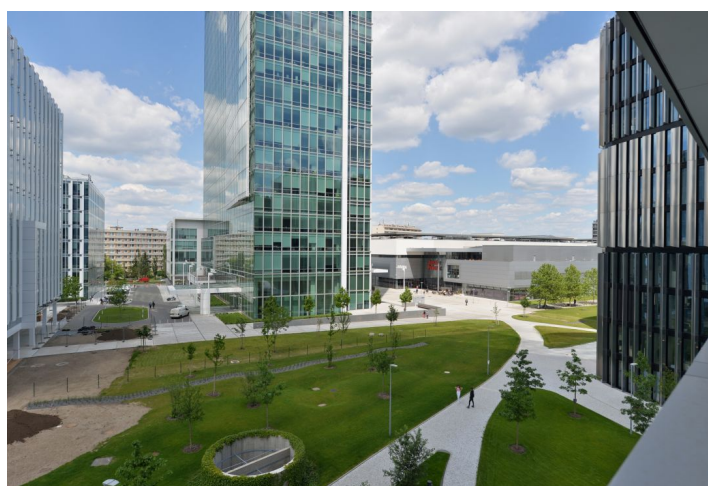
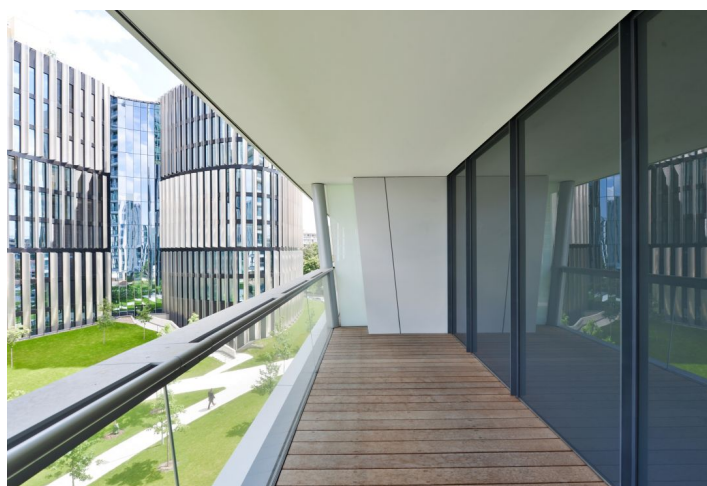




Apartment One-bedroom (2+kk)

Sold

58.3 m², Prague 4, Krč, Milevská

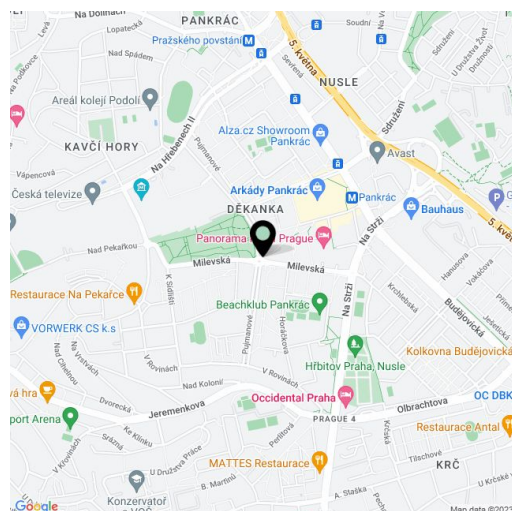




Apartment One-bedroom (2+kk)

Sold58.3 m², Prague 4, Krč, Milevská

Total area	82 m ²
Floor area*	58 m ²
Terrace	23 m ²
Parking	Lockable private garage
Garage	Yes
Cellar	-
Service price	5 540 CZK monthly
PENB	A
Reference number	35858



* Area of the unit according to the Civil Code. The area consists of the sum total area of the entire unit bounded by perimeter walls.

This completely and well-equipped studio with a large terrace and its own lockable garage is located on the 5th floor of the V Tower building, a unique residential project with services that are standard in the world's capital cities. This new Prague landmark is set in the greenery of the Pankrác Plain near a metro station.

The large open plan main room with a kitchen and dining area is connected by a **glass wall** with a more than **20-meter terrace**, which has an entrance from the bedroom as well. There is also an entrance hall, a pantry/laundry room, and a bathroom with a partially separate toilet.

The **Poggenpohl Sedlak** kitchen, equipped with integrated **Siemens appliances** (electric oven with a grill, refrigerator with a freezer, dishwasher, washing machine with a dryer, induction hob, extractor hood), basket system, stone worktop, and glass tiling is ready for comfortable use. The floor is made of **quality wood**. The apartment is protected by a security system. The unit has a **lockable garage** with an electrical outlet and lighting, where you can park 1 large and 1 small car or up to 3 motorcycles.

The building was designed and implemented by a team of experts from around the world and uses **renewable energy sources**, only **non-hazardous materials**, gentle cooling, heating, and ventilation, intelligent management of electricity consumption, and a comprehensive water saving system. Residents have access to a wide range of high-level services, including a **24-hour reception** and technical management, a **spa and wellness area**, a **gym**, or a private cinema.

The unique, 104-meter-high V Tower building is **surrounded by a park** in an area that, thanks to its location and excellent accessibility, attracts a number of important Czech and international companies. In the immediate vicinity is the Arkády Pankrác shopping center, a **metro station**, the **large Central Park**, a wide selection of restaurants and cafes, and other high-level services.

Useable area 58.3 m², terrace 23.4 m², garage 23.2 m², 3 parking spaces for motorcycles



Apartment One-bedroom (2+kk)

58.3 m², Prague 4, Krč, Milevská

Sold

