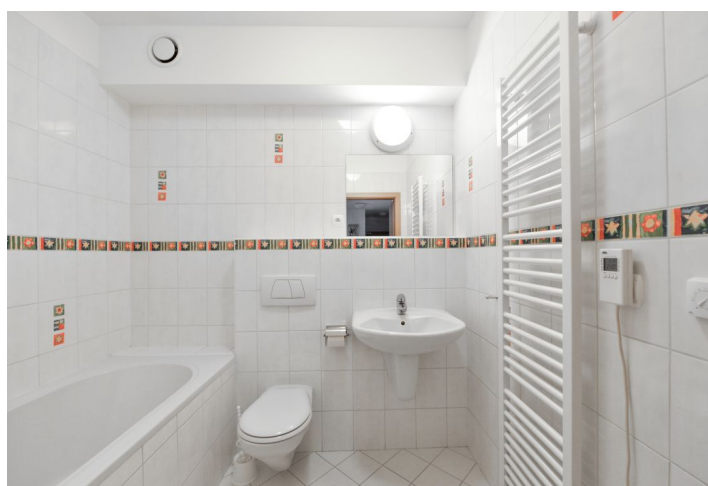




## Apartment Three-bedroom (4+kk)

Rented

115 m², Prague 6, Vokovice, Tibetská





## Apartment Three-bedroom (4+kk)

**Rented**

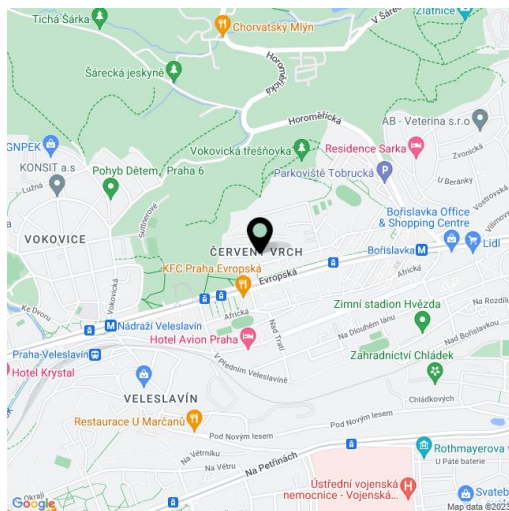
115 m², Prague 6, Vokovice, Tibetská

Total area	142 m²
Floor area*	115 m²
Terrace	27 m²
Parking	Parking is available.
Cellar	Yes
PENB	G
Reference number	35843
Available from	Immediately

Boasting a large terrace and green views, this semi furnished 3-bedroom 2-bathroom ground floor apartment is situated in the Terasy Červený Vrch residential project with a 24/7 reception, security, parking, and a private back garden. Standing on a quiet cul-de-sac near the wonderful Šárka Valley, with full amenities within easy reach, just minutes to a tram stop and a few more to the Bořislavka metro station (line A, ten min. to the city center). Conveniently located for the airport and numerous international schools (Park Lane, ISP, Riverside School).

The interior features a spacious living room with a fully fitted open plan kitchen and access to the **terrace**, a master bedroom with built-in wardrobes and an en-suite bathroom (**massage bath**, toilet), two further bedrooms, a family bathroom (bathtub, toilet), a utility room, a separate toilet with a bidet, and a large entrance hall with built-in wardrobes.

**Hardwood parquet floors**, tiles, security entry door, large windows, external blinds, central heating, washing machine, dishwasher, induction cooktop, microwave oven, vacuum cleaner, iron and ironing board, TV, WiFi, UPC cable, **cellar**, chip entry to the building. **Parking** is available in front of the building. Deposit for service charges, water, and heating: CZK 4,300/month. Electricity is billed separately.



\* Area of the unit according to the Civil Code. The area consists of the sum total area of the entire unit bounded by perimeter walls.