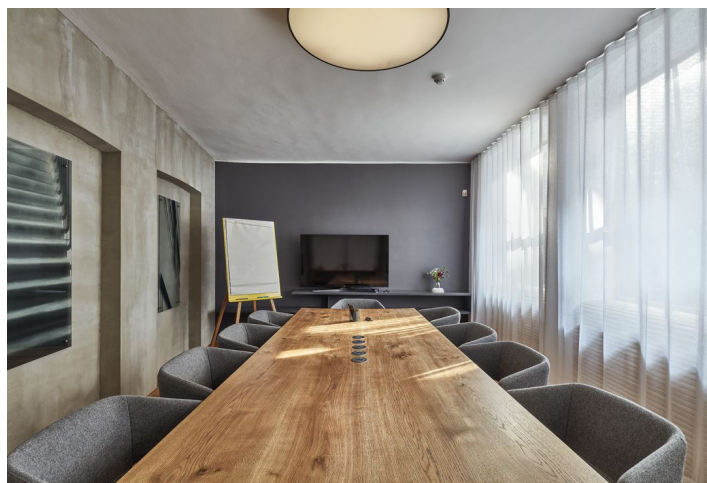




## Office space

Prague 1, Staré Město, Salvátorská

Ask for price



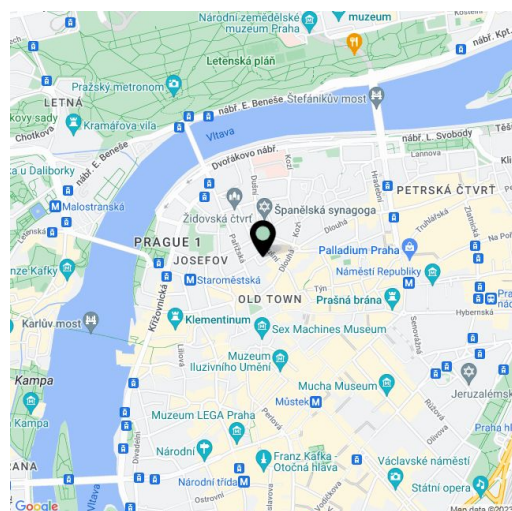


## Office space

Prague 1, Staré Město, Salvátorská

Ask for price

Available area	500 m <sup>2</sup>
Cellar	-
Parking	-
PENB	G
Reference number	35747



Membership in this business center will provide you with an elegant workspace and place for meetings. Located in the sensitively renovated premises of an exceptional historical building in the center of Prague, you will find everything you need for you and your guests.

Membership provides access to a diverse and professionally developed community of members, allowing you the possibility to connect with interesting people and take advantage of opportunities. Thanks to the platform for meetings, individual networking, informal membership activities, and social events, a lively and inspiring space is created.

## Location:

The premises are located in the center of Prague near Old Town Square, within walking distance of the **Staroměstská (line A)** metro station and tram stop, the **Můstek (line A and B)** metro station, or the Dlouhá třída tram stop. Letná is a 15-minute walk away and you can reach the **Náměstí republiky metro station (line B)**, where the Palladium and Kotva shopping malls are located, on foot within 10 minutes. The neighborhood is full of high-quality restaurants and cafes, shops, and cultural venues. It is possible to provide parking in the private blue zones of Prague 1.

## Flexible monthly membership

The monthly membership is intended for those who need a professional workspace and at the same time require maximum flexibility. The ideal solution for people on the move, independently working professionals, or teams working on fast-growing projects. Members can work in the open space, which is highly variable – it depends on whether you want to read emails on a comfortable sofa or concentrate in peace at your computer sitting at a table. Members can also use five different meeting rooms, a private café, and professional reception services.

Monthly membership is available in a number of options according to the expected level of use of the space and other services. Individual tariffs can be changed at any time, and membership can be interrupted or terminated at any time. Depending on the type of tariff, you get free hours in the work space, a 20 – 50% discount on meeting rooms, admission to events as part of a free membership, and much more.

For their educational program, the business center focuses on current topics and trends that affect our professional and personal lives. In our modern context and together with you, the business center tries to understand and influence what will happen in economics, business, science, technology, and politics.

## Membership price list:





Office space

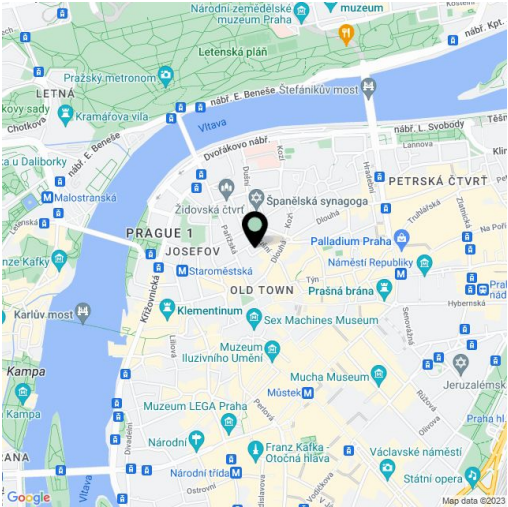
Prague 1, Staré Město, Salvátorská

Ask for price

Available area	500 m²
Cellar	-
Parking	-
PENB	G
Reference number	35747

Chair 20 hours	CZK 2,500/month
Chair 40 hours	CZK 4,500/month
Chair 80 hours	CZK 5,500/month
Chair Unlimited	CZK 6.500/month

Lease and service charges listed without VAT. Lessee pays no commission.





## Office space

Prague 1, Staré Město, Salvátorská

Ask for price

