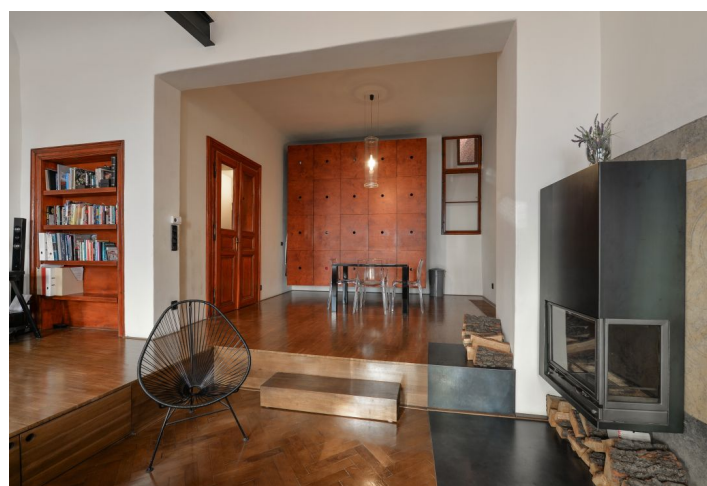
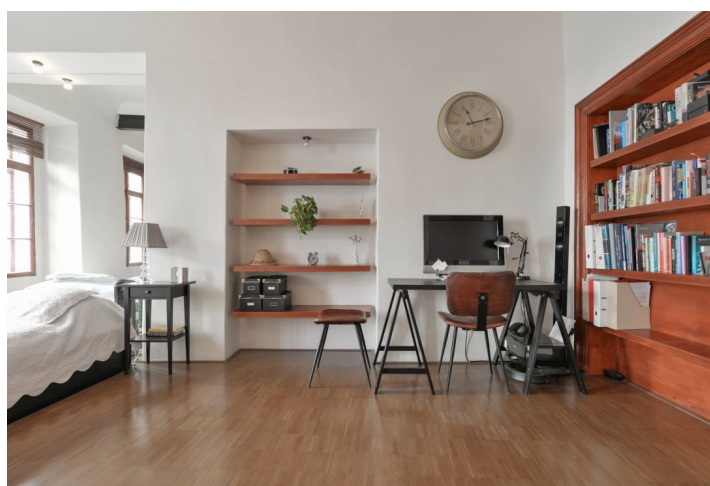




## Apartment Studio (1+kk)

68 m², Prague 1, Malá Strana, Malostranské náměstí

**Sold**





## Apartment Studio (1+kk)

**Sold**68 m<sup>2</sup>, Prague 1, Malá Strana, Malostranské náměstí

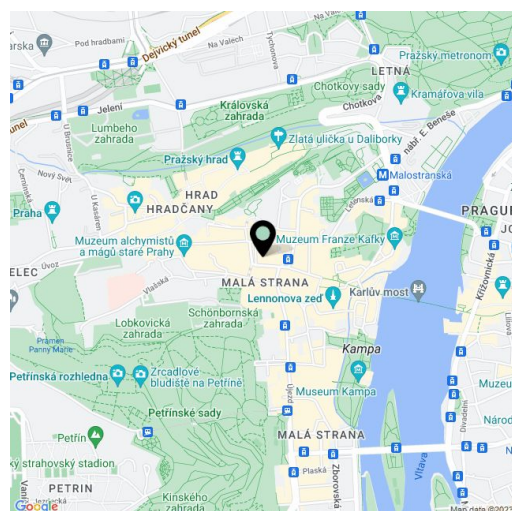
Total area	68 m <sup>2</sup>
Parking	-
Cellar	Yes
PENB	G
Reference number	34522

This apartment with a unique atmosphere and unobstructed views of the Prague Castle is part of a Renaissance building that stands directly across from the most important Baroque building in Prague, the St. Nicholas Church on Lesser Town Square.

The apartment is located on the 1st floor; the layout is divided into a **40-meter living room** with a kitchen and a bedroom, a dining room, a hallway, and a bathroom with a toilet.

The Renaissance building was built in the 15th century on Gothic foundations; it got its present appearance at the turn of the 18th and 19th centuries. The apartment was completely renovated in 2004. Facilities include **parquet floors**, refurbished **wooden windows** and doors, a wood burning **fireplace**, **original 16th-century fresco**, stucco plasterboards, and a kitchen unit. Gas heating.

The attractive location **below the Prague Castle** is characterized by a number of important palaces, carefully landscaped aristocratic and monastery **gardens**, winding streets, and the icon of Prague—the **Charles Bridge**. The building is close to the Chamber of Deputies and the Senate. There is a theater and a café in the building. Its excellent transport accessibility by tram and metro and fast reach of services (post office, grocery stores, restaurants, cafes, and schools ranging from kindergartens to high schools) make it a pleasant place to live. **Kampa Island** or the **Petřín** cable car is within walking distance.



\* Area of the unit according to the Civil Code. The area consists of the sum total area of the entire unit bounded by perimeter walls.

Interior 68 m<sup>2</sup>.





## Apartment Studio (1+kk)

68 m<sup>2</sup>, Prague 1, Malá Strana, Malostranské náměstí

**Sold**

