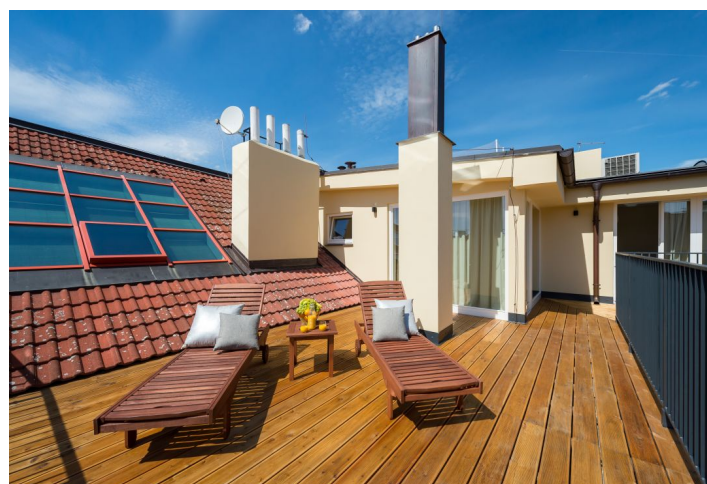
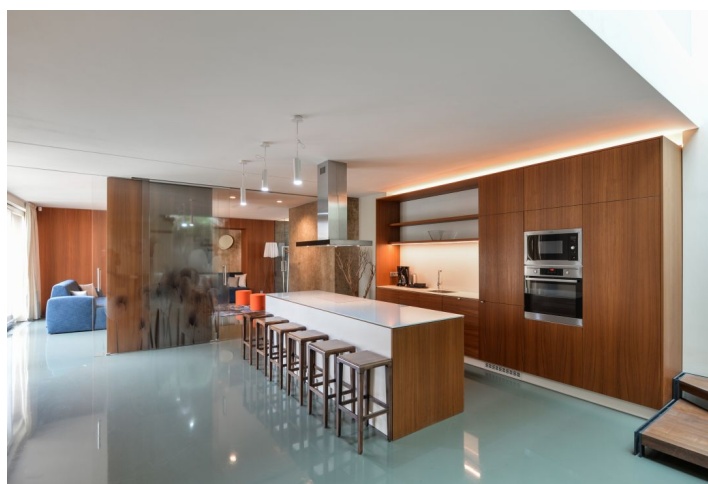
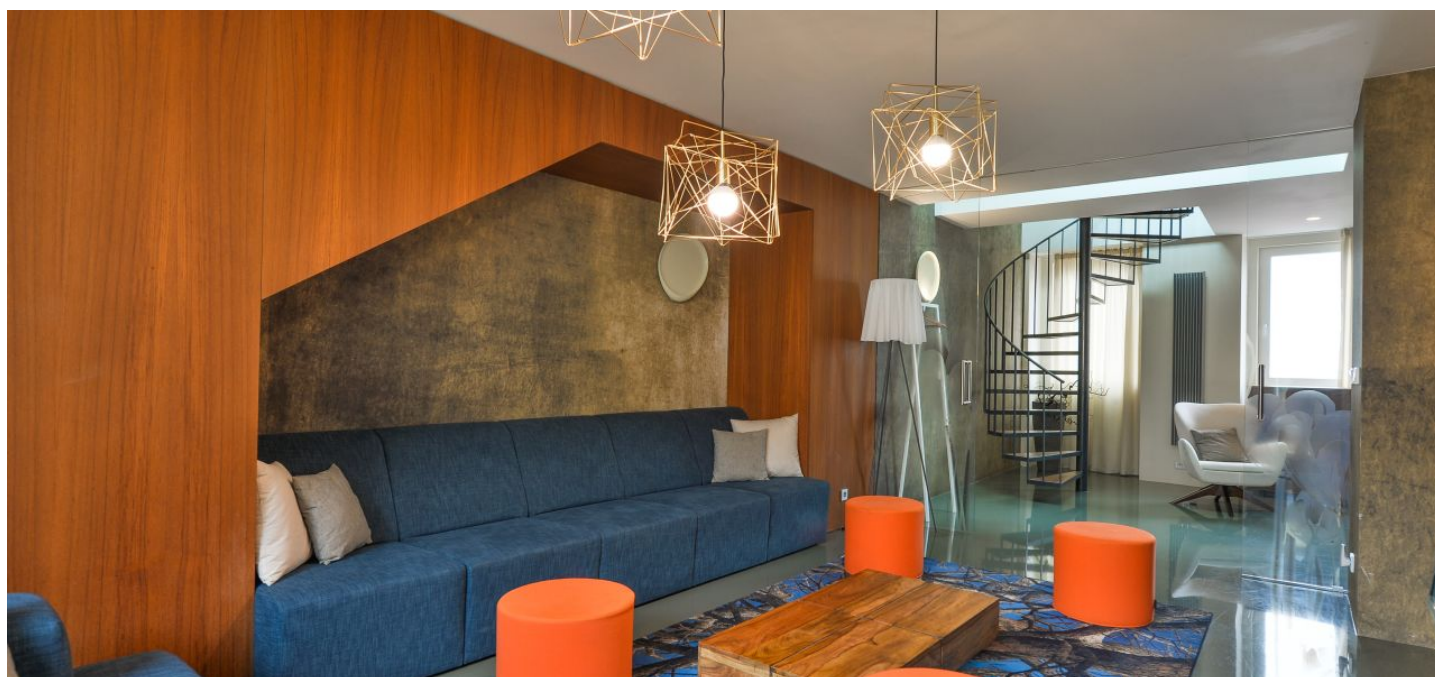




Apartment Six-bedroom (7+1)

Rented

277 m², Prague 1, Nové Město, Jindřišská





Apartment Six-bedroom (7+1)

Rented

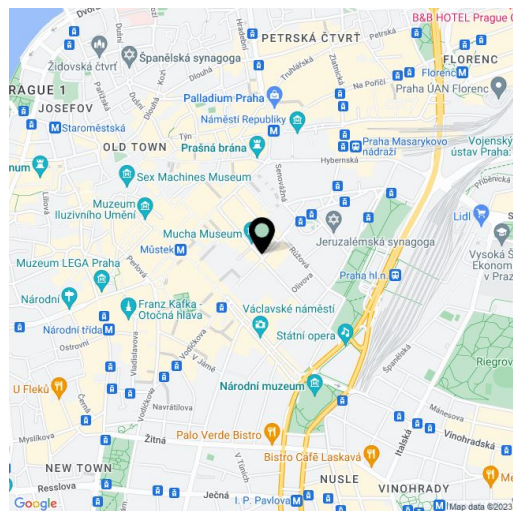
277 m², Prague 1, Nové Město, Jindřišská

Total area	332 m²
Floor area*	277 m²
Terrace	55 m²
Parking	-
Cellar	-
PENB	G
Reference number	32625
Available from	Immediately

Benefiting from a 55 m² terrace, this is remarkable, fully furnished, fully air-conditioned, 6-bedroom 3-bathroom split-level attic apartment is situated on the top fourth floor of a well kept historic building with an elevator. Located in the very center of Prague, just a few minutes from the Prague Main Railway Station, Masaryk Railway Station, and Wenceslas Square with all three Prague metro lines and full amenities in the vicinity. Great location for people who enjoy city life and the convenience of being able to walk to just about anywhere. There is a tram stop just steps from the building, and within walking distance there are numerous historic sights, cultural venues, quality services, shops, cafes, restaurants, and more.

The lower floor features a large, fully fitted eat-in kitchen, a living room, a separate bedroom, and a walk-through office with a circular staircase leading up to a guest bedroom. There is a bathroom (shower, bidet, toilet), and an entrance hall with storage. The upper floor includes three bedrooms with **terrace** access, an en-suite bathroom (walk-in shower, toilet, bidet shower), and a family bathroom (walk-in shower, bidet, toilet).

High standard equipment, polished screed floors, tiles, security entry door, built-in wardrobes in the bedrooms and the hall, master switch, blinds, gas boiler, washer/dryer, induction cooktop, dishwasher, microwave oven, TV, alarm, video entry phone, satellite reception, garden furniture. Service charges and water bills: CZK 1,000/person/month. Gas and electricity will be transferred to the tenant. Available from July 2019.



* Area of the unit according to the Civil Code. The area consists of the sum total area of the entire unit bounded by perimeter walls.



Apartment Six-bedroom (7+1)

277 m², Prague 1, Nové Město, Jindřišská

Rented

