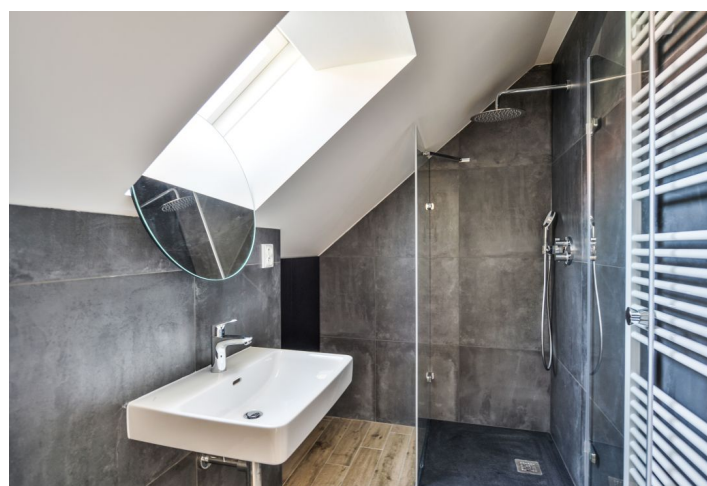
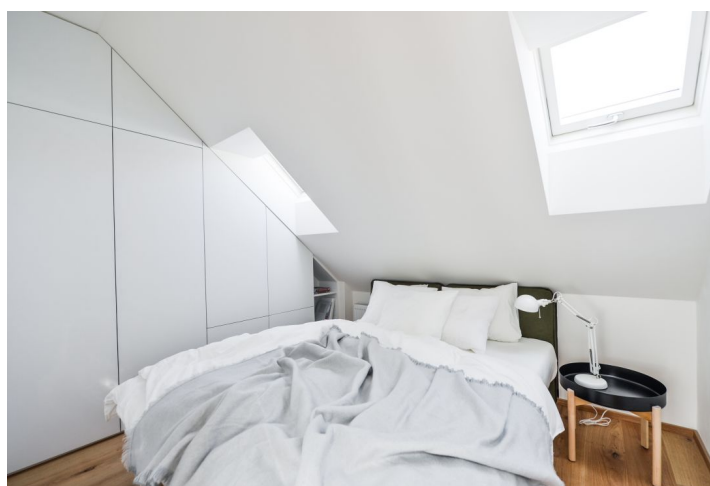




Apartment One-bedroom (2+kk)

Rented

41 m², Prague 7, Holešovice, Heřmanova





Apartment One-bedroom (2+kk)

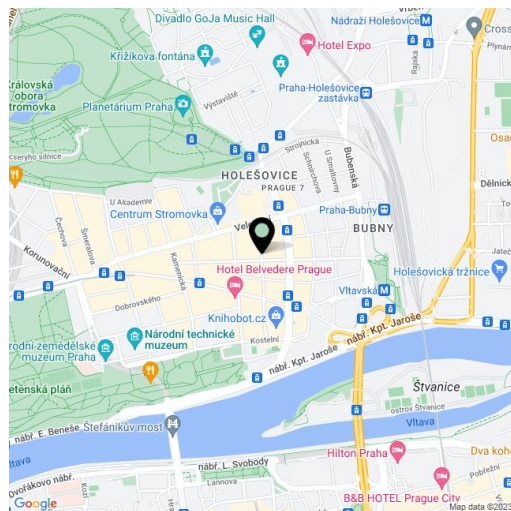
Rented41 m², Prague 7, Holešovice, Heřmanova

Total area	53 m ²
Floor area*	41 m ²
Terrace	12 m ²
Parking	-
Cellar	Yes
PENB	C
Reference number	32273
Available from	Immediately

Benefiting from a 12 m² south facing terrace, this air-conditioned 1-bedroom attic apartment fully equipped with design furniture is set on the fifth top floor of a completely refurbished residential building with a new lift and preserved original details. Well located within walking distance of two popular Prague parks - Stromovka and Letná. Trendy area with full amenities, numerous restaurants, bistros and cafes, a two min. walk from a tram stop with quick connections to the city center and Hradčanská and Vltavská metro stations. Highly sought after location within easy reach of the airport and international schools in Prague 6.

The interior features an air-conditioned living room with a fully fitted open plan kitchen, a dining area and access to the **terrace** facing the quiet green back yard, one bedroom with built-in wardrobes and storage, a utility area, and a bathroom including a walk-in shower and a toilet.

Hardwood floors, tiles, security entry door, light tunnels, gas boiler, washer / dryer, dishwasher, microwave oven, sofabed, TV, **cellar**. Service charges and water bills: CZK 1000/month for one person. Gas and electricity are billed separately.



* Area of the unit according to the Civil Code. The area consists of the sum total area of the entire unit bounded by perimeter walls.