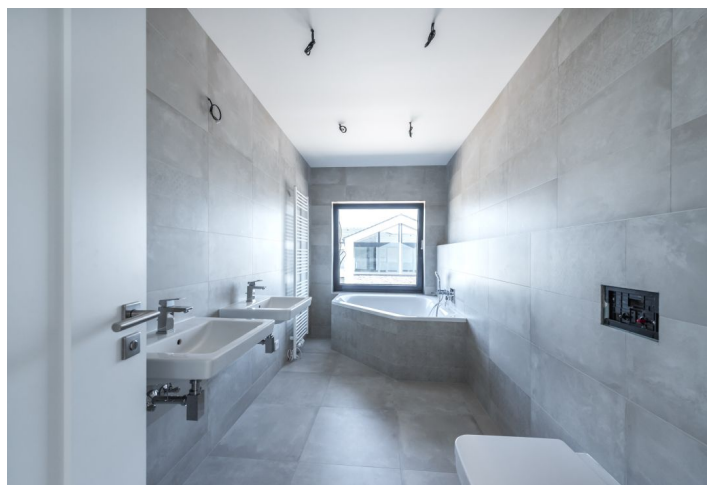




## House Five-bedroom (6+kk)

**Sold**

334 m², Praha-východ, Dobřejovice, Okružní





## House Five-bedroom (6+kk)

**Sold**

334 m², Praha-východ, Dobřejičovice, Okružní

Usable area	334 m²
Plot	1 090 m²
Foot print	194 m²
Garden	896 m²
Floor area	265 m²
Balcony	16 m²
Terrace	53 m²
Parking	Double garage
Garage	Yes
Cellar	-
PENB	B
Reference number	30767

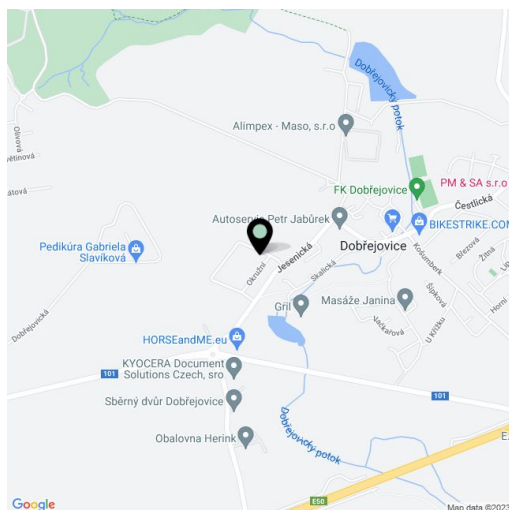
This timeless family house with 3 terraces and a large garden will provide you with an opportunity to live close to nature yet with full urban amenities nearby. It is located close to Prague, which is easily accessible by car and suburban bus.

The ground floor will consist of a living area with a kitchen connected to a terrace and a garden by large French windows. There will also be a study / guest bedroom with access to the terrace, a bathroom, a dressing room, a laundry room, a pantry, and an entrance hall. Upstairs, there will be a master bedroom with a bathroom, another 3 bedrooms (2 with private terraces), 2 dressing rooms, a shared bathroom, and a gallery.

The house will boast saddle roofs with large skylights and shingles or slate tiles. Facilities will include **three-layer wooden flooring**, large-format tiles, and pinewood terraces, large-format aluminium windows, Villeroy & Boch and Grohe sanitary ware, Sapeli doors with concealed hinges, or a central vacuum cleaner. **The double garage** will have a direct entrance to the house.

The architecture of the house is inspired by the village's original residential development. There is a kindergarten and elementary school, a football field and children's playground, a grocery store, and a library in the village. The prestigious **Sunny Canadian International School** is a 4-minute drive away. There is a bus stop a few meters from the houses, and the ride to the Opatov metro station (line C) takes 30 minutes. Thanks to the proximity of the D1 motorway and the Prague Ring Road, the location is easily accessible by car. The dominant feature of the village is the castle, which originated from a former fortress. The surroundings offer many opportunities for sports and relaxation in the countryside. The extensive **Průhonice Park** and **Dendrological Gardens** are a short walk away. In neighboring Čestlice, there is a wide range of shopping opportunities and the Aquapalace sports and relaxation complex.

Interior 264.89 m², terraces 3.6 + 12.1 m², garden terrace 52.98 m², built-up area 193.89 m², garden 896.11 m², land 1,090 m².





House Five-bedroom (6+kk)

334 m², Praha-východ, Dobřejšovice, Okružní

Sold

[VILY DOBŘEJŠOVICE]



svoboda&williams | CHRISTIE'S  
INTERNATIONAL REAL ESTATE

Schéma půdorysu domu představuje orientační řešení domu, kuchyní a lázeň a nábytek nejsou součástí dodávky domu, zařízení je zobrazeno pouze pro informaci. Specifikace pro konstrukci, povrchové úpravy a rozložení výhledů je přibližným příkladem "standardu nemovitosti".



Rodinný dům č.1  
1 + 2 NP | 193,89 m²

č.	místnost	m²
1	vstupní hala	9,40
2	šatna	3,77
3	T. M. + prádelna	7,33
4	koupelna	4,27
5	pracovna	15,61
6	schodiště	5,00
7	obýtný prostor	56,04
8	spíž	3,22
9	garáž	28,34
10	sklad zahrada	7,93
11	terasa	52,98

No Part Type 2, 30 00 Part 1  
+420 257 328 281 +420 257 322 032  
info@svoboda-williams.com

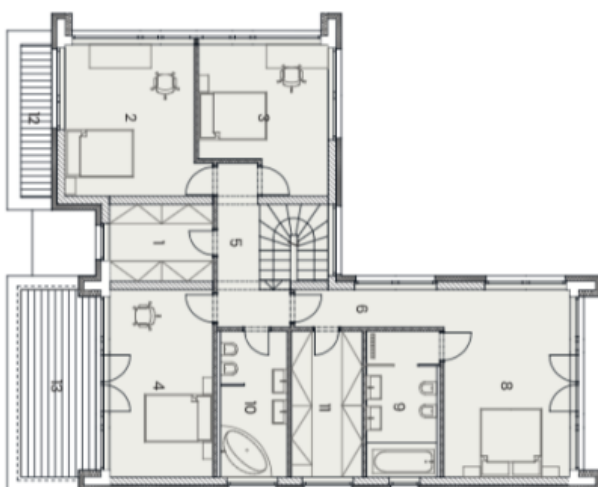


# House Five-bedroom (6+kk)

Sold

334 m², Praha-východ, Dobřejšovice, Okružní

[VILY DOBŘEJŠOVICE]



svoboda&williams | CHRISTIE'S  
INTERNATIONAL REAL ESTATE

Schéma podlaží bytu představuje dispoziční plán bytu. Každý nápis číslo a název místnosti souhlasí s dispozičním plánem bytu. Zobrazení je zobrazeno pouze pro informaci. Specifikace pro konstrukci, povrchové úpravy a rozložení vybavení je předmětem přílohy "Standard nemovitosti".



Rodinný dům č. 1  
1 + 2 NP | 139,68 m²

č.	místnost	m²
1	šatna	6,86
2	pokoj	17,44
3	pokoj	14,89
4	pokoj	16,69
5	chodba	6,95
6	chodba	4,82
7	schodiště	4,89
8	ložnice	25,18
9	koupelna	8,91
10	koupelna	8,42
11	šatna	8,93
12	terasa	3,6
13	terasa	12,1

Na Pevňštině 2, 10 00 Praha 1  
+420 257 328 281 +420 257 322 032  
info@svoboda-williams.com