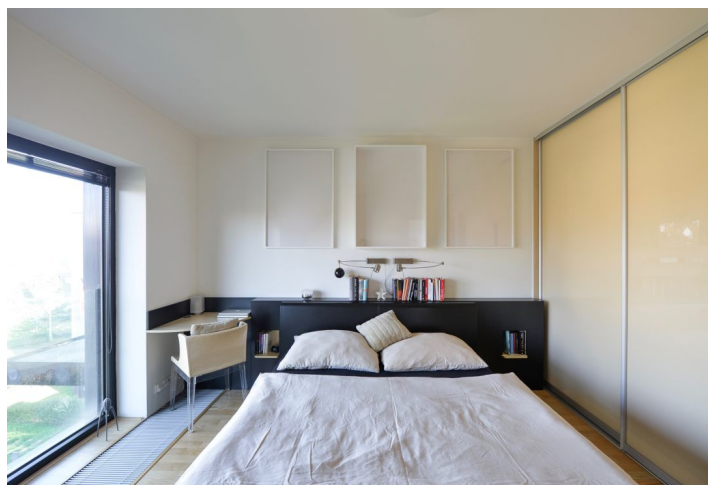




## Apartment Three-bedroom (4+kk)

Rented

125 m², Prague 6, Vokovice, Nobelova





## Apartment Three-bedroom (4+kk)

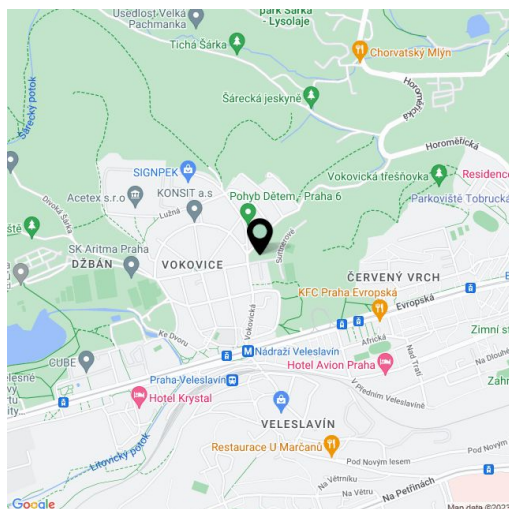
**Rented**125 m<sup>2</sup>, Prague 6, Vokovice, Nobelova

Total area	131 m <sup>2</sup>
Floor area*	125 m <sup>2</sup>
Balcony	6 m <sup>2</sup>
Parking	Garage parking.
Garage	Yes
Cellar	Yes
PENB	G
Reference number	30523
Available from	Immediately

Modern furnished 3-bedroom apartment with balcony, situated on the third floor in the modern residential complex Na Krutci, designed by Kuba & Pilař architectural studio, with 24-hour reception and security, sports center and tennis court. Convenient to the airport and international schools in Prague 6, with quick connections to the city center, close to Šárka protected natural preserve. Full amenities in the area, five min. to Nádraží Veleslavín tram stops and metro station.

The interior includes living room with fully fitted open kitchen, dining area, and access to balcony, bedroom with en-suite bathroom (walk-in shower, toilet), other 2 bedrooms, bathroom with bathtub, shower, and toilet, utility room, and entrance hall.

Wooden floors, tiles, large French windows, built-in wardrobes and storage in the bedrooms, security entry door, automatic sliding external shade panels, gas boiler, Bosch appliances, washer, dryer, TV, video entry phone, alarm, basement storage unit (10 m<sup>2</sup>), camera system. Service charges, reception, security, grounds maintenance and water approx. CZK 5500 per month. Gas and electricity will be transferred to the tenant. Available from March 15th, 2019.



\* Area of the unit according to the Civil Code. The area consists of the sum total area of the entire unit bounded by perimeter walls.