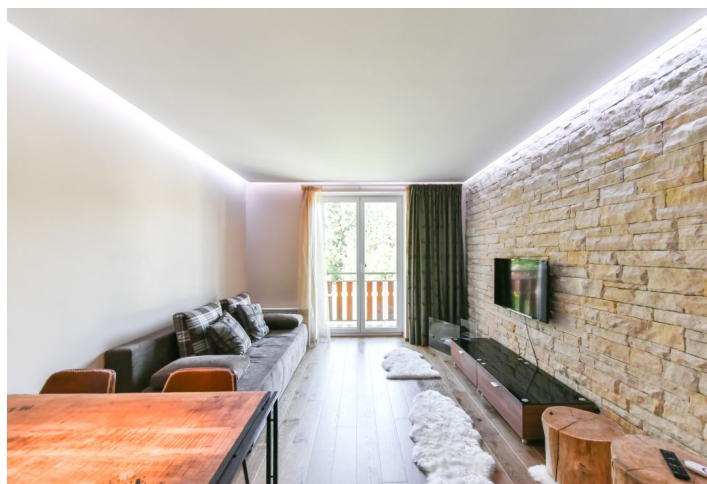
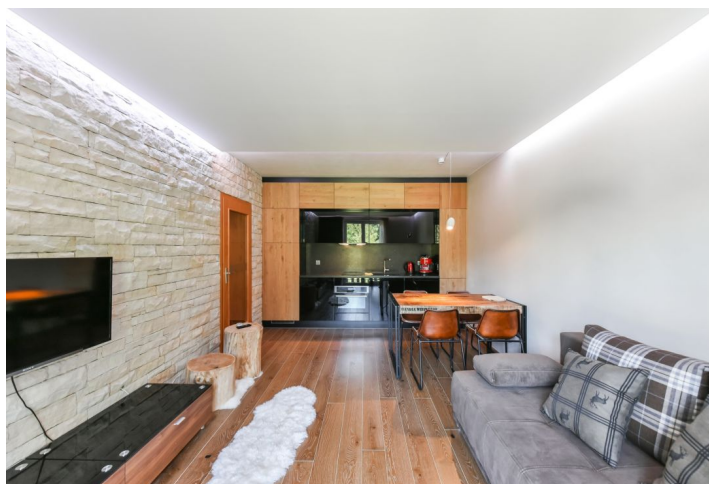




## Apartment One-bedroom (2+kk)

**Sold**

39 m², Trutnov, Pec pod Sněžkou, Pec pod Sněžkou





## Apartment One-bedroom (2+kk)

**Sold**39 m<sup>2</sup>, Trutnov, Pec pod Sněžkou, Pec pod Sněžkou

Total area	39 m <sup>2</sup>
Parking	Parking by the building
Garage	Yes
Cellar	Yes
Service price	7 726 CZK monthly
PENB	G
Reference number	30297

This fully equipped modern mountain apartment with a balcony overlooking the garden is situated on the 1st floor of a building in the Poustevník wellness complex. It is located at the foot of Mount Javor, near the highest mountain in the Czech Republic, at an altitude of 950 m. A quiet place in a forest with a ski path from the house leading up to a ski slope.

The layout features a living room with a kitchen, a bedroom, a bathroom, and an entrance hall. The balcony is accessible from both rooms.

The interior was recently **completely renovated** (in 2017). Features include a wood/black lacquer/granite worktop, a built-in oven and a microwave oven, a dishwasher, a fridge with a freezer, and a coffee maker. **The floor is wooden**, the wall in the living room is lined with stone tiles. RGB LED lighting contributes to its **cozy atmosphere**. There is a TV and wi-fi connection. Residents have access to a **private heated indoor pool**, a **sauna**, a laundry room, a ski storage room with an electric shoe dryer, a children's playground, a game room, a trampoline, or a fireplace. The restaurant in the complex is open during the high season. Parking is possible on a private plot near the building. The building is maintained by a custodian. Apartment ownership is cooperative.

The apartment house is located on a slope above a stream valley, **just 200 meters from the cable car station to Javor** - part of a popular ski resort with 12.5 km of slopes and 10 ski lifts. The interconnected ski area of Černá hora-Pec is **the largest Czech ski resort** with 41 km of slopes on 1 ski pass. The town of Pec pod Sněžkou is situated **in the middle of the KRNAP national park** and is popular in all seasons. **Biking and hiking trails** and a bobsled track are closeby. The trip from Prague takes less than 2 hours.

Interior 39 m<sup>2</sup>, balcony 5 m<sup>2</sup>.

\* Area of the unit according to the Civil Code. The area consists of the sum total area of the entire unit bounded by perimeter walls.

