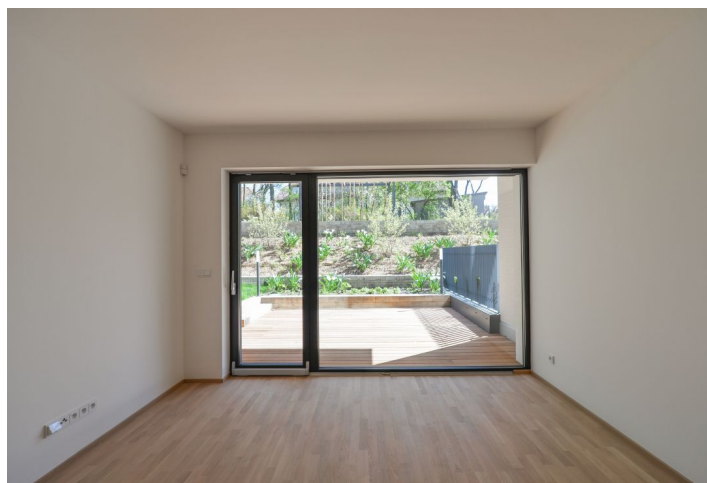
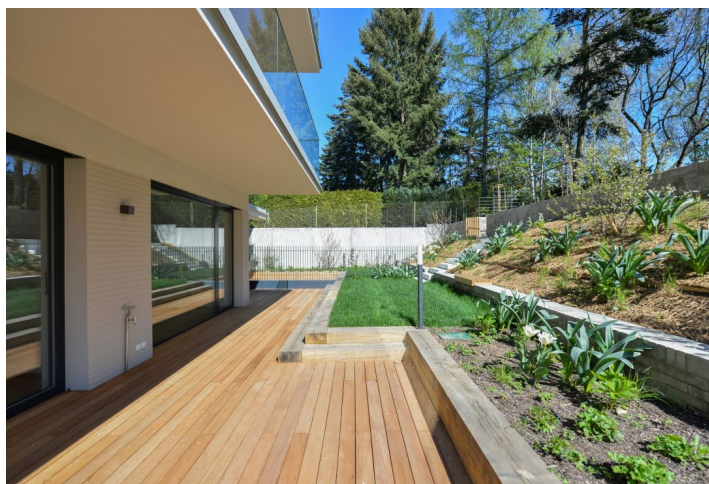




Apartment Two-bedroom (3+kk)

Sold

130 m², Prague 6, Břevnov, Na Petřínách





Apartment Two-bedroom (3+kk)

Sold130 m², Prague 6, Břevnov, Na Petřinách

| | |
|------------------|--|
| Total area | 176 m ² |
| Floor area* | 130 m ² |
| Terrace | 46 m ² |
| Garden | 29 m ² |
| Parking | Possibility to buy garage parking spot |
| Garage | Yes |
| Cellar | - |
| PENB | B |
| Reference number | 29967 |

This first-class, barrier-free apartment with a terrace and front garden is set in a newly-created villa-house **Na Petřinách 7** in the sought after area of Břevnov, Prague 6, just a short walk from Ořechovka. Excellent tram and metro connections, within fast reach of the center and the airport, urban amenities and in close proximity to greenery and sporting opportunities. The apartment has received final approval and is move-in ready.

The layout of the apartment on the ground floor consists of a **south-facing living room (40 m²)** with a kitchen and dining area, a master bedroom with en-suite bathroom, 2nd bedroom, entrance hall, 2 walk-in wardrobes, a bathroom, separate guest toilet, hall and utility room. **The living room and the bedrooms are all connected to the garden terrace.**

The feeling of airy spaciousness is enhanced by approx. **three-meter high ceilings** and large floor-to-ceiling windows. The interior includes **oak floors, underfloor heating, large-format tiles, tropical wood terraces, doors with concealed hinges**, preparation for air-conditioning, top sanitaryware, and security entrance doors (class 3). A condition of the sale of the apartment is the **purchase of two parking spaces** (price of one parking space is CZK 420,000 including VAT). Furthermore, there is a communal garden with a barbecue area, relaxation zones and a sandpit, designed by the **renowned landscape architects of Atelier Flera**.

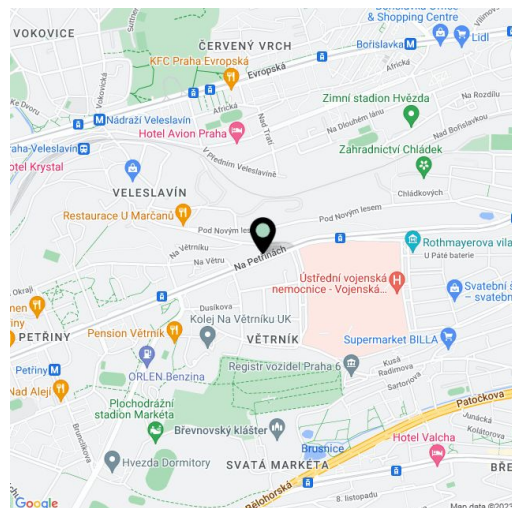
Within walking distance are **complete services** including a post office, elementary school, kindergarten and primary school, as well as a tram and metro station (line A). There is also a health center and a hospital. The nearby **Ladronka** and **Obora Hvězda** parks, **tennis courts, and a winter stadium (a few minutes' drive away), provide venues for sports & leisure.** The **Břevnov Monastery** with its attractive gardens is the perfect place for tranquil walks. Furthermore, the area has convenient shopping opportunities including small farmer's shops, bakeries, and supermarkets.

Total floor area 129.4 m², Interior 120.52 m², terrace 46.1 m², garden 29 m².

Once the project is complete, the actual area of the unit may differ from the area listed in the apartment plan.

For more information please see www.napetrinach7.cz project website.

In addition to regular property viewings, we also offer **real time video viewings** via WhatsApp, FaceTime, Messenger, Skype, and other apps.



* Area of the unit according to the Civil Code. The area consists of the sum total area of the entire unit bounded by perimeter walls.



Apartment Two-bedroom (3+kk)

Sold

130 m², Prague 6, Břevnov, Na Petřinách

svoboda&williams

CHRISTIE'S

INTERNATIONAL REAL ESTATE

01 m

2.5 m

5 m

S

NA PETŘINÁCH

BYT 3+kk

1,2

| Č. | MÍSTNOST | M² |
|-------------------|--------------------|--------|
| 01 | VSTUPNÍ HALA | 9,32 |
| 02 | ŠATNA 1 | 5,21 |
| 03 | ŠATNA 2 | 2,05 |
| 04 | KOMORA | 2,12 |
| 05 | WC | 1,74 |
| 06 | OBÝVACÍ POKOJ + KK | 40,57 |
| 07 | CHODBA | 6,34 |
| 08 | KOUPELNA 1 | 4,52 |
| 09 | LOŽNICE | 21,50 |
| 10 | KOUPELNA 2 | 3,51 |
| 11 | POKOJ | 23,64 |
| UŽITNÁ PLOCHA | | 120,52 |
| PODLAHOVÁ PLOCHA* | | 129,4 |
| TERASA | | 46,1 |
| PŘEDZAHŘÁDKA | | 29,0 |

Schéma půdorysu bytu představuje dispoziční řešení bytu, kuchyňská linka a nábytek nejsou součástí dodávky bytu, zařízení je zobrazováno pouze pro názornost. Plocha zahrady je orientační. Specifikace pro konstrukce, povrchové úpravy a rozsah vybavení je předmětem přílohy "Standard nemovitosti".

WWW.NAPETRINACH.CZ