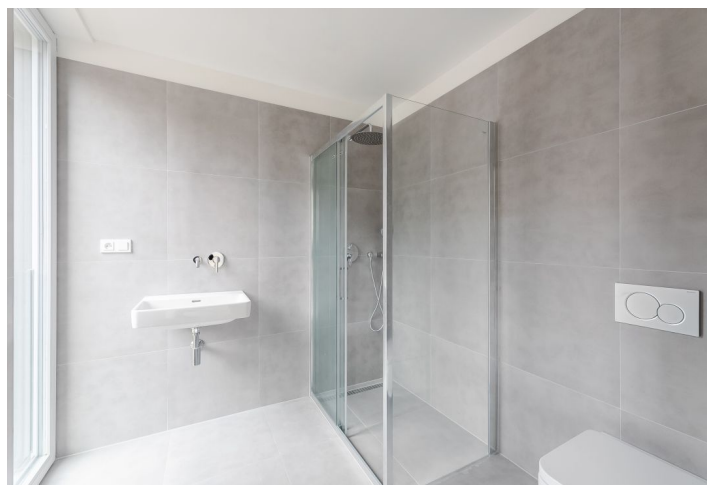




Apartment Two-bedroom (3+kk)

Sold

86 m², Prague 4, Hodkovičky, Na Lysinách





Apartment Two-bedroom (3+kk)

Sold

86 m², Prague 4, Hodkovičky, Na Lysinách

Total area	86 m²
Parking	Yes
Cellar	Yes
PENB	B
Reference number	29601

Newly built airy and bright apartment with a minimalist interior design, part of the Vila Hodkovičky boutique project, situated in a quiet residential area with a pleasant atmosphere. The project is after final approval.

The layout of the apartment on the 3rd floor features a generous southwest-facing living space with open plan kitchen and dining room, 2 bedrooms, 2 bathrooms, and a hall.

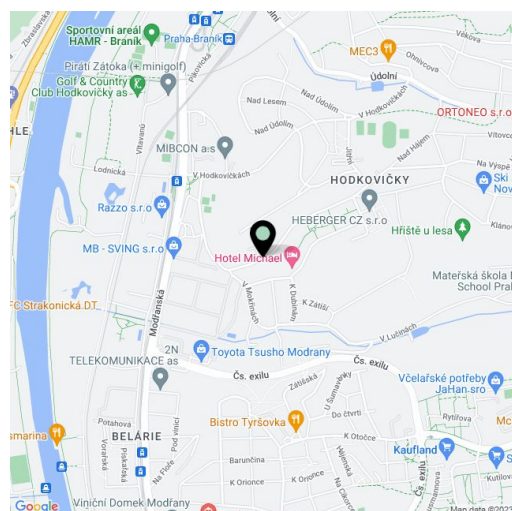
The interior will include triple glazed **floor-to-ceiling wooden windows**, bathrooms with large-format tiles, Durstone mosaic tiles, Hüppe, Laufen, and Grohe sanitary ware, **underfloor heating**, Sapeli interior doors, and security entrance doors. **Currently, the client can select the fittings and appliances, customize the layout.** A parking space with a cellar is available at an additional cost.

The villa is located in a quiet area of Prague, surrounded by dense greenery. A popular **cycling trail** along the Vltava River is close-by. Other fitness opportunities include a nearby sports center and a **golf club**. A large shopping center is within short driving distance. From the tram stop just a few minutes' walk from the villa it is a **20-minute ride to Wenceslas Square**. A bus stop and the Prague Braník train station with fast and direct connections to the **Main Railway Station** can easily be reached on foot. The Barrandov Bridge and the Prague Ring Road are easily accessible by car.

Usable area 85.77 m².

More information about the project: www.vilahodkovicky.cz

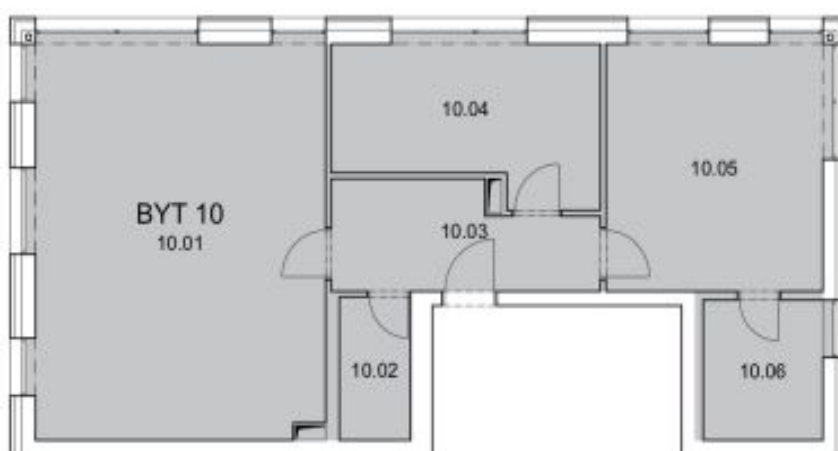
In addition to regular property viewings, we also offer **real time video viewings** via WhatsApp, FaceTime, Messenger, Skype, and other apps.



* Area of the unit according to the Civil Code. The area consists of the sum total area of the entire unit bounded by perimeter walls.



Apartment Two-bedroom (3+kk)

Sold86 m², Prague 4, Hodkovičky, Na Lysinách

M.Č.	POPIS	PLOCHA [m ²]
BYT č. 10		
10.01	Obývací pokoj + kk	37.88
10.02	Kuchyně	3.32
10.03	Chodba	8.39
10.04	Pokoj	12.72
10.05	Ložnice	18.01
10.06	Koupelna	5.45
CELKOVÁ PLOCHA MÍSTNOSTI		85.77
CELÝ BYT DLE NV 366/ 2013		88.78

Schéma objektu

