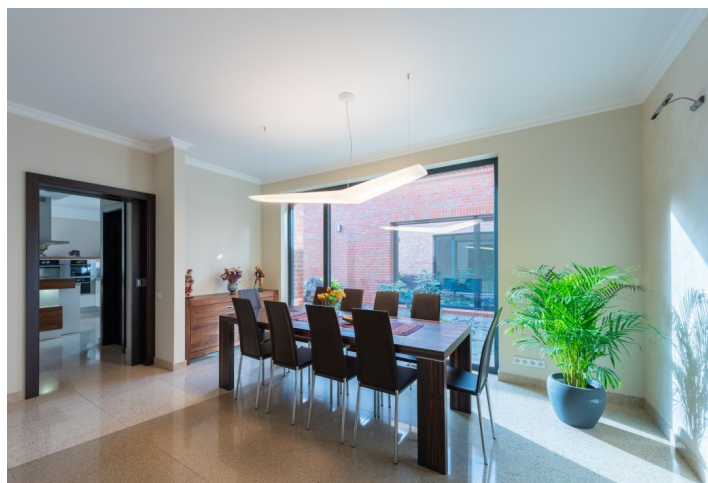
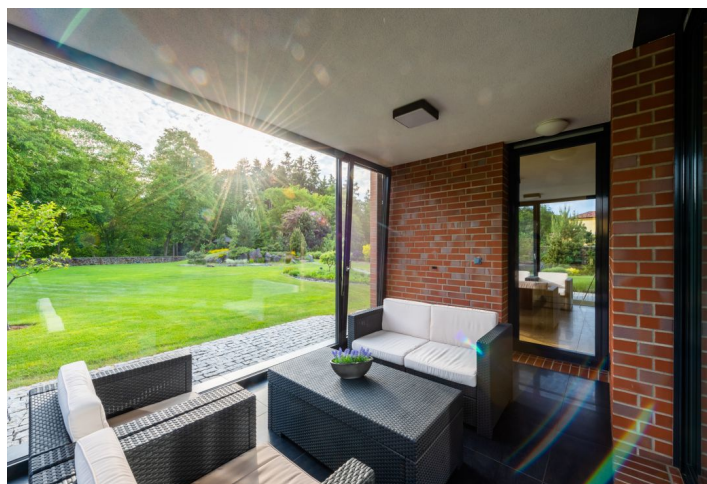




House Six-bedroom (7+kk)

865 m², Praha-západ, Jesenice

Ask for price





House Six-bedroom (7+kk)

[Ask for price](#)865 m², Praha-západ, Jesenice

Usable area	865 m ²
Plot	5 640 m ²
Foot print	429 m ²
Garden	5 211 m ²
Floor area	815 m ²
Terrace	50 m ²
Parking	Garage for 3 cars
Garage	Yes
Cellar	Yes
PENB	G
Reference number	29404

This timeless villa with an indoor pool, sauna, home cinema, and more is surrounded by a large, professionally-maintained, well-kept garden. Adjacent to the UNESCO-protected Průhonice Park, the location provides privacy and tranquillity. Apart from the access road, there is no other road leading to the plot.

The ground floor consists of a living room, a kitchen with a dining room and access to a **winter garden**, a guest bedroom, a bathroom, and a **relaxation area with a sauna and indoor pool**. There is also a foyer with access to the garage, a laundry room, and dressing rooms. Upstairs, there is a master bedroom with a terrace, a walk-in closet, and a bathroom, another 2 bedrooms (1 w/ a terrace), a large study with a private terrace, a walk-in closet, a bathroom, and a hall. In the basement, there is a **lounge with a home cinema area and billiards table**, another relaxation room/bedroom, a bathroom, storage space, and a utility room.

The interior includes **wooden floors** (American walnut, olive, and oak), large-format tiles, aluminum windows with blinds and a fully, top-of-the-line equipped kitchen. **Heating and cooling by Swedish heat pumps** (4 drills), 3 heat recovery units, and room ventilation. **Floor heating throughout the house**, including the floor around the pool. The **stainless steel pool** is equipped with **chlorine-free water treatment with active oxygen**. There is also a well and 2 retention tanks for garden irrigation. Parking in a spacious **garage for up to 3 cars**. On the plot, there is a garden house and a shed. It is possible to **purchase the neighbouring building plot of 2,211 sq. m.**

The house is situated at the end of a blind street in a **secure, enclosed residential area**. Thanks to a private entrance to Průhonice Park, waterfalls and beautiful paths are within arm's reach. A bike path is also only a short walk away. Nearby is a **kindergarten**, several playgrounds, a golf driving range, tennis courts, a beach volleyball court, and equestrian clubs. Other amenities are available in nearby Průhonice or Kunratic. Thanks to its easy connection to the Prague Ring Road or the D1 highway, the property boasts excellent transport links. The prestigious **Sunny Canadian International School** is a 5-minute drive away, while the center of Prague is about 25 minutes away.

Interior 760.04 m², terrace 34.04 m², 9.10 m² and 6.84 m², garage 54.98 m², built-up area 429 m², garden 3,000 m², plot 3,429 m².

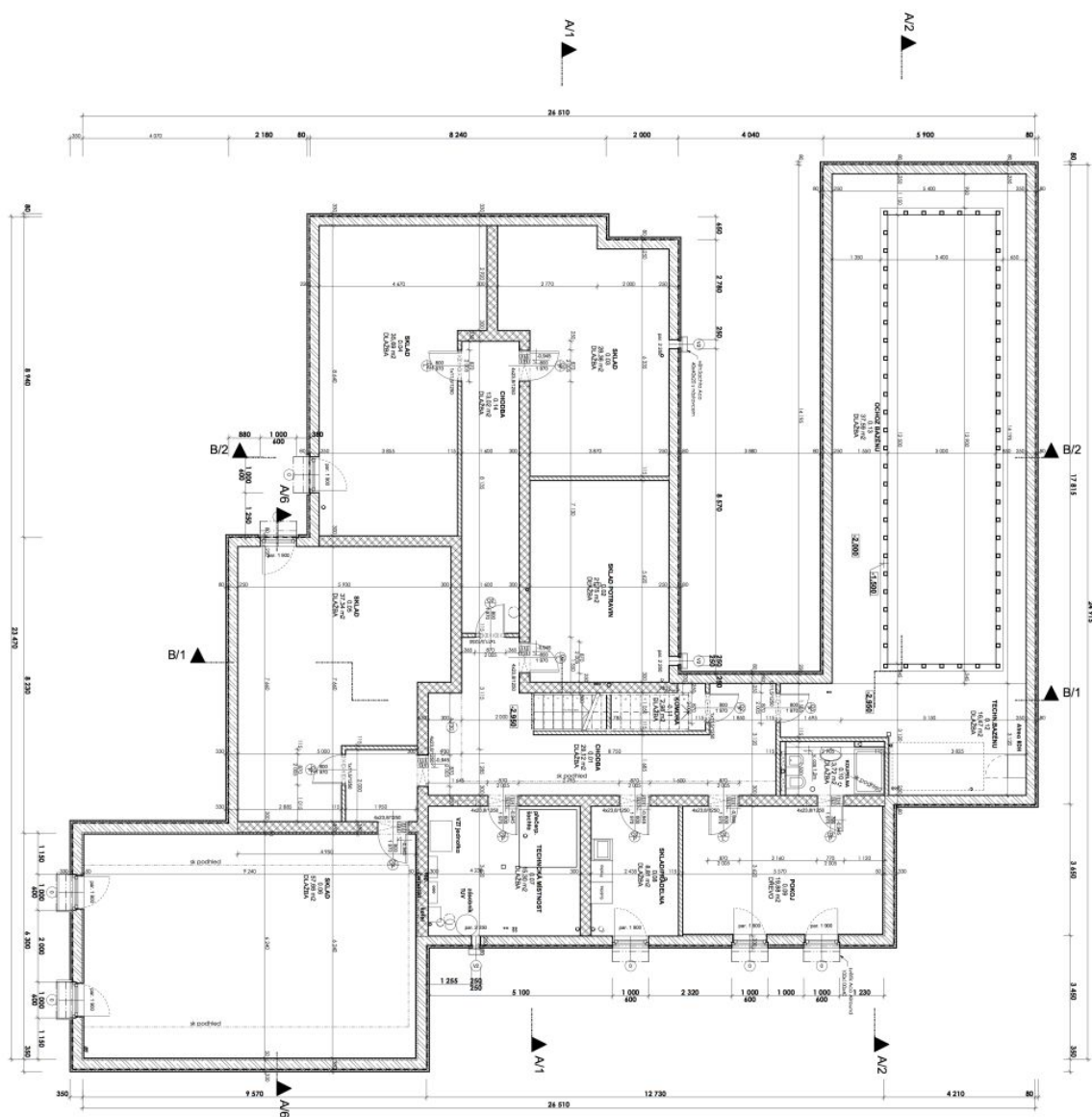
In addition to regular property viewings, we also offer **real time video viewings** via WhatsApp, FaceTime, Messenger, Skype, and other apps.



House Six-bedroom (7+kk)

865 m², Praha-západ, Jesenice

Ask for price

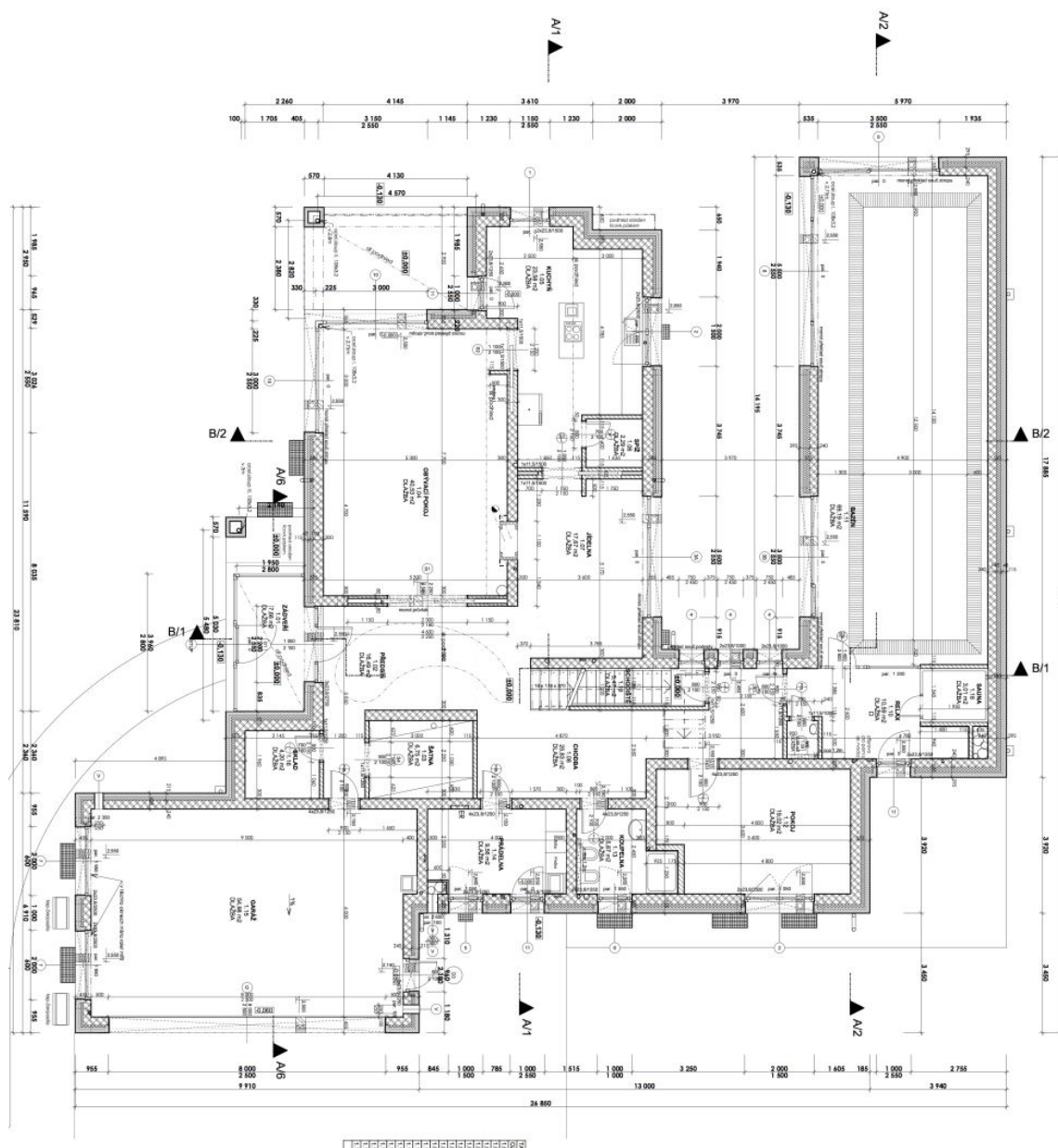




House Six-bedroom (7+kk)

Ask for price

865 m², Praha-západ, Jesenice





House Six-bedroom (7+kk)

865 m², Praha-západ, Jesenice

Ask for price

