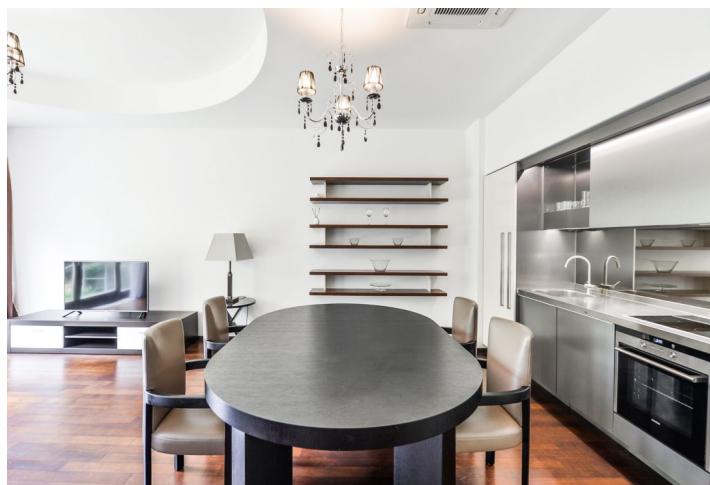
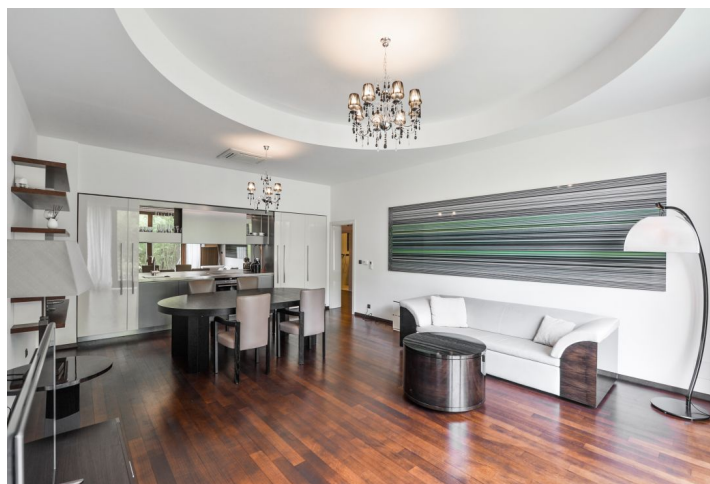




## Apartment One-bedroom (2+kk)

€ 1 435 | CZK 36 000

87 m², Prague 6, Bubeneč, Mlýnská





# Apartment One-bedroom (2+kk)

€ 1 435 | CZK 36 000

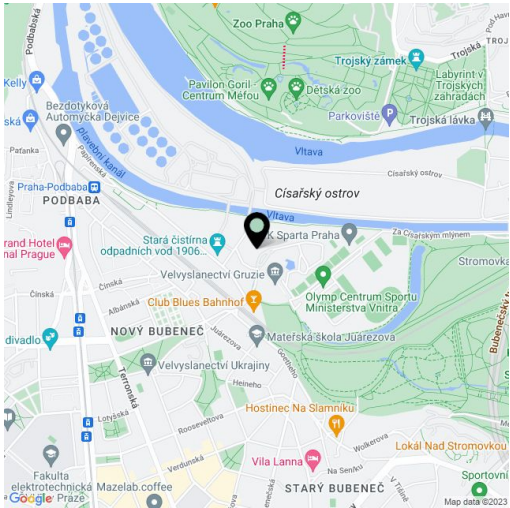
87 m², Prague 6, Bubeneč, Mlýnská

Total area	87 m²
Garden	85 m²
Parking	Garage parking.
Garage	Yes
Cellar	-
PENB	G
Reference number	29128
Available from	Immediately

Fully furnished in ARMANI style, this 1-bedroom flat with an 85 m² garden and beautiful green views is situated on the first floor of a modernized residence with a lift, security, landscaped garden and underground parking. The fully reconstructed Renaissance building includes a cloister used as a lounge and meeting room. Located in a quiet romantic area in the prestigious Bubeneč neighborhood, right next to the lovely Stromovka Park, a few minutes from the Vltava riverbank, with great sports and relaxation opportunities, and with quick connection to the city center - two bus stops from Hradčanská metro with full amenities in the area.

The interior features a living room with a fully fitted open kitchen and garden access, one bedroom, bathroom with bathtub and toilet, a guest toilet, two fitted walk-in closets, and a spacious entrance hall.

Top quality materials and furnishings, green views, air-conditioning, high ceilings, hardwood floors, mosaic tiling, security entry door, French windows, dishwasher, induction cooktop, basic kitchenware, video entry phone, TV, camera system and night manned security in the building. One on-site underground garage parking space available at CZK 2000/ month + VAT. Service charges included in the rent. Utilities are billed separately. Short term rental available at a higher rent (min. of three months).



\* Area of the unit according to the Civil Code. The area consists of the sum total area of the entire unit bounded by perimeter walls.