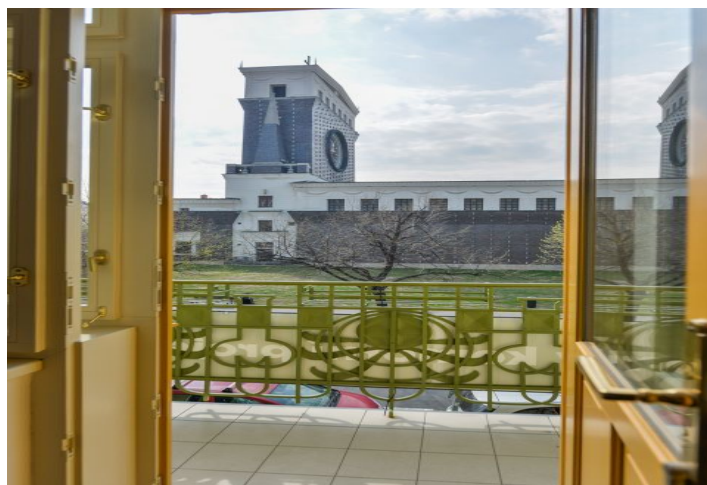




## Apartment Three-bedroom (4+kk)

Rented

166 m<sup>2</sup>, Prague 3, Vinohrady, Laubova





# Apartment Three-bedroom (4+kk)

Rented

166 m², Prague 3, Vinohrady, Laubova

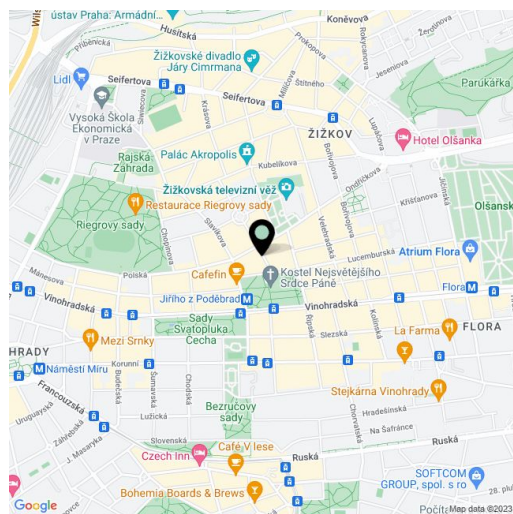
Total area	170 m²
Floor area*	166 m²
Balcony	4 m²
Parking	One parking space located 350m from the building is included in the rent.
Garage	Yes
Cellar	Yes
Service price	Common building charges: EUR 125/person/month. Monthly deposit for water and heating CZK 10,000. Electricity will be transferred to the tenant.
PENB	G
Reference number	28838
Available from	Immediately

Boasting views of the Jiřího z Poděbrad Square and the unique modern Church Of The Most Sacred Heart Of Our Lord, this is an attractive air-conditioned unfurnished 3-bedroom 2-bathroom flat. Situated on the first floor of a completely refurbished Art-Nouveau building with a lift and preserved original features. Conveniently located in the popular Vinohrady residential area at Jiřího z Poděbrad Square with metro station and tram links, with full amenities within easy reach.

The interior of this corner flat includes a spacious living room with a fully fitted open kitchen and a dining area with access to the balcony, a master bedroom with a walk-in closet and a fully equipped en-suite bathroom with a bathtub, a shower and a toilet, two bedrooms (one with a balcony), a bathroom with a shower, a toilet and a bidet, and an entrance hall.

High standard materials and finishes, large windows, solid wood parquet floors, tiles, security entry door, built-in wardrobes, gas boiler, high quality appliances incl. a washer / dryer, plenty of storage space, cellar.

Unfurnished, can be furnished at a higher rent. One parking space located 350m from the building is included in the rent. Available from mid June 2023.



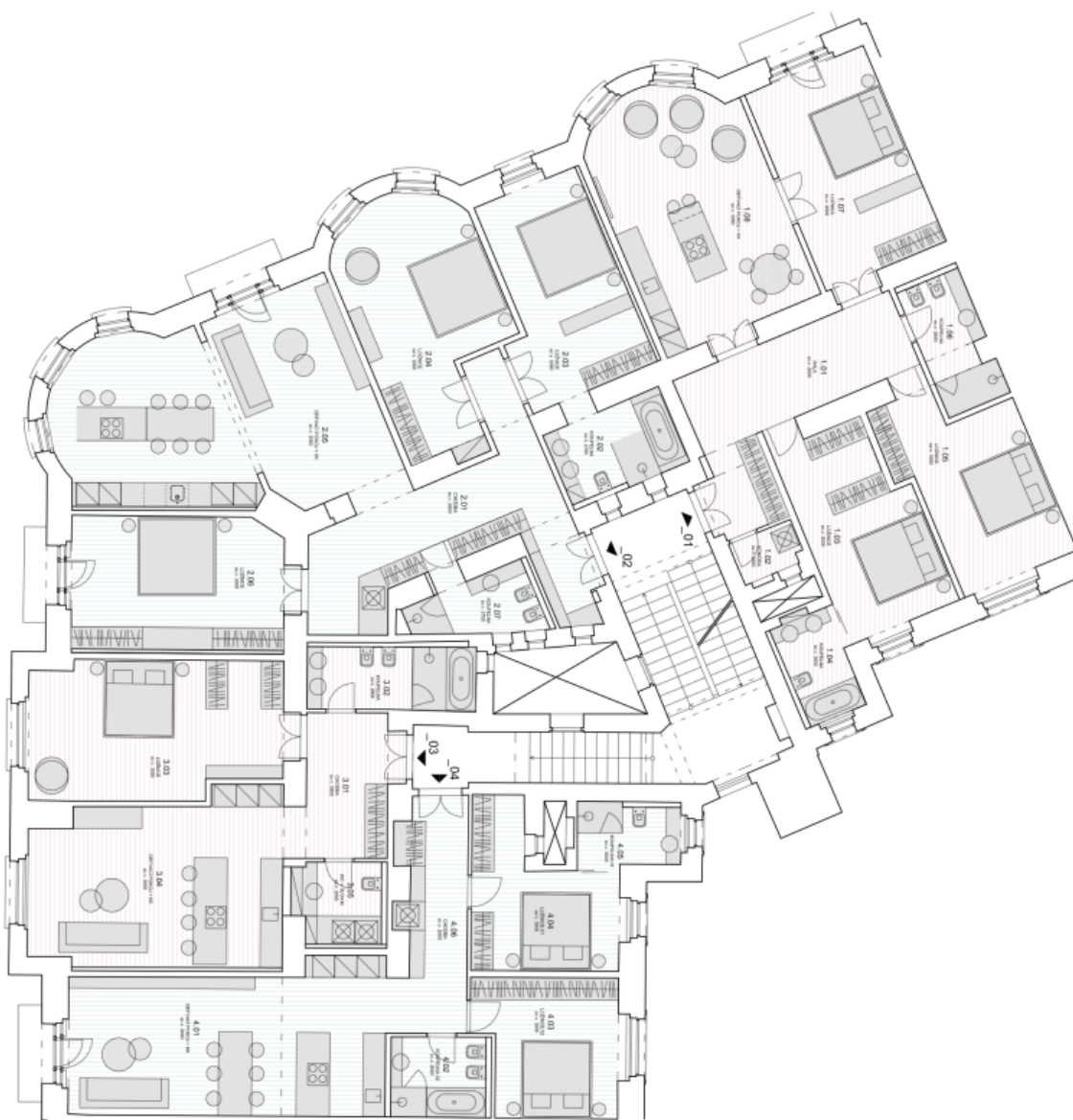
\* Area of the unit according to the Civil Code. The area consists of the sum total area of the entire unit bounded by perimeter walls.



# Apartment Three-bedroom (4+kk)

166 m², Prague 3, Vinohrady, Laubova

Rented



byl 01, 4+kk

TABULKA MÍSTNOSTÍ	
Č. M.	PLOCHA m²
1.01	16.4
1.02	16.4
1.03	16.4
1.04	16.4
1.05	16.4
1.06	16.4
1.07	16.4
1.08	16.4
CELKOVÁ	134.8

byl 02, 4+kk

TABULKA MÍSTNOSTÍ	
Č. M.	PLOCHA m²
2.01	27.7
2.02	27.7
2.03	27.7
2.04	27.7
2.05	27.7
2.06	27.7
2.07	27.7
CELKOVÁ	188.5

byl 03, 2+kk

TABULKA MÍSTNOSTÍ	
Č. M.	PLOCHA m²
3.01	10.7
3.02	10.7
3.03	10.7
3.04	10.7
CELKOVÁ	42.8

byl 04, 3+kk

TABULKA MÍSTNOSTÍ	
Č. M.	PLOCHA m²
4.01	20.3
4.02	20.3
4.03	20.3
4.04	20.3
4.05	20.3
4.06	20.3
CELKOVÁ	121.8