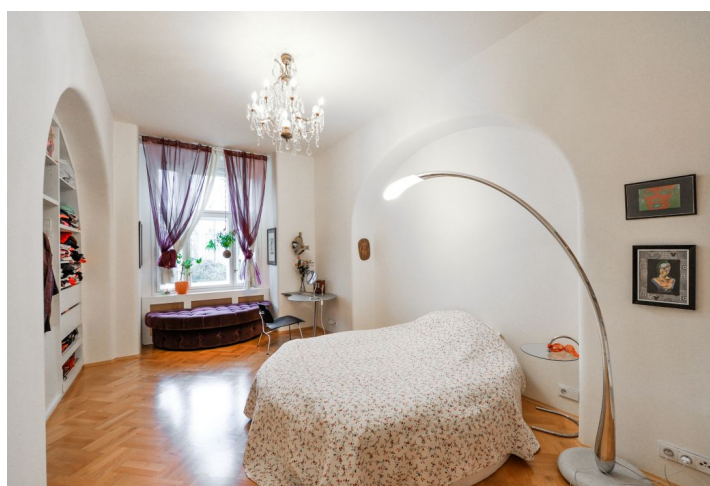




Apartment Two-bedroom (3+kk)

Sold

125 m², Prague 6, Hradčany, K Brusce





Apartment Two-bedroom (3+kk)

Sold

125 m², Prague 6, Hradčany, K Brusce

Total area	125 m²
Parking	-
Cellar	Yes
PENB	G
Reference number	27647

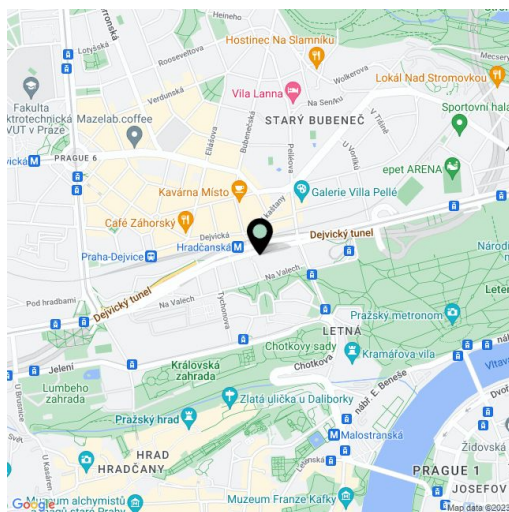
Carefully renovated apartment with preserved original features situated on the first floor of an apartment building on a quiet street in a unique historic location. An attractive and popular place with the Hradčanská metro station just a few steps from the house.

The interior consists of a **spacious living room with a kitchen** and a dining area, which is illuminated by **large casement windows** facing a quiet street, 2 bedrooms with green courtyard views, and 2 bathrooms w/ bathtubs and showers.

The apartment includes high ceilings, preserved original features and several solitary pieces of design furniture, **wooden parquet flooring** and electric wooden shutters. There is also an intelligent household system that controls lighting, heating, blinds and alarm.

The house adjoins Na Valech street in quiet location near Letenske and Chotkovy Orchards and offers a quick connection to the center, within reach of all services including **cosy cafes, restaurants and public transport**.

Interior 125 m².



* Area of the unit according to the Civil Code. The area consists of the sum total area of the entire unit bounded by perimeter walls.



Apartment Two-bedroom (3+kk)

125 m², Prague 6, Hradčany, K Brusce

Sold

