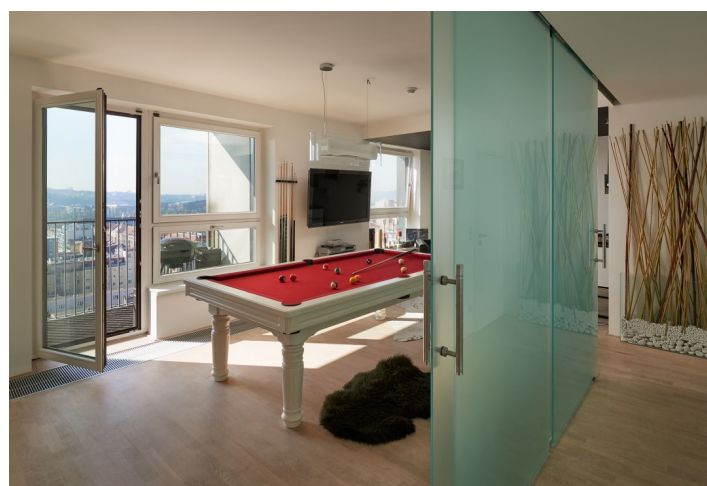
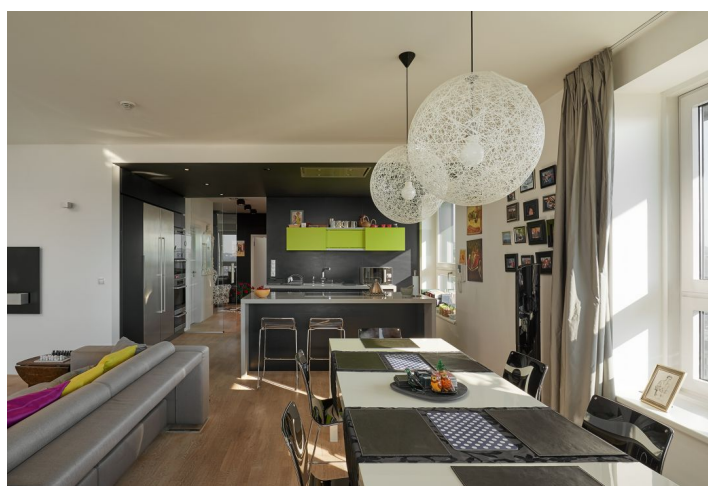




## Apartment Four-bedroom (5+kk)

**Sold**

156 m², Prague 7, Holešovice, U Uranie





## Apartment Four-bedroom (5+kk)

**Sold**

156 m², Prague 7, Holešovice, U Uranie

Total area	184 m²
Floor area*	156 m²
Terrace	28 m²
Parking	2 parking spaces
Garage	Yes
Cellar	Yes
Service price	8 750 CZK monthly
PENB	G
Reference number	26835

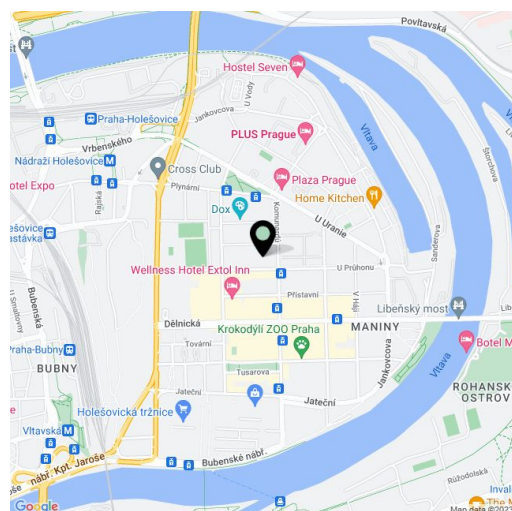
**Beautiful penthouse with interior design by renowned architects, with a unique view from the sixteenth floor of a residential tower, part of the award-winning Holešovice Brewery project.**

From the entrance hall of the apartment the doors lead to a **guest bedroom**, **study**, bathroom and a **kitchen** with dining area connected to an airy **living room**, bordered on both sides by a **terrace of 28 m²**. Adjacent to the living room there is a **billiard room** with a built-in bar behind a glass sliding door. From the corridor the next door opens into a **bedroom** with an **en-suite bathroom and walk-in closet**. The apartment also has a **pantry** next to the kitchen.

The interior is designed by the **OOOOX architects**. The floors in the living areas are light **wood parquet**. The kitchen with an island is equipped with a **Miele** induction ceramic hob and a stainless steel fridge with a **Gaggenau** freezer. In the billiard room there is a **Liebherr wine cooler**. The bathroom adjacent to the bedroom has a bathtub and waterproof built-in TV connected to a DVD player. The bedrooms offer built-in wardrobes, one with a bookcase extending to the ceiling. Equipment includes fire detectors, motion detector alarm, cable distribution in the walls for a sound system and a 2.5-meter roof satellite. The apartment has **two parking spaces** in the underground garage and a **cellar**.

The apartment is located in the Tower Residence area of **CMC architects's Holešovice Brewery**, which won **Best of Realty 2009** and **Best Residential Project of the Year 2009**. All amenities in the area: restaurants, shops, pharmacies, schools, kindergartens, playgrounds. Nearby is a **golf course**. Within walking distance are the tram stops **U Průhonu** and **Maniny - the Vltavská metro station (line C)** is 5 minutes by tram, **Palmovka metro station (line B)** 4 minutes.

Interior 156 m², terrace 28 m².



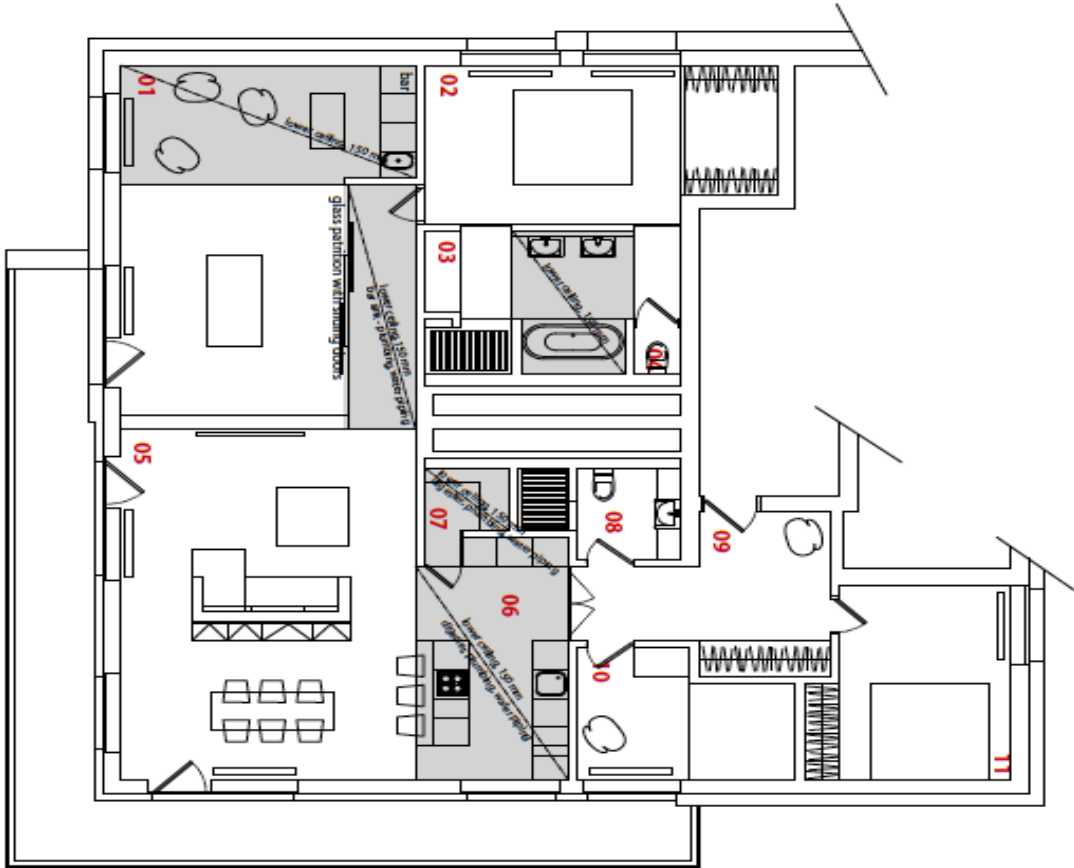
\* Area of the unit according to the Civil Code. The area consists of the sum total area of the entire unit bounded by perimeter walls.



Apartment Four-bedroom (5+kk)

156 m², Prague 7, Holešovice, U Uranie

Sold



- 01
- snooker's room
- 02
- bedroom
- 03
- bathroom
- 04
- toilet
- 05
- living room
- 06
- kitchen / dining room
- 07
- storage
- 08
- bathroom
- 09
- entrance hall
- 10
- guest room
- 11
- guest room