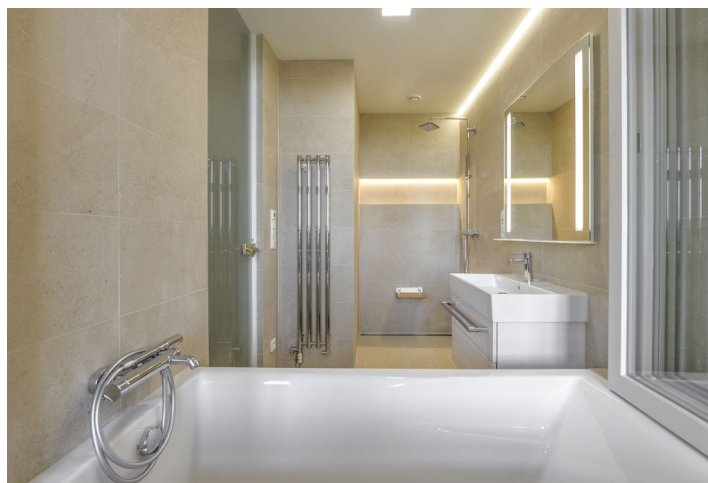




## Apartment One-bedroom (2+kk)

Rented

95 m<sup>2</sup>, Prague 5, Smíchov, Janáčkovo nábreží





## Apartment One-bedroom (2+kk)

**Rented**

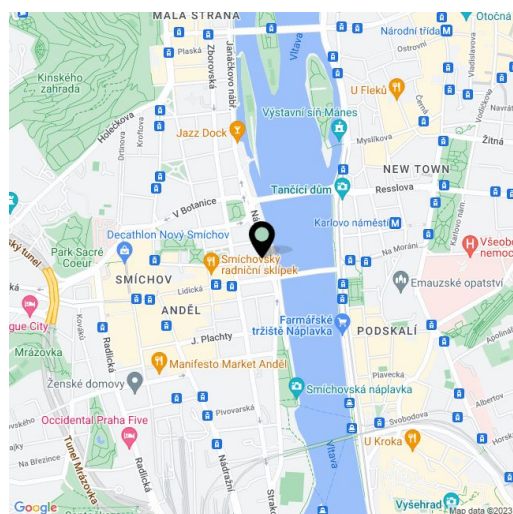
95 m², Prague 5, Smíchov, Janáčkovo nábřeží

Total area	95 m²
Parking	-
Cellar	Yes
PENB	G
Reference number	26281
Available from	Immediately

Boasting a wonderful location on the Vltava riverbank and views of the river, Vyšehrad Castle, Mánes Gallery and the Dancing building, this is a high quality newly completely refurbished 1-bedroom flat with preserved original details. Situated on the fourth floor of a traditional residential building with no lift, centrally located within walking distance of Malá Strana, the Kampa Island and the Old Town. Quick access to the Prague Castle, Anděl commercial center and metro station, and the French School.

The interior features a corner living room with dining area and a fully fitted open kitchen, one bedroom with built-in storage, bathroom (walk-in shower, bathtub) with a large window that can be opened into the bedroom, a separate toilet with bidet shower, walk-in closet with laundry area, and entrance hall with built-in wardrobes and storage.

High ceilings, oak floors, tiles, security entry door, gas boiler, washing machine, dryer, dishwasher, wine fridge, alarm cellar, storage room next to the flat. No lift. Common building charges and deposit for utilities CZK 4000 per month. Available from January 2019.



\* Area of the unit according to the Civil Code. The area consists of the sum total area of the entire unit bounded by perimeter walls.