



## Apartment One-bedroom (2+kk)

Sold

67.9 m², Prague 6, Dejvice, Wuchterlova





## Apartment One-bedroom (2+kk)

**Sold**

67.9 m², Prague 6, Dejvice, Wuchterlova

Total area	68 m²
Parking	-
Cellar	-
PENB	G
Reference number	25911

This one-bedroom split-level apartment is situated on the 5th floor of a well maintained residential building without an elevator, located in a popular residential area just a few minutes' walk from the Prague Castle, a metro station, and tram stops with quick connections to the city center and to the airport.

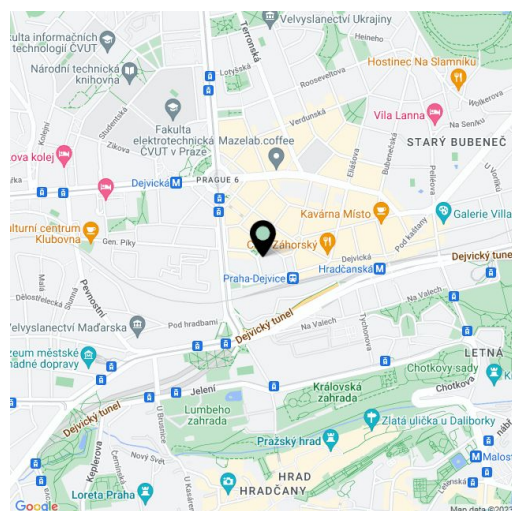
The lower level consists of a **40-meter living room** with a kitchen and dining area, a foyer, a separate toilet, and a closet. From the living area, a staircase leads to the upper level, where you will find a bedroom with an en-suite bathroom.

The apartment **has just been completed** and boasts new floating floors, plaster walls, sanitary ware, and a kitchen unit. There are also new wooden skylights. Heating is by a Vaillant gas boiler. The corner building is nicely maintained, and while there is no elevator, plans for its installation have been drawn up.

The building is located in a **popular residential area** with many well-liked restaurants and cafes, a university campus, and quick connections to the city center from the nearby Dejvická and Hradčanská metro stations and tram stops. The **Prague Castle** is a 15-minute walk away, and there are several **parks** nearby. A popular **farmers' market** is regularly held on Vítězné Square.

Interior 67.9 m².

In addition to regular property viewings, we also offer real-time video viewings via WhatsApp, FaceTime, Messenger, Skype, and other apps.



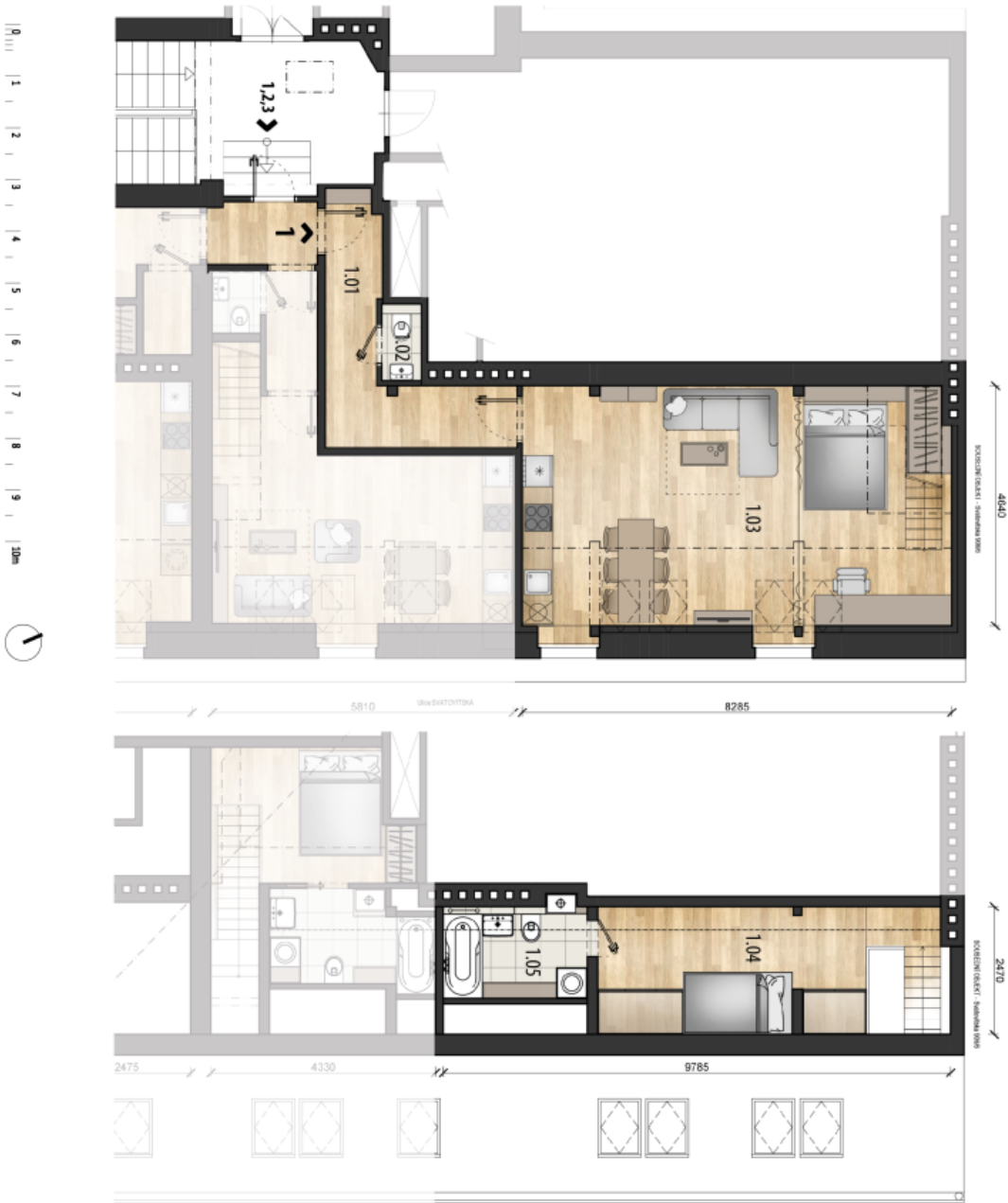
\* Area of the unit according to the Civil Code. The area consists of the sum total area of the entire unit bounded by perimeter walls.



Apartment One-bedroom (2+kk)

67.9 m², Prague 6, Dejvice, Wuchterlova

Sold



WUCHTERLOVA 11

BYTOVÁ JEDNOTKA

ČÍSLO BYTU  
PODLAŽÍ  
DISPOZICE

1  
6.-7.NP  
1+KK

TABULKA MÍSTNOSTI

1.01 CHODBA	8,7 m²
1.02 TOILETA	1,2 m²
1.03 OBÝVACÍ PROSTOR S KUCH. KOUTEM	38,3 m²
1.04 SÁLNA	12,8 m²
1.05 KOPELNA	5,6 m²
CELKOVÁ OBÝVACÍ PLOCHA	66,6 m²

SPOLÉČNÁ CHODBA – PODIL 47%

1,3 m²

CELKOVÁ PODLAŽNÍ PLOCHA

67,9 m²

!  
Technická příloha je dle přílohy a slouží k objasnění  
podrobnosti všech místností jednotky včetně všech vnitřních  
komunikací a energetických technických údajů a výkresů