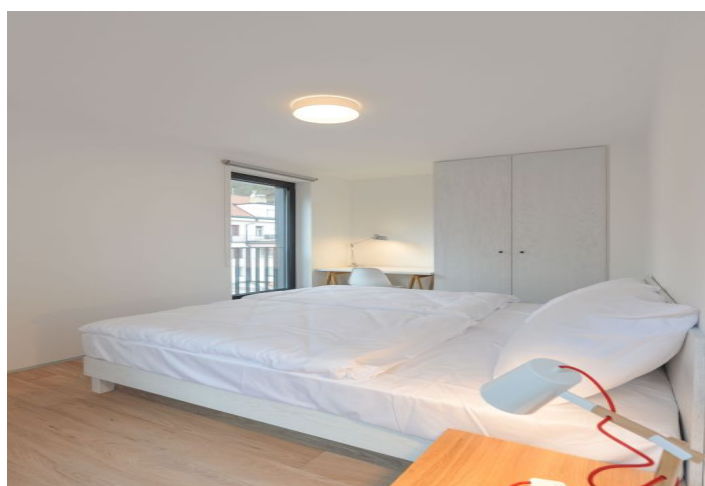




## Apartment One-bedroom (2+kk)

€ 992 | CZK 24 500

36 m², Prague 6, Dejvice, V Šáreckém údolí





# Apartment One-bedroom (2+kk)

€ 992 | CZK 24 500

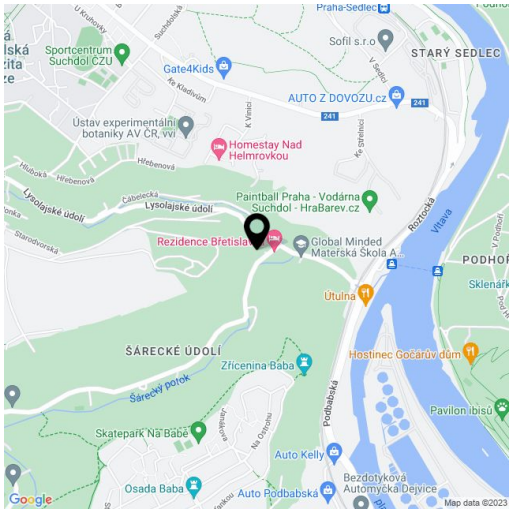
36 m², Prague 6, Dejvice, V Šáreckém údolí

Total area	36 m²
Parking	Garage parking included.
Garage	Yes
Cellar	-
Service price	Utilities are billed separately (gas, water, electricity).
PENB	G
Reference number	25102
Available from	15.07.2024

This fully furnished apartment with beautiful green views is on the 1st floor of the Břetislavka residential project (bretislavka.cz) designed by the m4 architekti studio, with superb services, garage parking, and a landscaped garden on the edge of a brook. Located in the charming Šárecké Valley surrounded by green hills and a peaceful countryside, with quick connections to the city center, the airport, and international schools. Just a few bus stops to the Dejvická metro station with full amenities in the area. Project amenities include an elevator, 24/7 security, an online reception desk, catering services provided by the adjacent restaurant, a bike rental, barbecue, guide to Prague cultural venues, and more.

The interior features a living room with a fully fitted open plan kitchen and study area, one bedroom, a shower bathroom with a toilet, and an entrance hall.

Garden views, intelligent home control system, alarm, vinyl floors, floor heating, security entry door, built-in wardrobes and storage, roller blinds, TV, washer, dishwasher, combination microwave oven, basic dishes and kitchenware, fold-out futon sofa bed, bed linen, and towels. The rent includes common building charges, Internet, security, and weekly cleaning and changing of bed linen and towels. Medium and long-term rental terms available (from three months). No commission.



\* Area of the unit according to the Civil Code. The area consists of the sum total area of the entire unit bounded by perimeter walls.