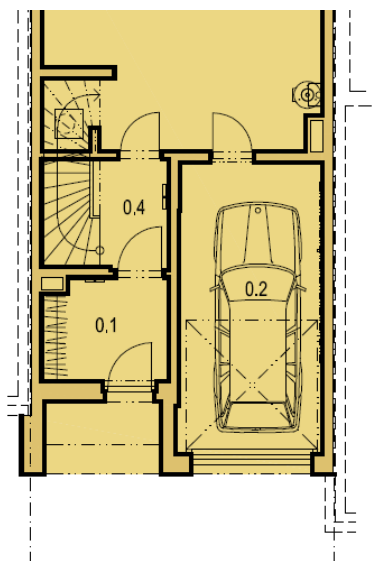




House Four-bedroom (5+kk)

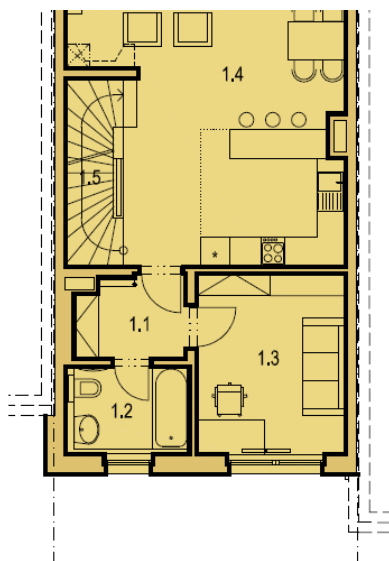
€ 285 835 | CZK 7 153 025

184 m², Prague 9, Horní Počernice



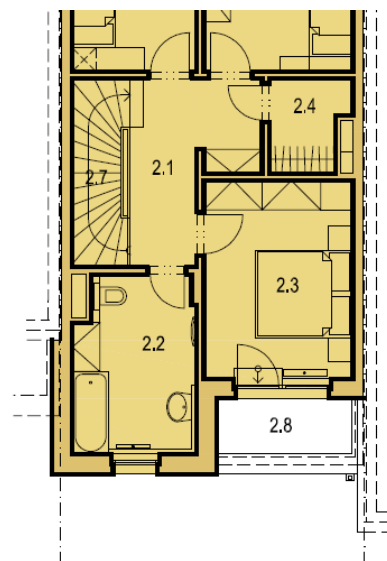
Tabulka místností - 1.PP

0.1 0.4 0.2



Tabulka místností - 1.NP

1.1 1.2 1.3 1.4 1.5



Tabulka místností - 2.NP

2.1 2.2 2.3 2.4 2.7 2.8



House Four-bedroom (5+kk)

€ 285 835 | CZK 7 153 025

184 m², Prague 9, Horní Počernice

Plot	197 m ²
Foot print	78 m ²
Garden	119 m ²
Parking	Garage for 1 car
Garage	Yes
Cellar	-
PENB	B
Reference number	24684

Four-bedroom terraced house is part of a newly emerging project located in a quiet and popular residential area of Horní Počernice. The houses are characterized by practically designed layouts, attractive architecture and a wide selection of different variants of completion according to the client.

The basement will comprise the entrance hall, garage and hobby room. The ground floor will offer a living room with kitchen and entrance to the garden, and a master bedroom with private walk-in closet and bathroom. On the first floor will be 3 bedrooms (one of them with terrace), bathroom with toilet, cloakroom, and a staircase hall.

Future owners will be able to choose from different shades of **quality laminate floating floors, large format tiles** and veneered interior doors. In bathrooms will be Kaldewei, **Grohe**, Vitra or IdealStandard sanitary ware and fixtures. **Above-standard adjustments may also be realized, including for example an elevator, a fireplace, or a wheelchair accessible interior.**

The location offers good access to downtown and complete civic amenities within easy reach. Nearby are kindergartens, schools, high school, shops, sports center, theater, and a general practitioner. Within the development there will be a new and safe playground, other outdoor activities are allowed by an adjacent cycling path connecting to Klánovický forest. Nearby you can also find ponds, Pevnost Hummer entertainment area or the Golf Resort Black Bridge golf course.

Completion scheduled for Q4 2017.

For a complete list of available houses, please contact our office.

Usable area 183.5 m², built-up area 78.3 m², garden 118.7 m², plot 197 m².