



## House Six-bedroom (7+1)

293 m², Vsetín, Valašské Meziříčí, Podlesí

Ask for price





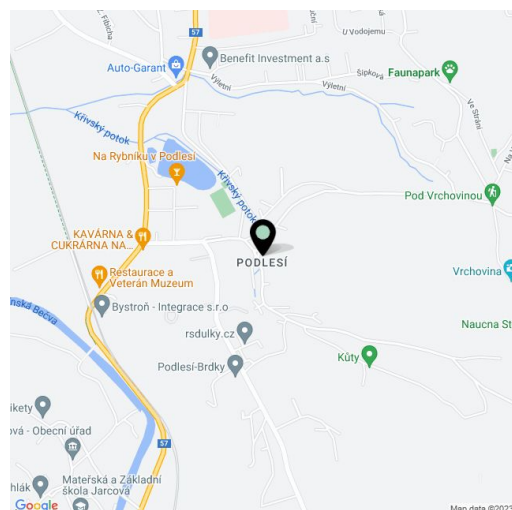


## House Six-bedroom (7+1)

293 m², Vsetín, Valašské Meziříčí, Podlesí

[Ask for price](#)

Plot	3 250 m²
Foot print	147 m²
Garden	3 103 m²
Parking	Garage for 2 cars
Garage	Yes
Cellar	-
PENB	B
Reference number	23538



Enviably set in a beautiful area of Beskydy nature preserve is this outstanding, uniquely presented family house built in a contemporary Scandinavian style combining elegant and clean interior design with a touch of modern vintage. This exceptional property boasts stunning panoramic views of the surrounding countryside and a pleasant setting with mountain chalets, yet within easy reach of all amenities. Located only 2 km from Valašské Meziříčí, 50 km from Zlín and 120 km from Brno.

The ground floor comprises a living room with bay window and fireplace, fully equipped modern kitchen, dining room, bedroom, bathroom with infrared sauna and shower, separate toilet, utility room and hallway with built-in wardrobes. The first floor consists of a second living room, 2 west-oriented bedrooms, east-facing master bedroom and bathroom with bathtub, shower, toilet and bidet. Additional space available in fully walkable attic. All ground floor rooms have access to the terrace, bedrooms upstairs have private or shared balconies.

Behind the house, which is built on a sunny southern slope, there is a terrace with 6x3m covered **outdoor pool** with salt water system. Garden with fruit trees is adjacent to the forest on the northern side. Under the house is a **garage for two cars** and a workshop.

Equipped with **NunnaUuni ecological fireplace made of steatite with great heat accumulation abilities (up to 48 hours)**, Italian tiles, high quality wooden flooring, underfloor heating throughout the house provided by **IVT heat pump** (130 m drill hole), wooden windows and made-to-measure doors with lining, crystal chandeliers, outdoor decorative lighting. The house is made of laminated logs with wool insulation (organic coatings suitable for allergy sufferers used only).

Ornamental garden around the house, remote controlled gate, sandstone driveway. High level of security including garage and possibility to encode each floor of the house separately. The slope is drained and reinforced with a retaining wall.

Beautiful location providing **absolute peace and privacy**, with numerous opportunities for relaxation and sports. Valašské Meziříčí offers all services, including kindergartens, schools, shops, hospital, restaurants and a golf club. In nearby Rožnov pod Radhoštěm you can find a number of attractions such as a historic museum, Pustevny mountain saddle, or a golf course. In winter you can make use of the Horní Bečva, Karolínka or Velké Karlovice ski resorts.

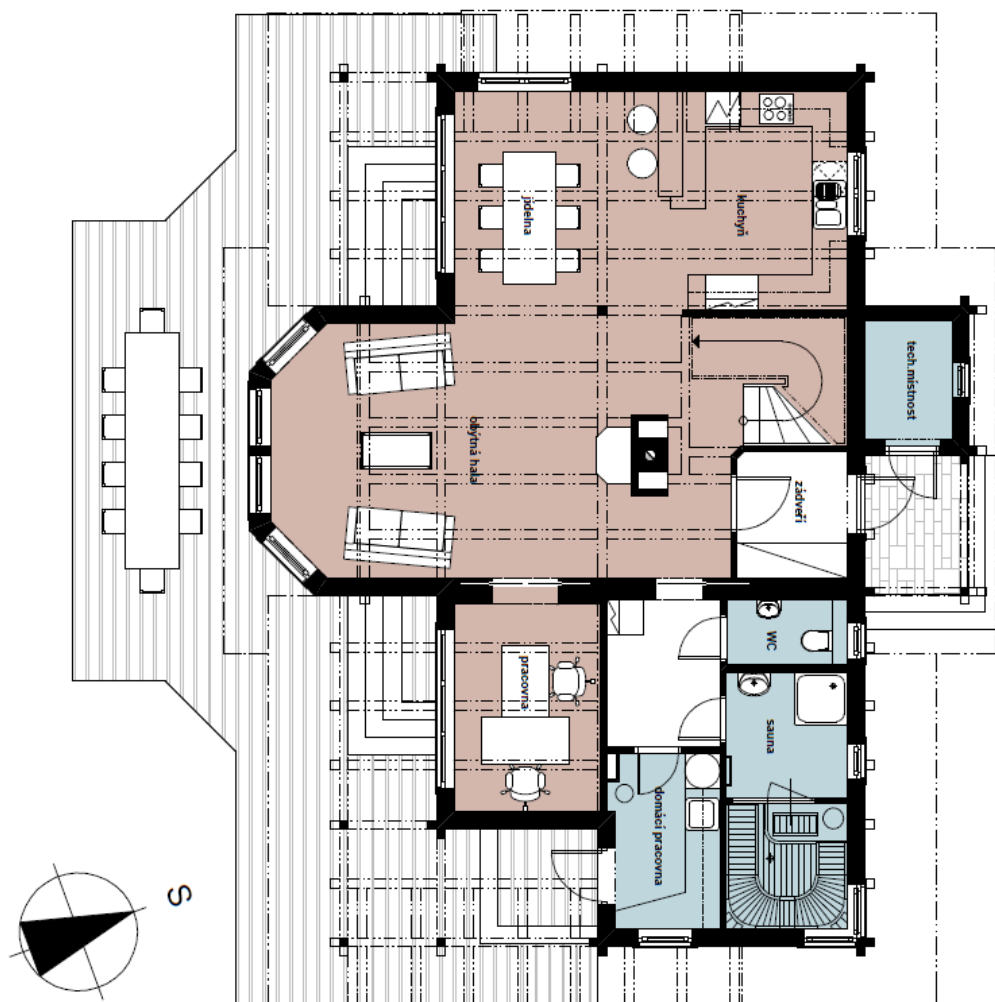
Usable area 293 m², living area 200 m², built-up area 147 m², garden 3 103 m², plot 3 250 m²



## House Six-bedroom (7+1)

293 m², Vsetín, Valašské Meziříčí, Podlesí

Ask for price





## House Six-bedroom (7+1)

293 m², Vsetín, Valašské Meziříčí, Podlesí

Ask for price

