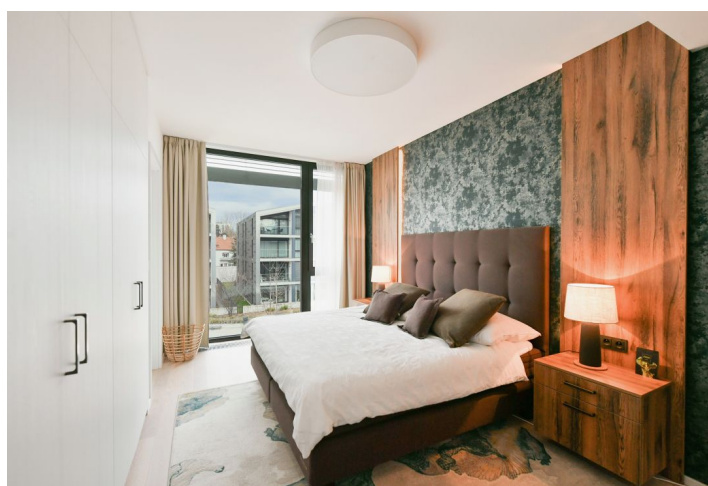
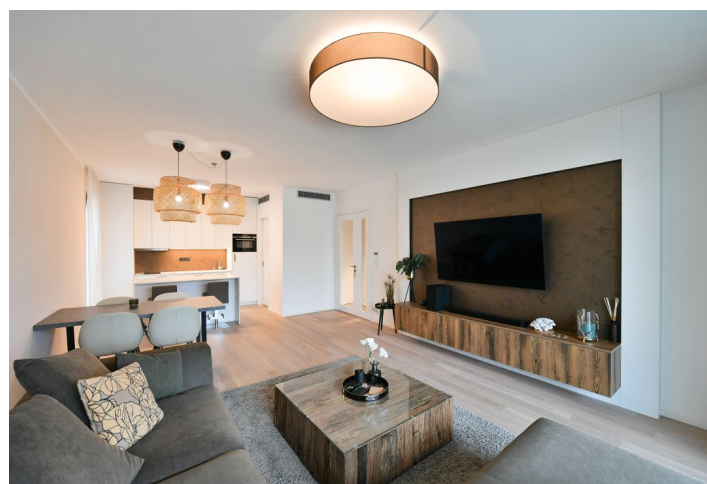




Apartment One-bedroom (2+kk)

Rented

81.4 m², Prague 6, Vokovice, Ke dvoru





Apartment One-bedroom (2+kk)

Rented

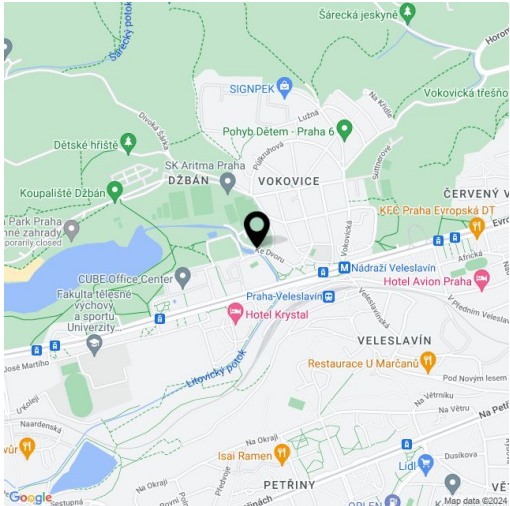
81.4 m², Prague 6, Vokovice, Ke dvoru

Total area	89 m²
Floor area*	81 m²
Terrace	8 m²
Parking	Garage parking.
Garage	Yes
Cellar	-
Service price	Monthly deposit for service charges, water and heating: CZK 7,000 . Electricity is billed separately.
Reference number	104381
Available from	Immediately

This fully furnished air-conditioned 1-bedroom apartment with a terrace is on the third floor of the contemporary Šárecký dvůr residential project that uniquely combines modern architecture with the elegant historic style of the preserved original features. The gated complex offers a 24/7 reception, underground parking, CCTV and a beautifully landscaped private park. Lovely location with complete amenities, greenery and close vicinity of the city centre and the airport, close to the Džbán water reservoir and Divoká Šárka nature reserve. Veleslavín metro station is only a few min. walk away, and the Václav Havel Airport in Ruzyně can be reached in just ten minutes by car or bus. Ideal location for active lifestyle, with opportunities for long walks and cycling, tennis courts, fitness center, and a golf club and driving range.

The apartment includes a living room with a fully fitted open plan kitchen and a terrace overlooking the courtyard, a bedroom with built-in wardrobes and an en-suite bathroom (bathtub, toilet, underfloor heating), a pantry / utility room, a guest toilet, and an entrance hall with built-in wardrobes.

Air-conditioning, high standard equipment, hardwood floors, tiles, security entry door, French windows, automatic exterior blinds, central heating, Miele washer and dryer, dishwasher, induction stove top, TV, sound system / home cinema, video entry phone, chip entry to the building, lift. A garage parking space is included.



* Area of the unit according to the Civil Code. The area consists of the sum total area of the entire unit bounded by perimeter walls.