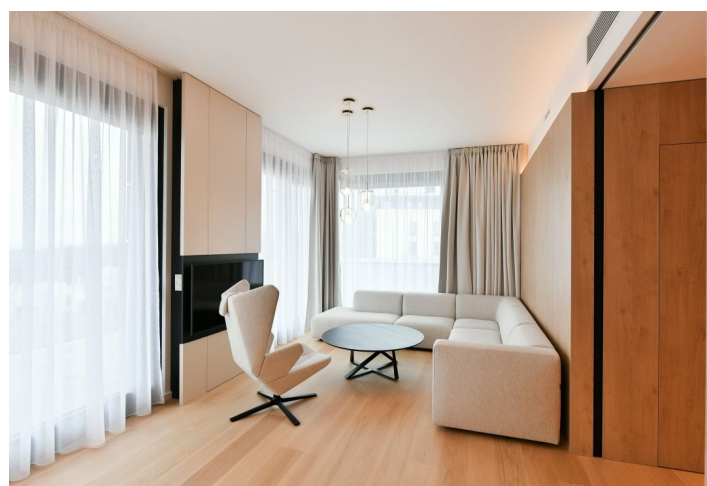
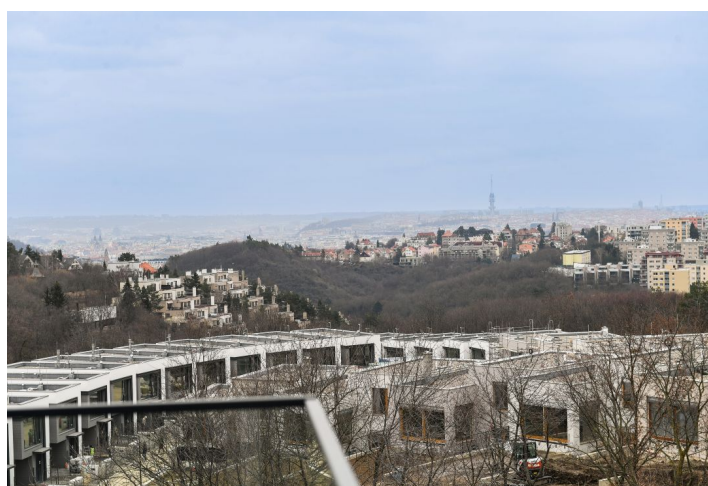
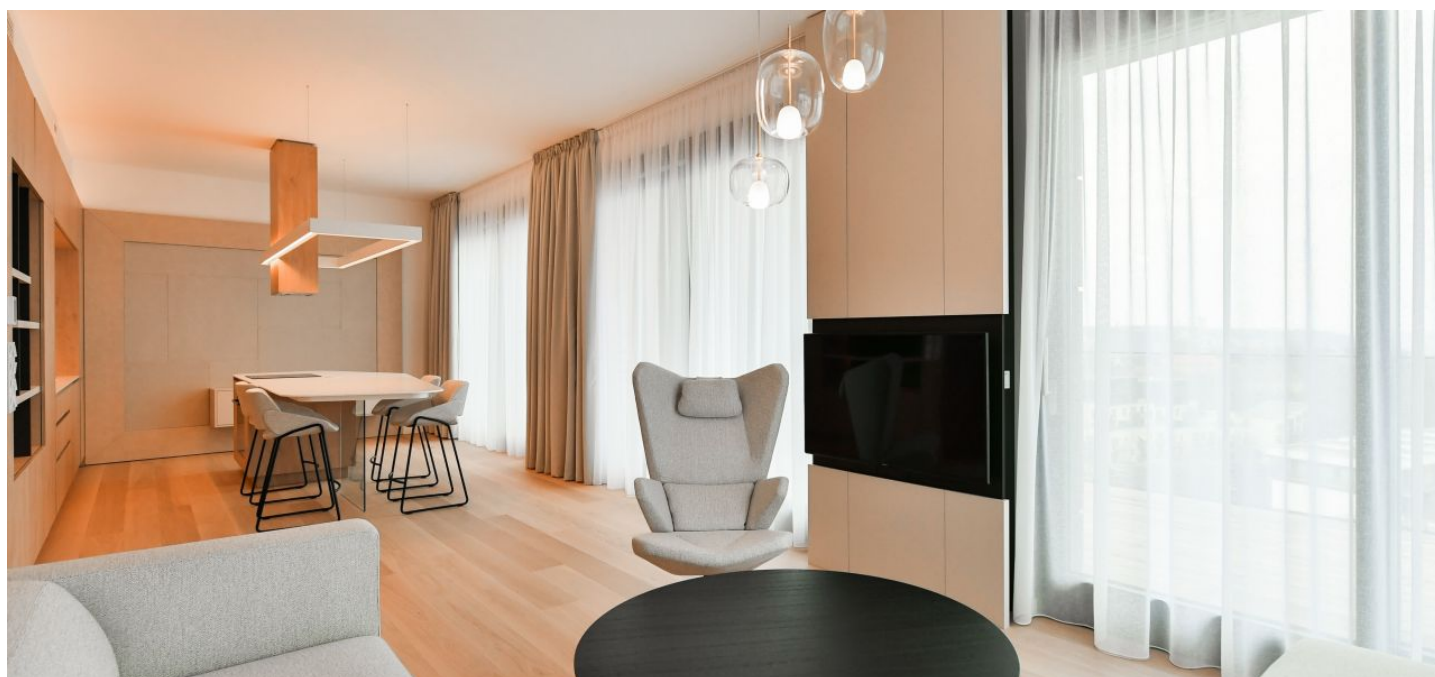




Apartment Two-bedroom (3+kk)

Rented

105.5 m², Prague 5, Košíře, Lerausova





Apartment Two-bedroom (3+kk)

Rented

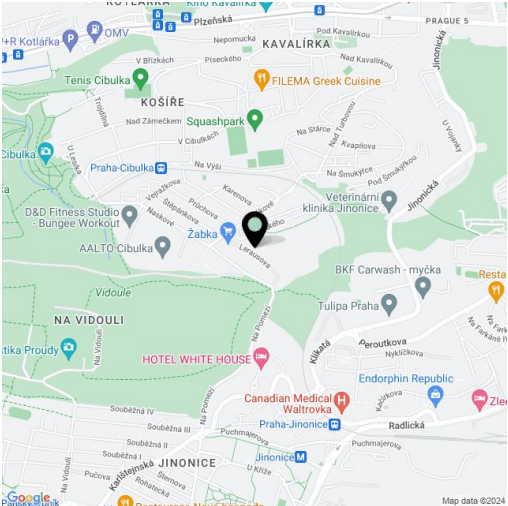
105.5 m², Prague 5, Košíře, Lerausova

Total area	154 m²
Floor area*	106 m²
Terrace	48 m²
Parking	Garage parking
Garage	Yes
Cellar	Yes
Service price	Monthly deposit for services, water, and heating approx. CZK 6,000. Electricity is billed separately.
Reference number	104348
Available from	Immediately

Benefiting from a large wraparound terrace and beautiful views of Prague, this completely furnished, designed by an architect apartment is situated on the 3rd topmost floor of a newly constructed building with an elevator, part of the Pomezí Top Residence. Located in a quiet residential neighborhood at the edge of the Cibulka forest park, close to the Vidoule nature preserve. Conveniently located for the Jinonice metro station, the Nový Smíchov/Anděl commercial center, and the German School, with full amenities in close vicinity. Within walking distance of the Prokopské Valley.

The high standard apartment features a living room with a fully fitted open plan kitchen and dining area, 2 bedrooms with built-in wardrobes, a bathroom with a bathtub, walk-in shower, and toilet, a utility room, a fitted **walk-in closet**, a guest toilet, and an entrance hall with built-in wardrobes. The **terrace** is accessible from all main rooms and from the bathroom.

Air-conditioning, oak floors, tiles, security entry door, custom-made furniture, automatic exterior blinds, central underfloor heating, Bosch kitchen appliances, dishwasher, induction stove top, two cellars. Two garage parking spaces are included.



* Area of the unit according to the Civil Code. The area consists of the sum total area of the entire unit bounded by perimeter walls.