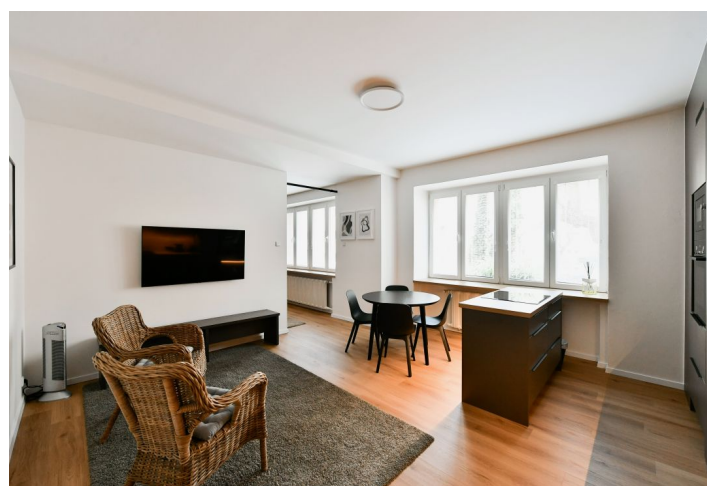
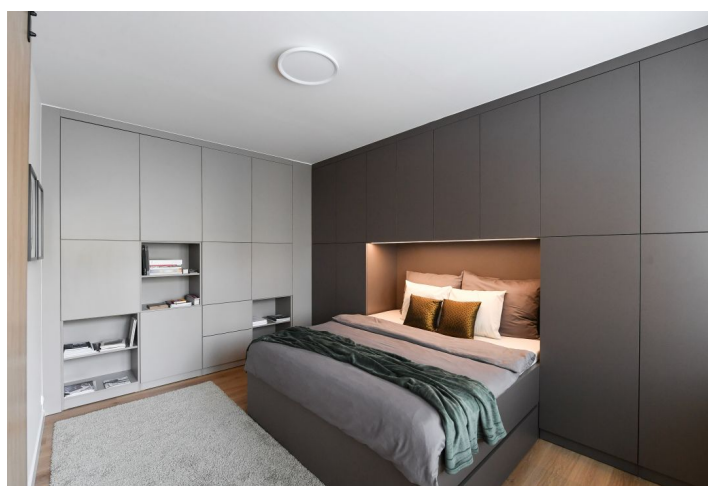
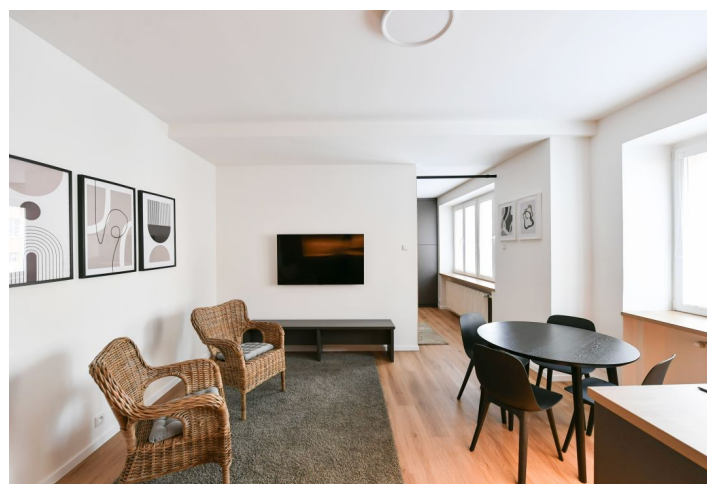
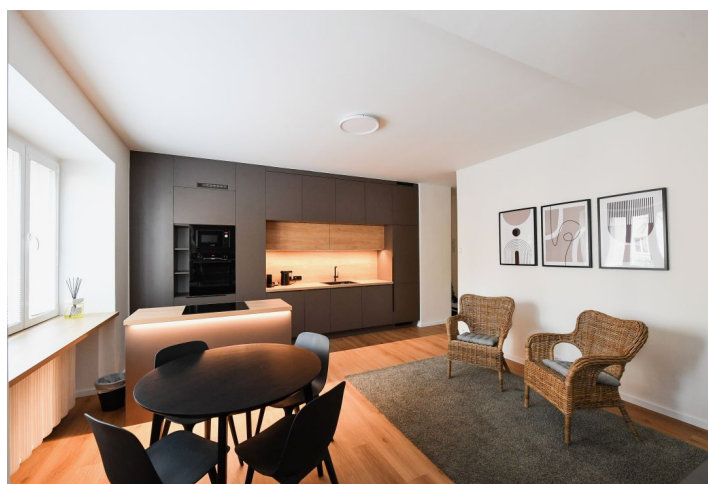
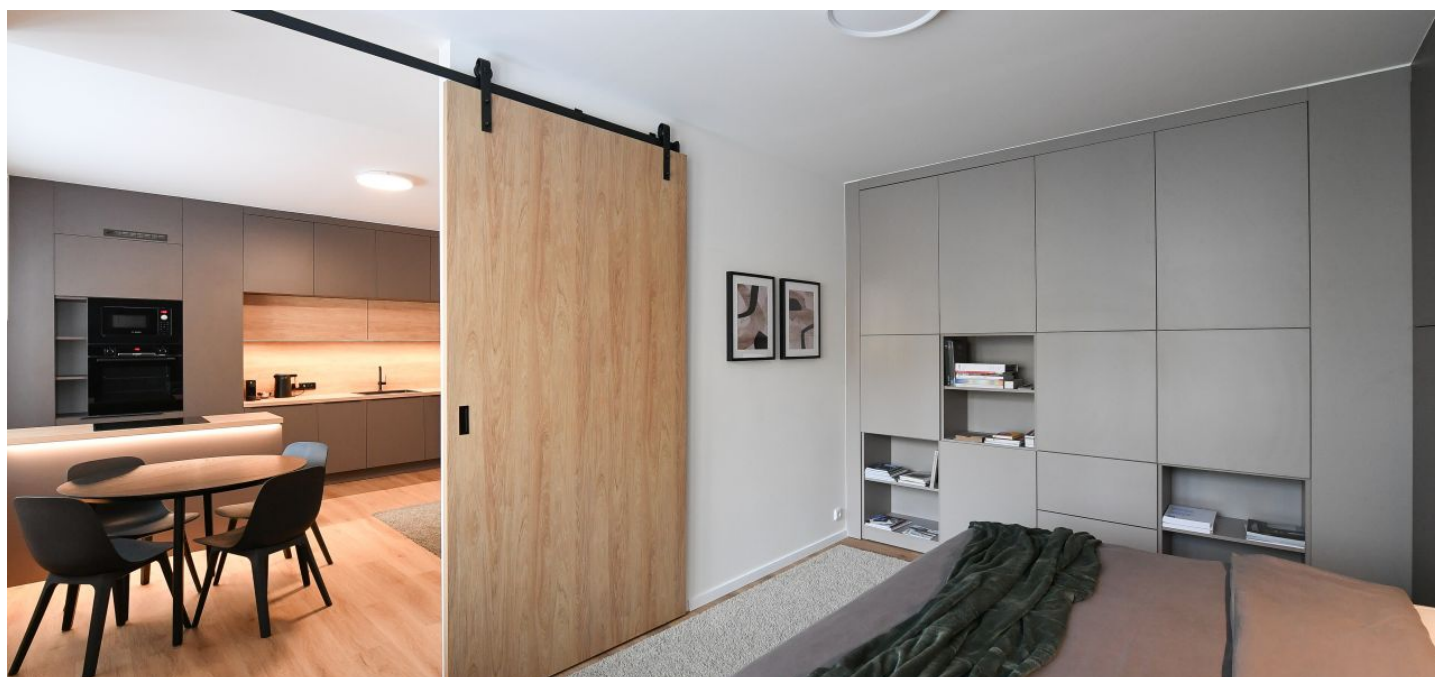




## Apartment One-bedroom (2+kk)

Rented

50 m<sup>2</sup>, Prague 6, Břevnov, Mládeže





# Apartment One-bedroom (2+kk)

Rented

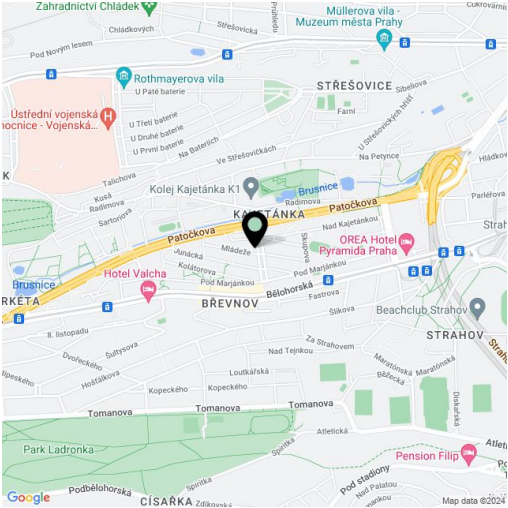
50 m², Prague 6, Břevnov, Mládeže

Total area	50 m²
Parking	-
Cellar	Yes
Service price	Monthly deposit for service charges, water and heating: CZK 4,500. Electricity is billed separately.
Reference number	104285
Available from	Immediately

This newly refurbished fully furnished apartment on the 1st floor of a completely renovated residential building with an elevator is situated on a quiet street surrounded by greenery, in Břevnov, Prague 6, within easy reach of the Prague Castle and Ladronka Park, with quick connections to the metro, city center, and airport. An area with complete amenities including schools, shops, sports facilities, and restaurants, conveniently located for international schools.

The apartment features a living room with a fully fitted open plan kitchen and dining area, a bedroom with built-in wardrobes and storage, a bathroom with a walk-in shower and a toilet, and an entrance hall.

Vinyl floors, tiles, new windows, blinds, central heating, washer/dryer, dishwasher, induction cooktop, microwave oven, TV, **cellar**. **Mid-term rental** is available at a higher rent.



\* Size of the unit according to the Housing Act.  
The area consists of the sum total of the internal area of every room.