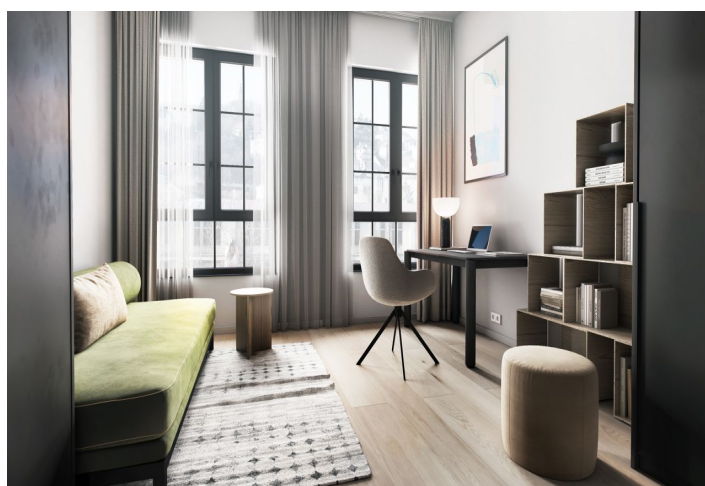
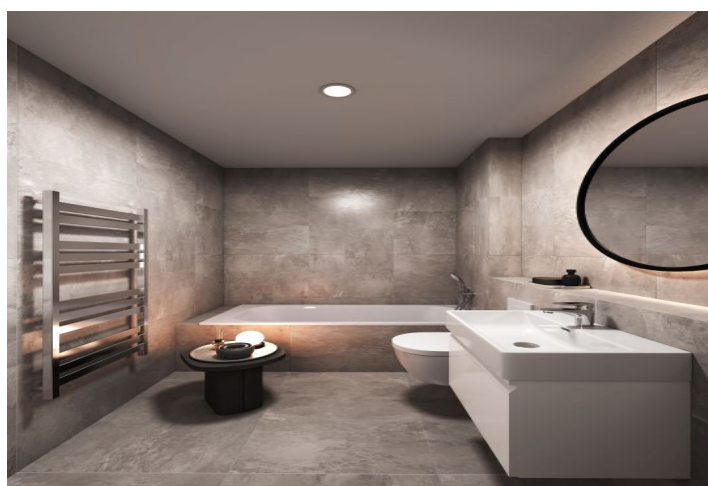




Apartment Four-bedroom (5+kk)

Rented

165.2 m², Prague 5, Smíchov, Nádražní





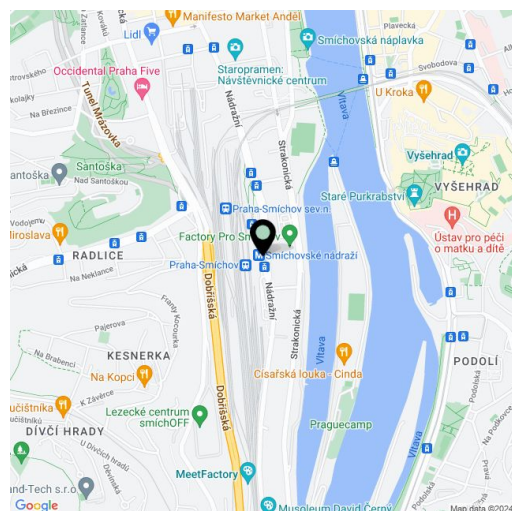
Apartment Four-bedroom (5+kk)

Rented

165.2 m², Prague 5, Smíchov, Nádraží

Total area	289 m²
Floor area*	165 m²
Terrace	122 m²
Loggia	2 m²
Parking	Garage parking
Garage	Yes
Cellar	Yes
Service price	Monthly deposit for services and utilities is billed separately.
PENB	B
Reference number	103788
Available from	Immediately

Brand new apartment in the newly emerging LIHOVAR residential neighborhood designed by the Black n'Arch studio. This completely furnished 2-bathroom apartment with a huge terrace and an enclosed balcony is situated on the 6th floor of a residential complex with underground parking and green roofs, in the new Smíchov Riverside area just steps from the left bank of the Vltava River, Císařská louka, Podolí, or the nearby Dívčí hrady and Děvín. Amenities that go above and beyond include a food market, a gym, the Czech Photo Gallery, David Černý's Musoleum art gallery, street art, and Křištof Kintera's Garden of Lights. Set within easy reach of good amenities, a kindergarten, primary and high schools, as well as numerous sports and outdoor activities - golf on Císařská louka, tennis and swimming in Podolí, and bike paths along the river. With great transport accessibility, the project is located a short tram stop from the Smíchovské nádraží metro station (line B), and has easy connections to the D1 highway to Brno, the D5 highway to Plzeň, and the Václav Havel airport.



The interior features a living room with a fully fitted open plan kitchen and dining area, three bedrooms, a study/fourth bedroom with access to the **enclosed balcony**, an en-suite bathroom with a walk-in shower and a toilet, a bathroom with a bathtub, a separate toilet, a utility room, and an entrance hall. The **terrace** is accessible from the living room and two bedrooms.

LOXONE smart home system, heat recovery ventilation, air-conditioning, vinyl floors, tiles, built-in wardrobes, central underfloor heating, washing machine, dishwasher, video entry phone, active Internet connection, camera system, elevator. A **garage parking** space is available at CZK 2,200/month + VAT. A **cellar** is available at an additional fee. Building amenities also include a **reception**, plus property management and on-site facility management services.

For more information, visit web site of the [Lihovar](#) project.

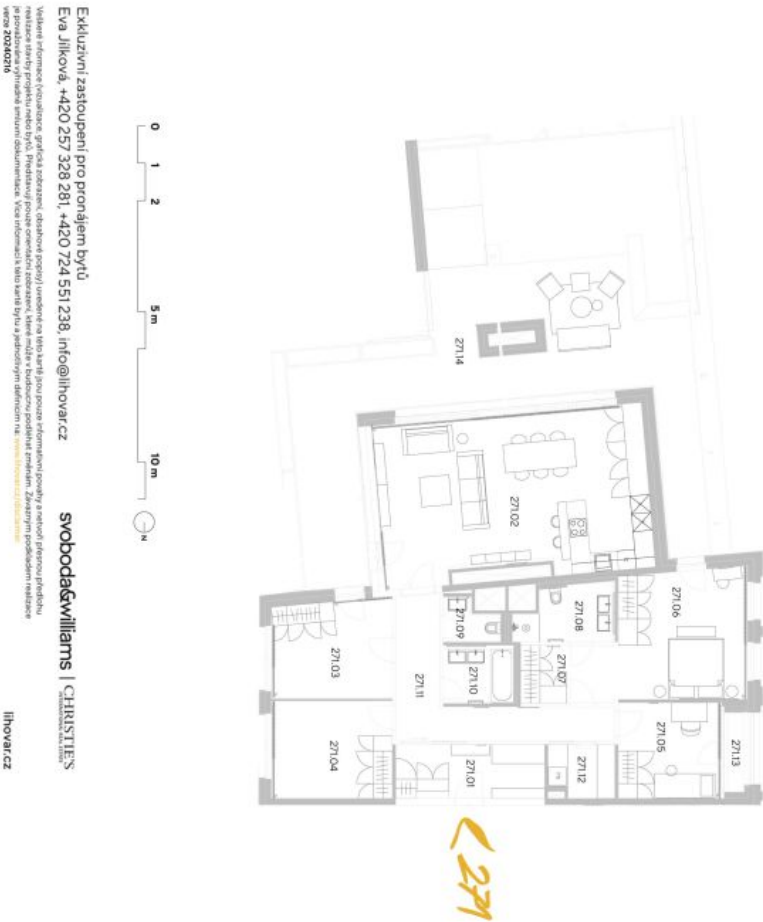
* Area of the unit according to the Civil Code. The area consists of the sum total area of the entire unit bounded by perimeter walls.



Apartment Four-bedroom (5+kk)

Rented

165.2 m², Prague 5, Smíchov, Nádražní

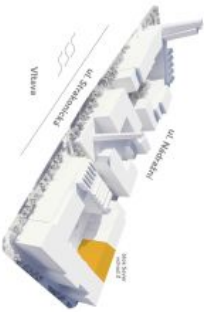


Exkluzivní zastoupení pro pronájem bytů
Eva Jilková, +420 257 328 281, +420 724 551 238, info@ihnovar.cz
svoboda&williams | CHRISTIE'S
IHNOVAR.CZ

Veškeré informace o nemovitosti, včetně podrobností o vybavení, jsou uvedeny v prohlášení o vlastnictví a v prohlášení o zastoupení. Pro více informací kontaktujte zástupce svoboda&williams | CHRISTIE'S.

byt 5+KK
165,20 m²
7.NP – JV

271



umístění na podlaží



úřadová

veřejná

průměrná plocha

část	rozloha (m²)
271.01	Základní
271.02	Podlaží s kuchyní/obývacím prostorem
271.03	Ložnice
271.04	Ložnice
271.05	Pracovna
271.06	Ložnice
271.07	Ložnice
271.08	Ložnice
271.09	WC
271.10	Koupelna
271.11	Koupelna
271.12	Komora
271.13	Komora
271.14	Komora
271.15	Komora
271.16	Komora
271.17	Komora
271.18	Komora
271.19	Komora
271.20	Komora
271.21	Komora
271.22	Komora
271.23	Komora
271.24	Komora
271.25	Komora
271.26	Komora
271.27	Komora
271.28	Komora
271.29	Komora
271.30	Komora
271.31	Komora
271.32	Komora
271.33	Komora
271.34	Komora
271.35	Komora
271.36	Komora
271.37	Komora
271.38	Komora
271.39	Komora
271.40	Komora
271.41	Komora
271.42	Komora
271.43	Komora
271.44	Komora
271.45	Komora
271.46	Komora
271.47	Komora
271.48	Komora
271.49	Komora
271.50	Komora
271.51	Komora
271.52	Komora
271.53	Komora
271.54	Komora
271.55	Komora
271.56	Komora
271.57	Komora
271.58	Komora
271.59	Komora
271.60	Komora
271.61	Komora
271.62	Komora
271.63	Komora
271.64	Komora
271.65	Komora
271.66	Komora
271.67	Komora
271.68	Komora
271.69	Komora
271.70	Komora
271.71	Komora
271.72	Komora
271.73	Komora
271.74	Komora
271.75	Komora
271.76	Komora
271.77	Komora
271.78	Komora
271.79	Komora
271.80	Komora
271.81	Komora
271.82	Komora
271.83	Komora
271.84	Komora
271.85	Komora
271.86	Komora
271.87	Komora
271.88	Komora
271.89	Komora
271.90	Komora
271.91	Komora
271.92	Komora
271.93	Komora
271.94	Komora
271.95	Komora
271.96	Komora
271.97	Komora
271.98	Komora
271.99	Komora
271.100	Komora

