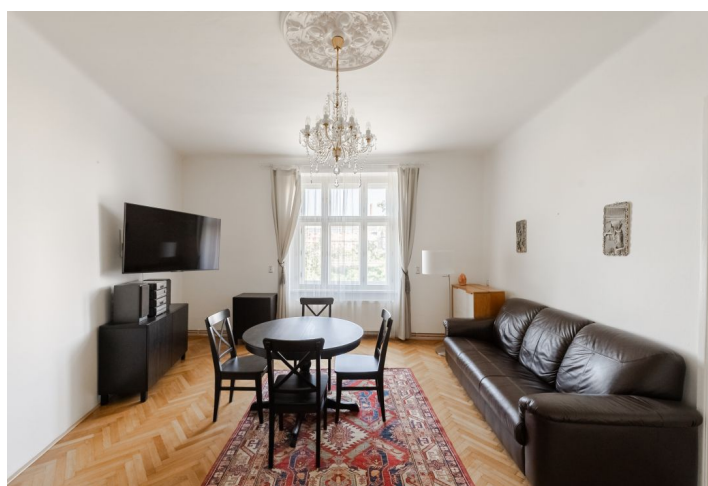
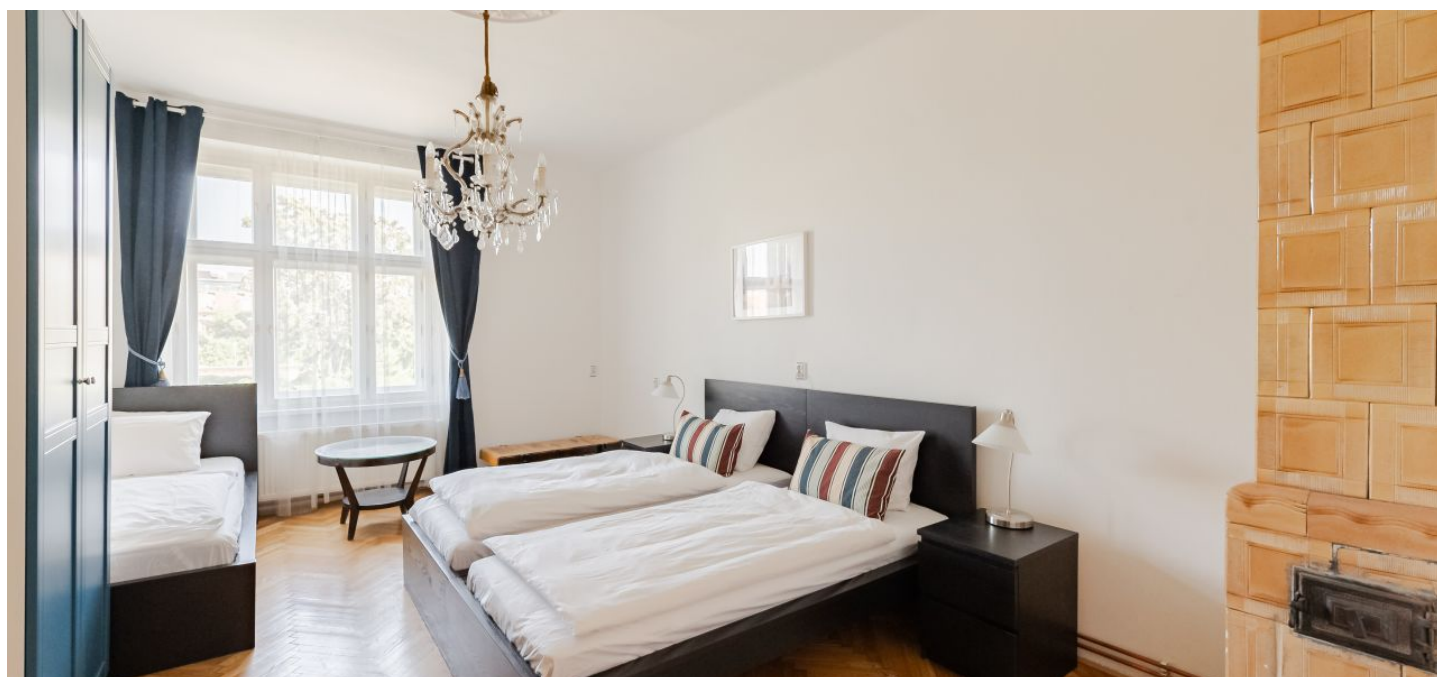




Apartment Two-bedroom (3+1)

120 m², Prague 5, Smíchov, Pod trať

Rented





Apartment Two-bedroom (3+1)

Rented

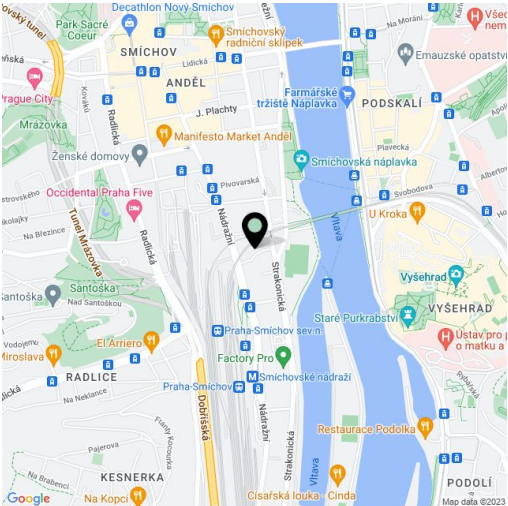
120 m², Prague 5, Smíchov, Pod trať

Total area	121 m²
Floor area*	120 m²
Balcony	1 m²
Parking	-
Cellar	-
Service price	Monthly deposit for services and water: CZK 3.000 for 3 persons Gas and electricity will be transferred to the tenant.
Reference number	102413
Available from	Immediately

This furnished apartment with a balcony is on the second floor of a well-maintained residential building with an elevator, a few blocks from the Anděl and Smíchovské nádraží metro stations, and the Nový Smíchov commercial and entertainment center. Located near the Vltava riverbank and a newly arising district with a pedestrian zone, within easy reach of the French School, and the Smíchov and Výtoň embankments. Close to a fitness and wellness center, and a golf and tennis club (several minutes).

The interior features a living room, a fully fitted eat-in kitchen, 2 bedrooms, a shower room, a separate toilet, a storage room, and an entrance hall with a small balcony facing the courtyard.

Hardwood floors, tiles, gas boiler, washing machine, dishwasher, microwave oven, video entry phone, security cameras in the building. Mid-term rental is available at a higher rent.



* Size of the unit according to the Housing Act.
The area consists of the sum total of the internal area of every room.