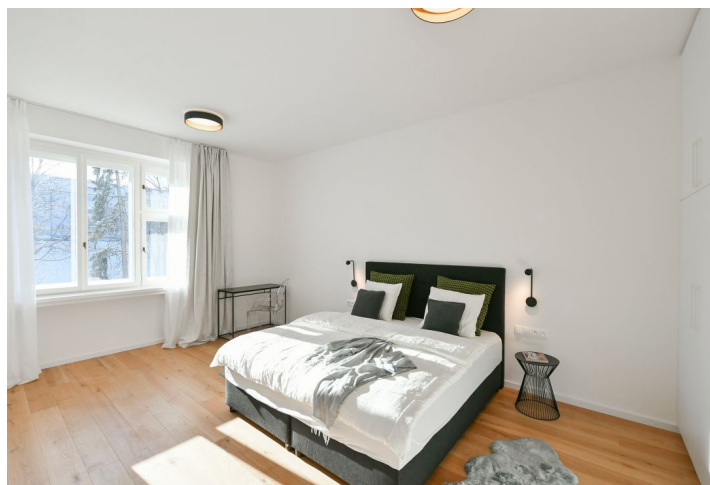




## Apartment One-bedroom (2+kk)

Rented

64.25 m², Prague 6, Dejvice, Mydlářka





## Apartment One-bedroom (2+kk)

**Rented**

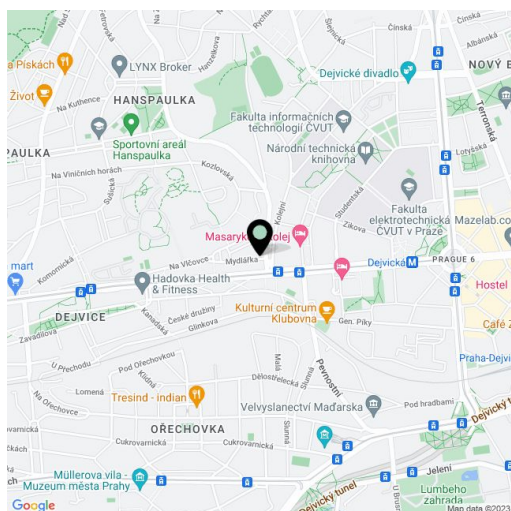
64.25 m², Prague 6, Dejvice, Mydlářka

Total area	64 m²
Parking	-
Cellar	Yes
Service price	Monthly deposit for services, water, and heating 3,000. Electricity is billed separately.
PENB	C
Reference number	102231
Available from	Immediately

This fully refurbished, furnished apartment is on the 1st floor of a newly renovated building with an elevator on the edge of the prestigious residential area of Hanspaulka, Prague 6. A great location just minutes from the Czech Technical University campus and Dejvická metro station with very quick access to the city center and full amenities in the area. The apartment is also conveniently located for the airport and numerous international schools.

The interior features a living room with a fully fitted open plan kitchen, a bedroom, a bathroom (walk-in shower, toilet), and an entrance hall.

**Oak and terrazo floors, casement windows, built-in wardrobes, heat pump, underfloor heating, good insulation, dishwasher, cellar.**



\* Area of the unit according to the Civil Code. The area consists of the sum total area of the entire unit bounded by perimeter walls.