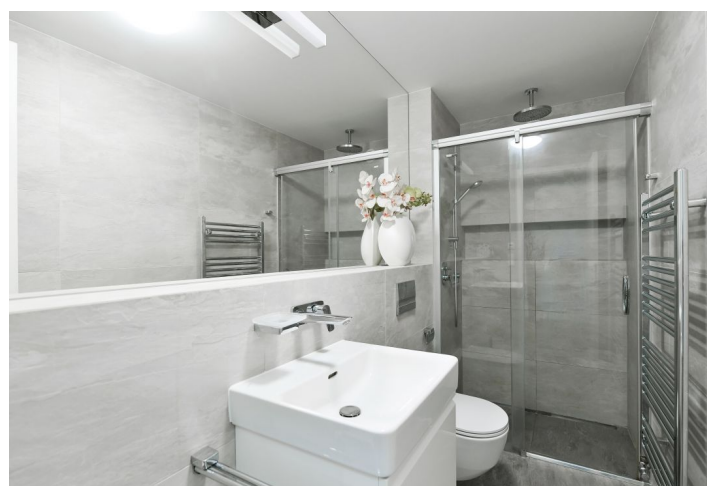
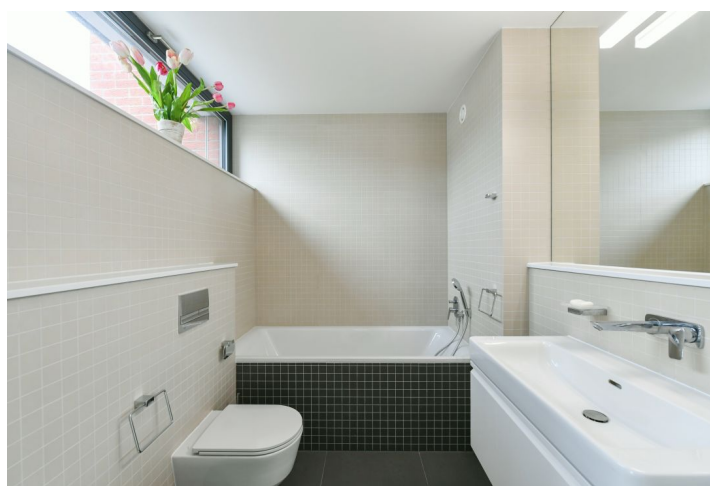




House Four-bedroom (5+kk)

230 m², Prague 6, Dejvice, V Šáreckém údolí

Rented





House Four-bedroom (5+kk)

Rented

230 m², Prague 6, Dejvice, V Šáreckém údolí

Usable area	230 m²
Plot	203 m²
Foot print	95 m²
Garden	108 m²
Floor area	173 m²
Balcony	2 m²
Terrace	12 m²
Parking	Double garage.
Garage	43 m²
Cellar	Yes
Service price	Monthly deposit for services and garbage removal: CZK 9,000. Water, gas, and electricity are billed separately.
PENB	B
Reference number	101943
Available from	Immediately

This unfurnished townhouse with 3 bathrooms is part of the **TOP RESIDENCE** project with interiors designed by the Olgoj Chorchoj studio, situated in the charming Šárecké Valley surrounded by green hills and peaceful nature. A location with good connections to the city center, the airport, and international schools in Prague 6, convenient to the Dejvická metro station with full amenities in the area. Mere steps to the Global Concept Montessori School, five min. to the ISP School.

The ground floor includes a living room with a fully fitted open plan kitchen and access to the **terrace/garden**, a study/guest bedroom, a bathroom (walk-in shower, toilet), and an entrance hall. The first floor features a master bedroom with an en-suite bathroom (bathtub, bidet, toilet), two bedrooms with a shared **balcony** facing the garden, a fitted **walk-in closet**, a bathroom (walk-in shower, toilet), and a hall. There is a basement floor offering a guest bedroom/playroom/gym with access to the garden, a laundry room, storage space, and garage access.

Heat recovery ventilation, hardwood floors, tiles, French windows, automatic exterior blinds, gas boiler, washer, dryer, Siemens and Bosch appliances, dishwasher, induction cooktop, steam oven, microwave oven, HUSKY central vacuum cleaner. A **double garage** is available. **Reception** and **24/7 security**, social club and a children's playground. Many hiking and bike paths in the area. Available from July 2023 (or earlier).

