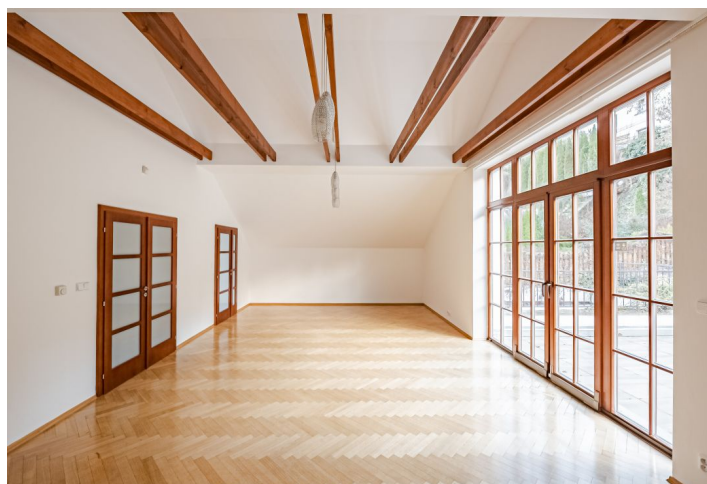




Apartment Four-bedroom (5+1)

Rented

179.5 m², Prague 6, Střešovice, Nad hradním vodojemem





Apartment Four-bedroom (5+1)

Rented

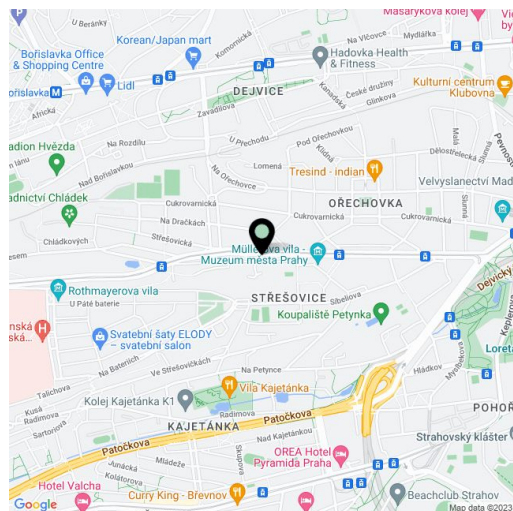
179.5 m², Prague 6, Střešovice, Nad hradním vodojemem

| | |
|------------------|---|
| Total area | 220 m² |
| Floor area* | 180 m² |
| Terrace | 40 m² |
| Garden | 100 m² |
| Parking | Double garage. |
| Garage | Yes |
| Cellar | - |
| Service price | Monthly deposit for service charges and utilities in the amount of CZK 15,000 is billed separately. |
| Reference number | 100642 |
| Available from | Immediately |

Benefiting from a prestigious location near the Park Lane international school, this first floor renovated 4-bedroom 2-bathroom apartment with a large terrace and a garden is part of a building that stands in a quiet residential location in close vicinity to the Prague Castle and convenient to the airport and several international schools (ISP, Riverside School). A location with easy access to the city center, just a few tram stops to the Dejvická and Hradčanská metro stations with full amenities and services in the area. There is a tram stop just a minutes' walk away.

The entrance to the apartment is on the ground floor of the building through an entrance hall with wardrobes. A staircase leads up to the first floor, where there is a spacious living room with access to the **terrace/garden**, a new fully fitted kitchen, a master bedroom with an en-suite bathroom (walk-in shower, toilet), two bedrooms, and a study/guest bedroom. There is a family bathroom (bathtub, walk-in shower, bidet, toilet), and a hallway with wardrobes.

Hardwood parquet floors, tiles, built-in wardrobes in two bedrooms, heat pump, underfloor heating, washing machine, dryer, dishwasher, microwave oven, alarm, security cameras. No elevator. A **double garage** is included. Available from January 1st, 2023.



* Area of the unit according to the Civil Code. The area consists of the sum total area of the entire unit bounded by perimeter walls.