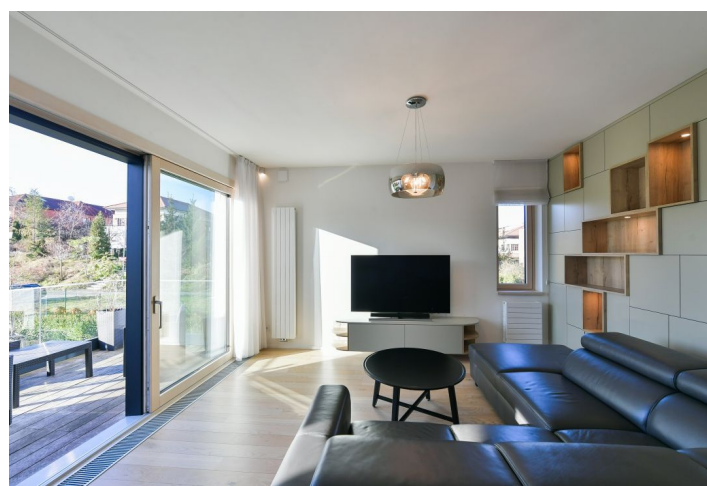
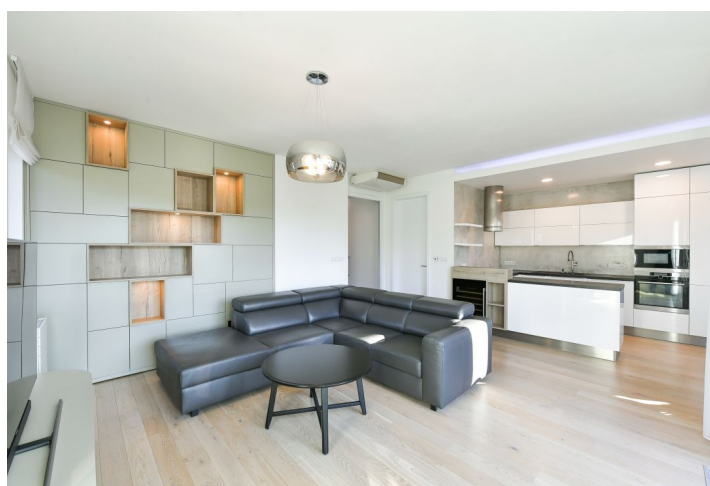
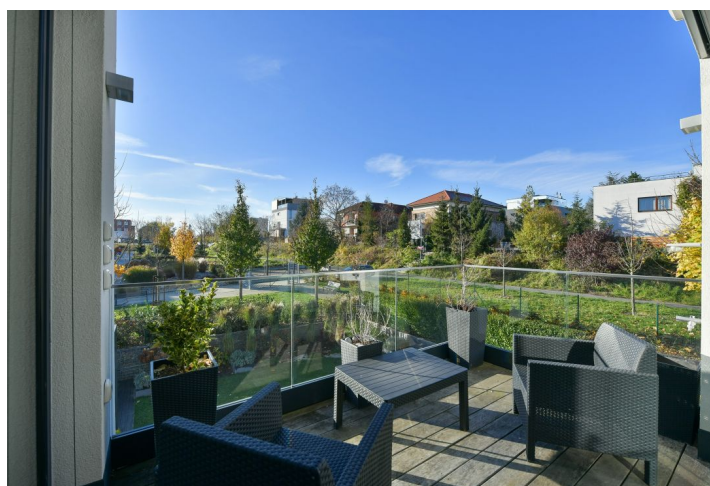




Apartment Two-bedroom (3+kk)

Rented

97.3 m², Prague 6, Břevnov, Radičova





Apartment Two-bedroom (3+kk)

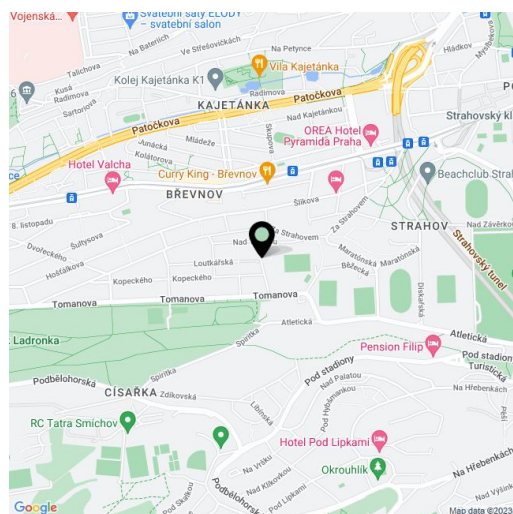
Rented97.3 m², Prague 6, Břevnov, Radičova

Total area	107 m ²
Floor area*	97 m ²
Terrace	9 m ²
Parking	Two garage parking spaces.
Garage	Yes
Cellar	Yes
Service price	Monthly deposit for service charges, water, heating, electricity consumption and internet CZK 10,000.
PENB	B
Reference number	100341
Available from	Immediately

Benefiting from a wonderful location and a south facing terrace, this high standard semi furnished 2-bedroom apartment is situated on the first floor of the modern gated La Crone residential project with a 24/7 reception, security, and underground parking, in a prestigious residential area in Prague 6. An attractive quiet location in close vicinity of the Strahov Stadium, the Prague Castle, and the popular Ladronka Park with many sports and relaxation opportunities and quick connections to the city center (tram, bus - about ten min. to Hradčanská and Anděl metro stations). Conveniently located for the airport and international schools in Prague 6, with a bus stop right next to the residence.

The interior features a living room with a fully fitted open plan kitchen and terrace access, 2 bedrooms - one with a built-in wardrobe, a bathroom with a bathtub and a walk-in shower, a toilet with a bidet shower, a utility / storage room, and an entrance hall with a built-in wardrobe.

High standard materials, air-conditioning, smart home system, hardwood floors, tiles, security entry door, automatic exterior blinds, awning, washing machine, dishwasher, induction cooktop, steam oven, microwave oven, wine fridge, video entry phone, 15,5 m² cellar, private fitness room for residents, guest parking. Two garage parking spaces are included.



* Area of the unit according to the Civil Code. The area consists of the sum total area of the entire unit bounded by perimeter walls.