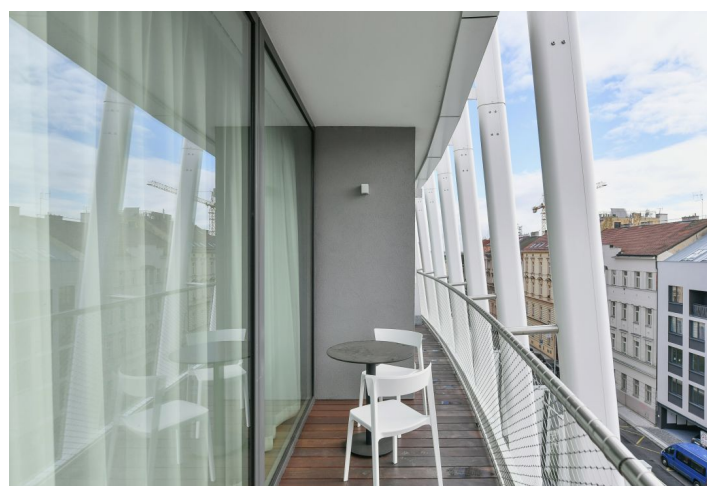
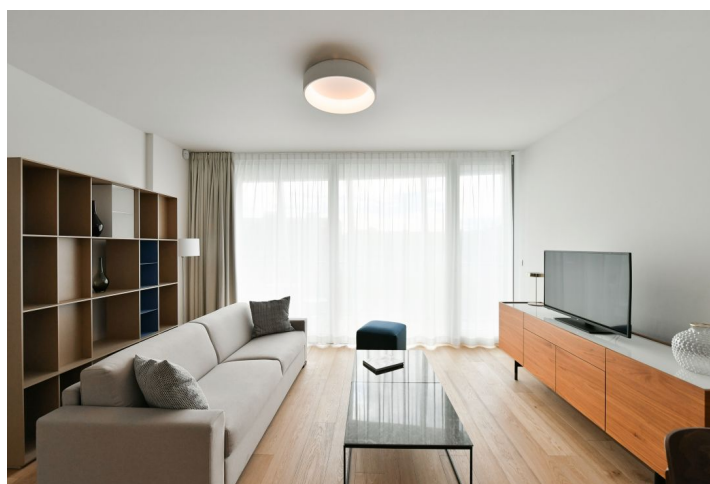
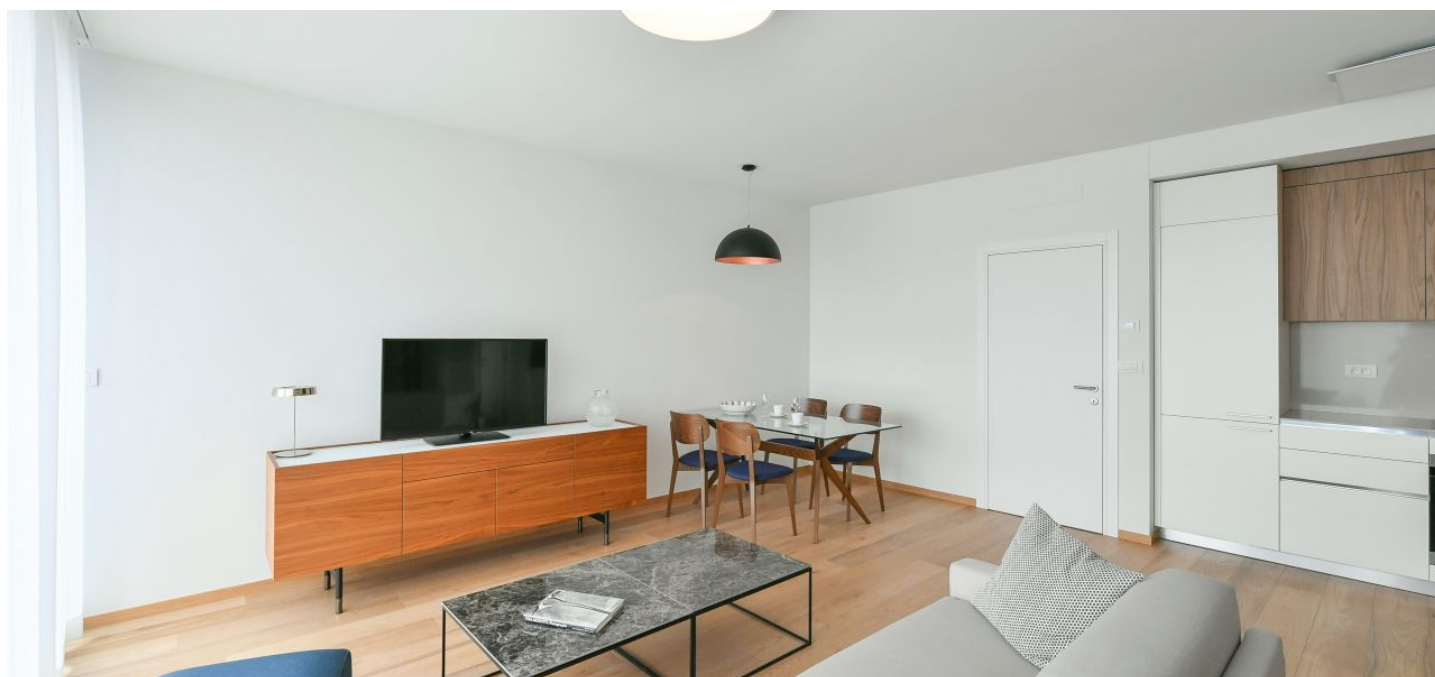




## Apartment One-bedroom (2+kk)

€ 2 200 | CZK 54 362

62 m², Prague 5, Smíchov, Holečkova





# Apartment One-bedroom (2+kk)

€ 2 200 | CZK 54 362

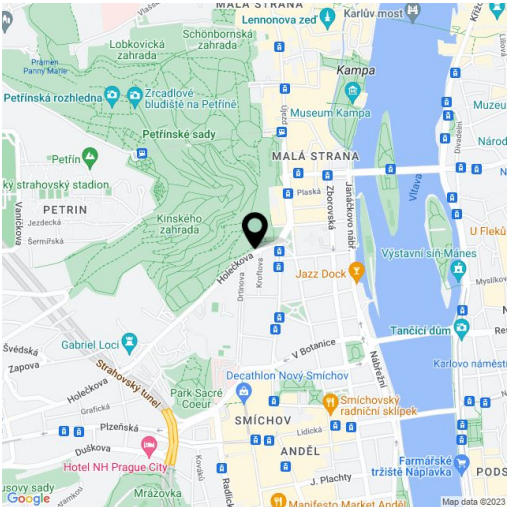
62 m², Prague 5, Smíchov, Holečkova

Total area	71 m²
Floor area*	62 m²
Terrace	9 m²
Parking	Garage parking.
Garage	Yes
Cellar	-
Service price	Service charges, utilities, and Internet are included in the rent. The fee for wellness EUR 100/month.
PENB	B
Reference number	40759
Available from	Immediately

Boasting a terrace and charming green views, this brand new high standard fully furnished 1-bedroom apartment is on the second floor of the new Ellipsis building with a reception, security, wellness, fitness (Prisma institut), a large terraced garden, and parking. Located in the attractive Hřebenka residential neighborhood near Kinský Garden and Petřín Hill park, within easy reach of the French School and the Anděl/Nový Smíchov commercial and entertainment center. The location also offers regular bus connections and quick access to the city center and the airport.

The interior features a living room with a fully fitted open plan kitchen and dining area, a bedroom, a bathroom, an additional separate toilet, and an entrance hall. The **terrace** is accessible from both main rooms.

Heat recovery ventilation, hardwood floors, tiles, built-in wardrobes, underfloor heating, sofabed, washer/dryer, dishwasher, induction cooktop, microwave oven, kitchenware, bed linen, towels, TV, video entry phone, alarm, Internet (included), charging station for electric cars in the garage. **Garage parking** is available at EUR 200 + VAT/space/month.



\* Size of the unit according to the Housing Act.  
The area consists of the sum total of the internal area of every room.