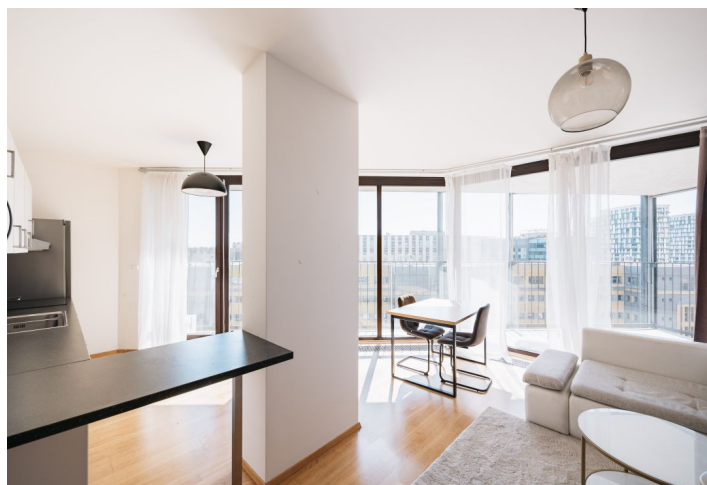




Apartment One-bedroom (2+kk)

€ 1 497 | CZK 37 000

71 m², Prague 3, Žižkov, Pitterova





Apartment One-bedroom (2+kk)

€ 1 497 | CZK 37 000

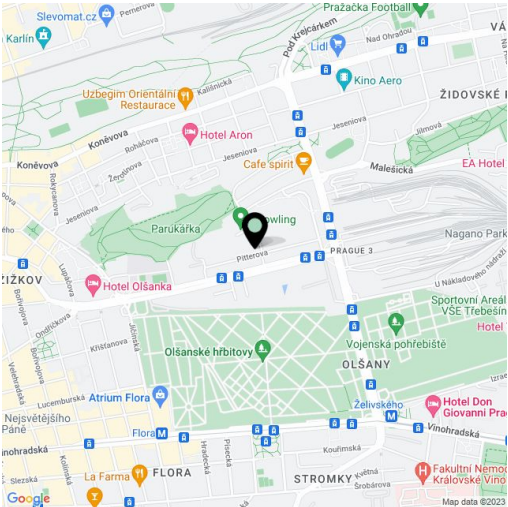
71 m², Prague 3, Žižkov, Pitterova

| | |
|------------------|---|
| Total area | 92 m ² |
| Floor area* | 71 m ² |
| Terrace | 22 m ² |
| Parking | Garage parking. |
| Garage | Yes |
| Cellar | Yes |
| Service price | Monthly deposit for services, water ,and heating: CZK 6,200. Electricity - transferred to the tenant. |
| PENB | C |
| Reference number | 38859 |
| Available from | 01.06.2024 |

This partly furnished, southwest-facing apartment with a 22 m² terrace offering views of a large park and the city is on the 7th floor of a contemporary gated residential project with a private park, 24/7 reception and security, underground parking, and camera system. Located in the immediate vicinity of Parukářka Park, with full amenities and services within easy reach (Olšanská clinic, post office, sports facilities, and shopping) and quick access to the city center (multiple tram lines, Želivského metro station).

The sunny interior features a living room with a fully fitted open plan kitchen and dining area, a bedroom, a bathroom with a bathtub and toilet, a utility room, and an entrance hall with storage. Both main rooms offer access to the terrace.

Air-conditioning, hardwood floors, large-format tiles, floor-to-ceiling triple-glazed aluminum windows with automatic exterior blinds, security entry door, central heating, washer, dishwasher, microwave oven, large cellar, chip entry to the building. A garage parking space is included.



* Size of the unit according to the Housing Act.
The area consists of the sum total of the internal area of every room.